



University of  
New Hampshire

# THE GRANITE STATE POLL

November 6, 2016

## CLOSE RACE IN CD1, KUSTER LIKELY WINNER IN CD2

By: Andrew E. Smith, Ph.D.  
Zachary S. Azem, M.A.  
UNH Survey Center

andrew.smith@unh.edu  
603-862-2226  
www.unh.edu/survey-center

DURHAM, NH – Congressman Frank Guinta and former Congresswoman Carol Shea-Porter are in a close race in New Hampshire’s First Congressional District. Second District Congresswoman Ann Kuster holds a wide lead over Republican challenger Jim Lawrence. Democrats are positioned to gain control of the New Hampshire State House and State Senate.

These findings are based on the latest **Granite State Poll**,\* conducted by the University of New Hampshire Survey Center. Seven hundred and seven (707) randomly selected New Hampshire likely voters were interviewed by landline and cellular telephone between November 3 and November 6, 2016. The margin of sampling error for the survey is +/- 3.7 percent. Included were subsamples of 349 likely voters from the First Congressional District (+/- 5.2% MSE) and 358 likely voters from the Second Congressional District (+/- 5.3% MSE).

### Shea-Porter vs. Guinta vs. O’Connor – 1<sup>st</sup> District

The Congressional election in New Hampshire’s 1<sup>st</sup> District is the fourth consecutive time that Frank Guinta and Carol Shea-Porter have faced off, but Independent candidate Shawn O’Connor has added a new dynamic to the race. In the final UNH pre-election poll, 41% of likely voters will vote for Shea-Porter, 30% will vote for Guinta, 15% will vote for O’Connor, and 13% are undecided. When undecided voters were asked which way they are leaning, the percentages become 42% for Shea-Porter, 33% for Guinta, 16% for O’Connor, and 9% are undecided.

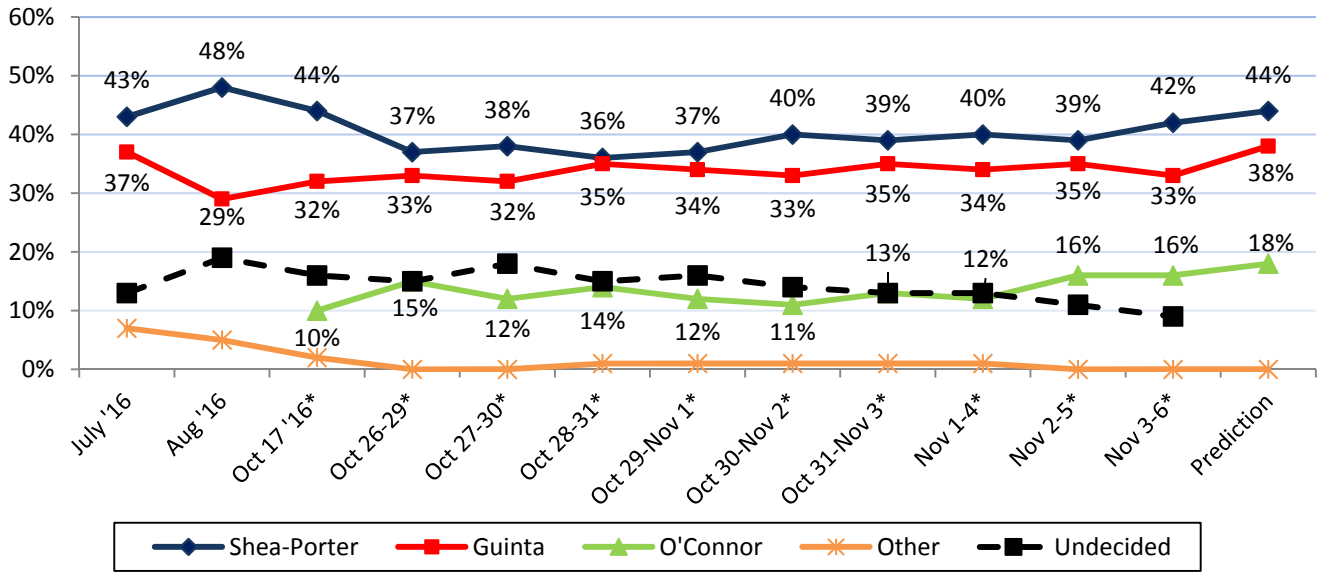
When undecided voters are allocated to the candidate they are most likely to vote for, the final prediction is 44% for Shea-Porter, 38% for Guinta, and 18% for O’Connor.

Shea-Porter is doing somewhat better among Core Democrats (85%) than Guinta is among Core Republicans (74%) while swing voters are divided between the three (33% for Shea-Porter, 30% for O’Connor and 21% for Guinta).

---

\* We ask that this copyrighted information be referred to as *the Granite State Poll* conducted by the University of New Hampshire Survey Center.

**Vote For US Congress - 1st District**  
 \* Including Undecided but leaning voters



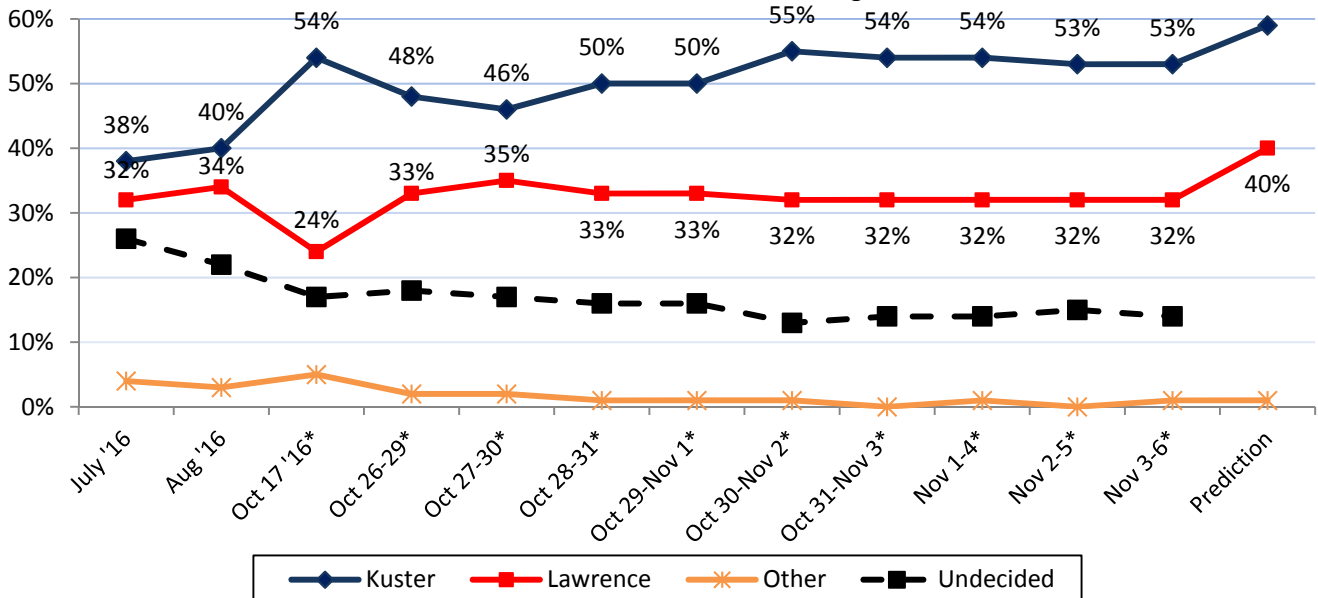
**Kuster vs. Lawrence – 2<sup>nd</sup> District**

In New Hampshire’s Second District, 53% of 2<sup>nd</sup> District likely voters say they would vote for incumbent Ann Kuster, 30% would vote for former state representative Jim Lawrence, 1% would vote for someone else, and 16% are undecided. When undecided voters are asked which way they are leaning the percentages become 53% for Kuster, 32% for Lawrence, 1% for someone else, and 14% are undecided.

When undecided voters are allocated to the candidate they are most likely to vote for, the final prediction is 59% for Kuster, 40% for Lawrence, and 1% for other candidates.

Kuster does better among Core Democratic Voters (91%-1%) than Lawrence does among Core Republicans (82%-3%), while swing voters favor Kuster (42%-26%).

**US Congress District 2 - Kuster vs. Lawrence**  
 \* Includes Undecided But Leaning Voters

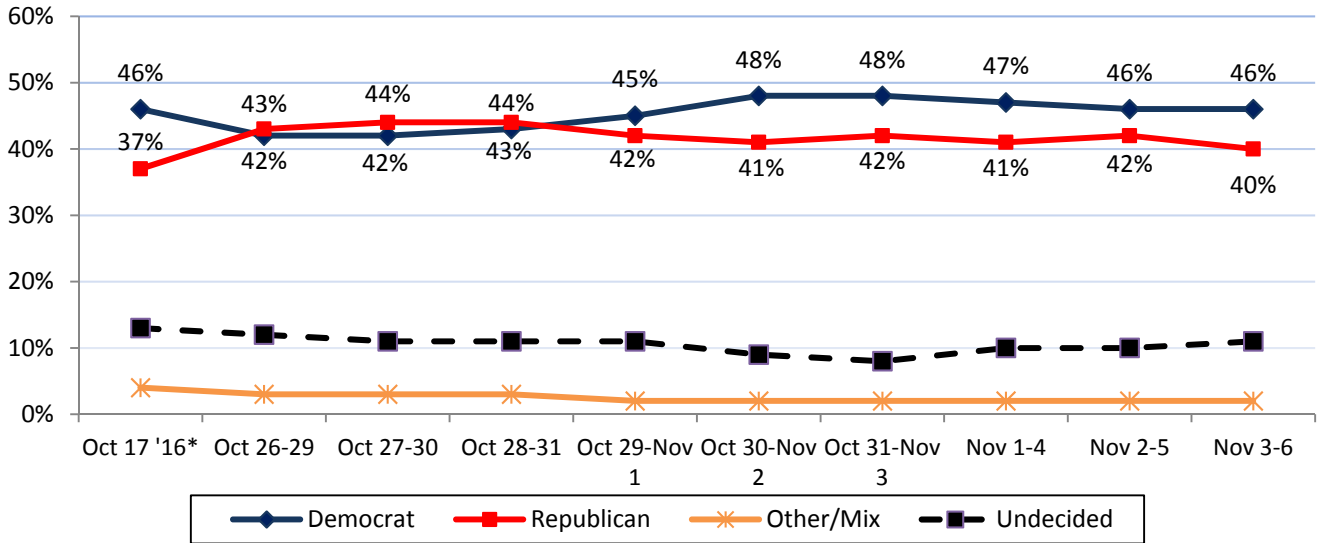


### New Hampshire House of Representatives

Likely voters were asked which party's candidate they planned on supporting in the upcoming election for the New Hampshire House of Representatives. Currently, 45% say they will vote for Democratic candidates, 39% support Republican candidates, 1% support another party or a mix of Republicans and Democrats, and 14% undecided. When undecided voters were asked which way they were leaning, the results become 46% for Democratic candidates, 40% for Republican candidates, 2% for another party or a mix of Republicans and Democrats, and 11% are still undecided.

Based on an evaluation of past "generic ballot" polling in New Hampshire and actual election results, these findings translate into 207 seats for Democrats and 193 seats for Republicans.

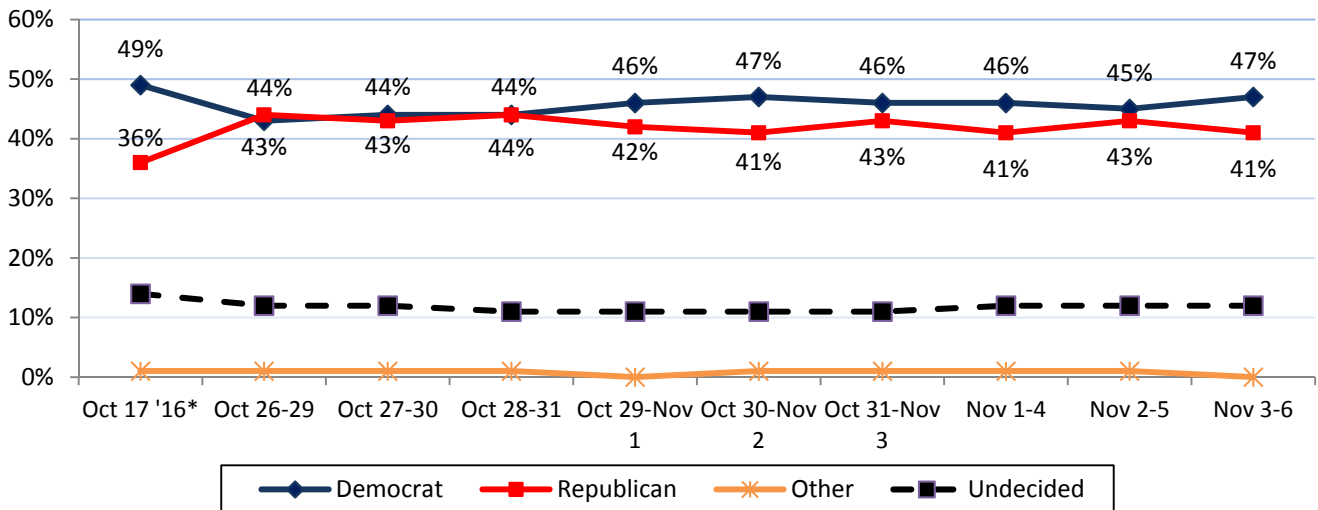
**New Hampshire House of Representatives Generic Ballot - With Leaners**



Currently 46% support Democratic candidates for the State Senate, 40% support Republican candidates, and 13% undecided. When undecided voters were asked which way they were leaning, the percentages become 47% for Democratic candidates, 41% for Republican candidates, 0% for another party, and 12% are still undecided.

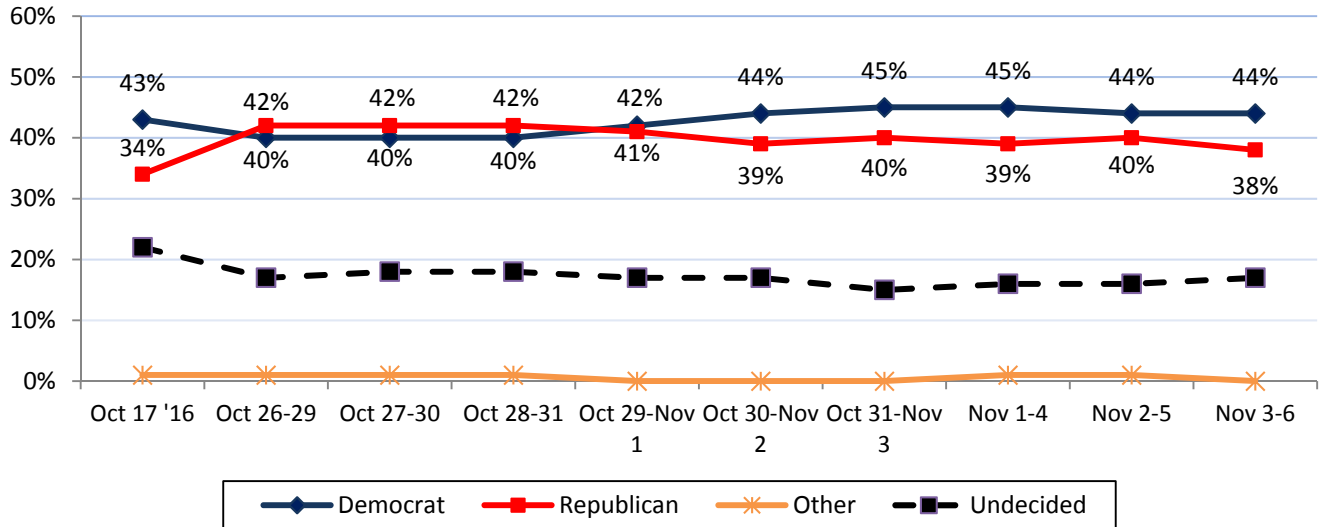
Based on an evaluation of past "generic ballot" polling in New Hampshire and actual election results, these findings translate into 12 seats for Democrats and 12 seats for Republicans.

**New Hampshire State Senate Generic Ballot - With Leaners**

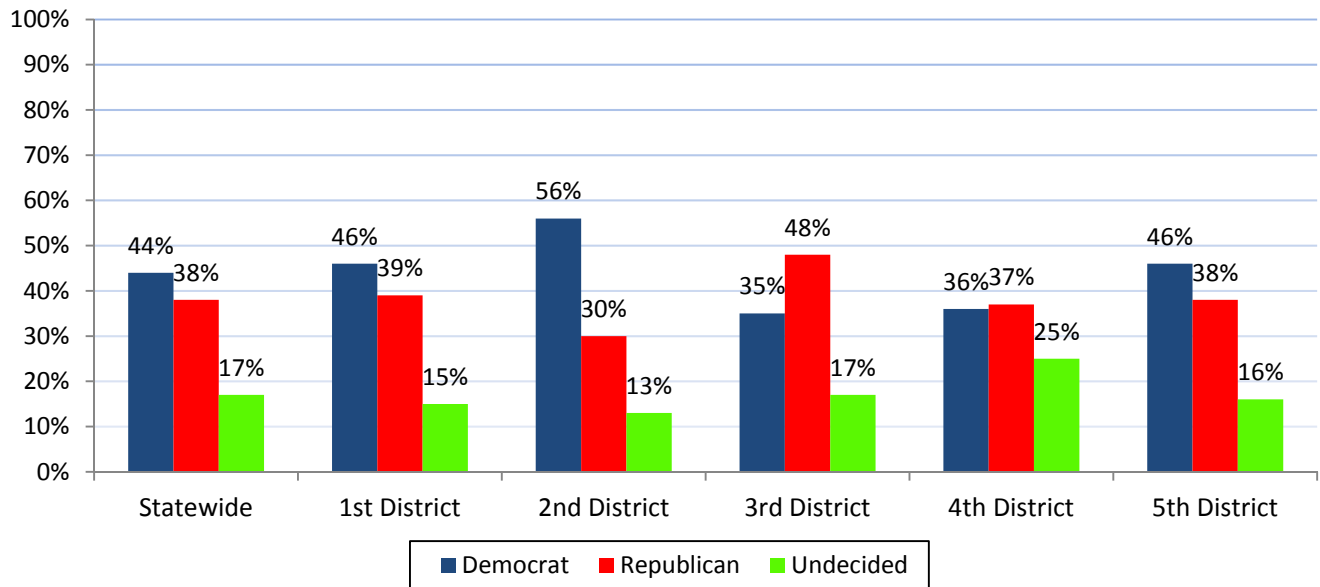


Currently 43% of likely voters would support the Democratic candidate for Executive Council, 37% would support the Republican candidate, and 20% are undecided. When undecided voters were asked which way they were leaning, the results become 44% for Democratic candidates, 38% for Democratic candidates, 0% for another party, and 17% are still undecided. Democrats are likely to take 2<sup>nd</sup> District and lead in the 1<sup>st</sup> and 5<sup>th</sup> districts. Republicans are in position to take the 3<sup>rd</sup> District while the 4<sup>th</sup> District is tied.

**New Hampshire Executive Council Generic Ballot - With Leaners**



**Executive Council Vote With Leaners**



## Granite State Poll Methodology

These findings are based on the latest Granite State Poll, conducted by the University of New Hampshire Survey Center. Seven hundred and seven (707) randomly selected New Hampshire likely voters were interviewed by landline and cellular telephone between November 3 and November 6, 2016. If a household included more than one adult, the adult who had the most recent birthday was selected to be interviewed.

The margin of sampling error for the survey is +/- 3.7 percent. Included were subsamples of 349 likely voters from the First Congressional District (+/- 5.2% MSE) and 346 likely voters from the Second Congressional District (+/- 5.3% MSE). These MSE's have not been adjusted for design effect. The design effect for the survey is 1.1%.

The random sample used in the Granite State Poll was purchased from Marketing Systems Group (MSG), Horsham, PA. MSG screens each selected telephone number to eliminate non-working numbers, disconnected numbers, and business numbers to improve the efficiency of the sample, reducing the amount of time interviewers spend calling non-usable numbers.

The data have been weighted to adjust for numbers of adults and telephone lines within households. Additionally, data were weighted by respondent sex, age, and region of the state to targets from the most recent American Community Survey (ACS) conducted by the U.S. Census Bureau. In addition to potential sampling error, all surveys have other potential sources of non-sampling error including question order effects, question wording effects, and non-response. Due to rounding, percentages may not sum to 100%. The number of respondents in each demographic below may not equal the number reported in cross-tabulation tables as some respondents choose not to answer some questions.

For more information about the methodology used in the Granite State Poll, contact Dr. Andrew Smith at (603) 862-2226 or by email at [andrew.smith@unh.edu](mailto:andrew.smith@unh.edu).

### Granite State Poll, November 6 2016 - Likely Voter Demographics

<b>Sex</b>	<b>N</b>	<b>%</b>	<b>Region</b>	<b>N</b>	<b>%</b>
Male	<b>339</b>	<b>48%</b>	North Country	<b>55</b>	<b>8%</b>
Female	<b>368</b>	<b>52%</b>	Central/Lakes	<b>118</b>	<b>17%</b>
			Connecticut Valley	<b>112</b>	<b>16%</b>
<b>Age</b>	<b>N</b>	<b>%</b>	Mass Border	<b>186</b>	<b>26%</b>
18 to 34	<b>163</b>	<b>24%</b>	Seacoast	<b>113</b>	<b>16%</b>
35 to 49	<b>170</b>	<b>25%</b>	Manchester Area	<b>122</b>	<b>17%</b>
50 to 64	<b>218</b>	<b>32%</b>			
65 and Over	<b>132</b>	<b>19%</b>	<b>Party Registration</b>	<b>N</b>	<b>%</b>
			Democrat	<b>220</b>	<b>31%</b>
<b>Highest Level of Education</b>	<b>N</b>	<b>%</b>	Undeclared/Not Reg.	<b>272</b>	<b>39%</b>
High School or Less	<b>103</b>	<b>15%</b>	Republican	<b>212</b>	<b>30%</b>
Some College	<b>162</b>	<b>23%</b>			
College Graduate	<b>261</b>	<b>38%</b>	<b>Party Identification</b>	<b>N</b>	<b>%</b>
Post-Graduate	<b>167</b>	<b>24%</b>	Democrat	<b>298</b>	<b>43%</b>
			Independent	<b>111</b>	<b>16%</b>
			Republican	<b>277</b>	<b>40%</b>

**Granite State Poll, November 6 2016 – First Congressional District Likely Voters Demographics**

<b>Sex</b>	<b>N</b>	<b>%</b>	<b>Region</b>	<b>N</b>	<b>%</b>
Male	<b>167</b>	<b>48%</b>	North Country	<b>24</b>	<b>7%</b>
Female	<b>182</b>	<b>52%</b>	Central/Lakes	<b>47</b>	<b>14%</b>
			Connecticut Valley	<b>0</b>	<b>0%</b>
			Mass Border	<b>62</b>	<b>18%</b>
			Seacoast	<b>113</b>	<b>32%</b>
			Manchester Area	<b>103</b>	<b>30%</b>
<b>Age</b>	<b>N</b>	<b>%</b>	<b>Party Registration</b>	<b>N</b>	<b>%</b>
18 to 34	<b>92</b>	<b>27%</b>	Democrat	<b>107</b>	<b>31%</b>
35 to 49	<b>95</b>	<b>28%</b>	Undeclared/Not Reg.	<b>129</b>	<b>37%</b>
50 to 64	<b>98</b>	<b>29%</b>	Republican	<b>111</b>	<b>32%</b>
65 and Over	<b>53</b>	<b>16%</b>			
<b>Highest Level of Education</b>	<b>N</b>	<b>%</b>	<b>Party Identification</b>	<b>N</b>	<b>%</b>
High School or Less	<b>53</b>	<b>15%</b>	Democrat	<b>141</b>	<b>41%</b>
Some College	<b>82</b>	<b>24%</b>	Independent	<b>51</b>	<b>15%</b>
College Graduate	<b>128</b>	<b>37%</b>	Republican	<b>148</b>	<b>44%</b>
Post-Graduate	<b>80</b>	<b>23%</b>			

**Granite State Poll, November 6 2016 – Second Congressional District Likely Voter Demographics**

<b>Sex</b>	<b>N</b>	<b>%</b>	<b>Region</b>	<b>N</b>	<b>%</b>
Male	<b>172</b>	<b>48%</b>	North Country	<b>32</b>	<b>9%</b>
Female	<b>186</b>	<b>52%</b>	Central/Lakes	<b>71</b>	<b>20%</b>
			Connecticut Valley	<b>112</b>	<b>31%</b>
			Mass Border	<b>124</b>	<b>35%</b>
			Seacoast	<b>0</b>	<b>0%</b>
			Manchester Area	<b>19</b>	<b>5%</b>
<b>Age</b>	<b>N</b>	<b>%</b>	<b>Party Registration</b>	<b>N</b>	<b>%</b>
18 to 34	<b>72</b>	<b>21%</b>	Democrat	<b>113</b>	<b>32%</b>
35 to 49	<b>75</b>	<b>22%</b>	Undeclared/Not Reg.	<b>143</b>	<b>40%</b>
50 to 64	<b>120</b>	<b>35%</b>	Republican	<b>101</b>	<b>28%</b>
65 and Over	<b>79</b>	<b>23%</b>			
<b>Highest Level of Education</b>	<b>N</b>	<b>%</b>	<b>Party Identification</b>	<b>N</b>	<b>%</b>
High School or Less	<b>51</b>	<b>14%</b>	Democrat	<b>157</b>	<b>45%</b>
Some College	<b>80</b>	<b>23%</b>	Independent	<b>61</b>	<b>18%</b>
College Graduate	<b>133</b>	<b>38%</b>	Republican	<b>129</b>	<b>37%</b>
Post-Graduate	<b>87</b>	<b>25%</b>			

**US Congress 1<sup>st</sup> District – Guinta vs. Shea-Porter vs. O’Connor – Likely Voters**

“Thinking about the US Congress election, will you vote for Frank Guinta, the Republican ... Carol Shea-Porter, the Democrat... Shawn O’Connor, the Independent... some other candidate .... or will you skip this election?” ROTATE CANDIDATES

	<u>July '16</u>	<u>Aug '16</u>	<u>Oct 17 '16</u>	<u>Oct 26-29</u>	<u>Oct 27-30</u>	<u>Oct 28-31</u>	<u>Oct 29-Nov 1</u>	<u>Oct 30-Nov 2</u>	<u>Oct 31-Nov 3</u>	<u>Nov 1-4</u>	<u>Nov 2-5</u>	<u>Nov 3-6</u>
Guinta	37%	29%	29%	31%	29%	31%	31%	29%	30%	30%	31%	<b>30%</b>
Shea-Porter	43%	48%	43%	34%	35%	33%	36%	40%	39%	39%	38%	<b>41%</b>
O’Connor			10%	13%	11%	12%	10%	9%	11%	11%	14%	<b>15%</b>
Other	7%	5%	2%	0%	0%	1%	1%	1%	1%	1%	0%	<b>0%</b>
Undecided	13%	19%	16%	22%	25%	23%	22%	21%	20%	19%	16%	<b>13%</b>
(N=)	(196)	(185)	(344)	(240)	(204)	(231)	(223)	(219)	(252)	(282)	(309)	(323)

**US Congress 1<sup>st</sup> District – Guinta vs. Shea-Porter vs. O’Connor – Likely Voters – With Leaners**

“Would you say you are leaning towards Frank Guinta, the Republican ... Carol Shea-Porter, the Democrat... or Shawn O’Connor, the Independent?” ROTATE CANDIDATES

	<u>Oct 17 '16</u>	<u>Oct 26-29</u>	<u>Oct 27-30</u>	<u>Oct 28-31</u>	<u>Oct 29-Nov 1</u>	<u>Oct 30-Nov 2</u>	<u>Oct 31-Nov 3</u>	<u>Nov 1-4</u>	<u>Nov 2-5</u>	<u>Nov 3-6</u>	<u>Prediction</u>
Guinta	32%	33%	32%	35%	34%	33%	35%	34%	35%	<b>33%</b>	<b>38%</b>
Shea-Porter	44%	37%	38%	36%	37%	40%	39%	40%	39%	<b>42%</b>	<b>44%</b>
O’Connor	10%	15%	12%	14%	12%	11%	13%	12%	16%	<b>16%</b>	<b>18%</b>
Other	2%	0%	0%	1%	1%	1%	1%	1%	0%	<b>0%</b>	<b>0%</b>
Undecided	12%	15%	18%	15%	16%	14%	13%	13%	11%	<b>9%</b>	
(N=)	(344)	(239)	(204)	(231)	(223)	(219)	(252)	(282)	(309)	<b>(323)</b>	

**US Congress 2<sup>nd</sup> District – Lawrence vs. Kuster – Likely Voters**

“Thinking about the US Congress election, will you vote for Jim Lawrence, the Republican... Ann Kuster, the Democrat... some other candidate .... or will you skip this election?” ROTATE CANDIDATES

	<u>July '16</u>	<u>Aug '16</u>	<u>Oct 17 '16</u>	<u>Oct 26-29</u>	<u>Oct 27-30</u>	<u>Oct 28-31</u>	<u>Oct 29-Nov 1</u>	<u>Oct 30-Nov 2</u>	<u>Oct 31-Nov 3</u>	<u>Nov 1-4</u>	<u>Nov 2-5</u>	<u>Nov 3-6</u>
Lawrence	32%	34%	23%	29%	32%	30%	32%	31%	31%	31%	31%	<b>30%</b>
Kuster	38%	40%	51%	45%	44%	46%	47%	49%	50%	51%	52%	<b>53%</b>
Other	4%	3%	5%	2%	2%	1%	1%	0%	0%	1%	0%	<b>1%</b>
Undecided	26%	22%	21%	24%	23%	23%	21%	20%	19%	17%	17%	<b>16%</b>
(N=)	(230)	(188)	(334)	(237)	(222)	(247)	(221)	(221)	(234)	(265)	(290)	<b>(322)</b>

**US Congress 2<sup>nd</sup> District – Lawrence vs. Kuster – Likely Voters – With Leaners**

“Would you say you are leaning towards Jim Lawrence, the Republican ... or Ann Kuster, the Democrat?” ROTATE CANDIDATES

	<u>Oct 17 '16</u>	<u>Oct 26-29</u>	<u>Oct 27-30</u>	<u>Oct 28-31</u>	<u>Oct 29-Nov 1</u>	<u>Oct 30-Nov 2</u>	<u>Oct 31-Nov 3</u>	<u>Nov 1-4</u>	<u>Nov 2-5</u>	<u>Nov 3-6</u>	<u>Prediction</u>
Lawrence	24%	33%	35%	33%	33%	32%	32%	32%	32%	<b>32%</b>	<b>40%</b>
Kuster	54%	48%	46%	50%	50%	55%	54%	54%	53%	<b>53%</b>	<b>59%</b>
Other	5%	2%	2%	1%	1%	1%	0%	1%	0%	<b>1%</b>	<b>1%</b>
Undecided	17%	18%	17%	16%	16%	13%	14%	14%	15%	<b>14%</b>	
(N=)	(334)	(237)	(222)	(247)	(221)	(221)	(234)	(265)	(290)	<b>(322)</b>	

**Generic NH House Ballot**

"Please think about the November election for your representative to the New Hampshire House of Representatives. Do you plan to vote for the Republican or Democratic candidate for the New Hampshire House of Representatives ... or do you plan to skip the election for New Hampshire House of Representatives this time?" ROTATE PARTIES

	<u>Oct. 17</u> <u>'16</u>	<u>Oct.</u> <u>26-29</u>	<u>Oct</u> <u>27-30</u>	<u>Oct</u> <u>28-31</u>	<u>Oct 29-</u> <u>Nov 1</u>	<u>Oct 30-</u> <u>Nov 2</u>	<u>Oct 31-</u> <u>Nov 3</u>	<u>Nov</u> <u>1-4</u>	<u>Nov</u> <u>2-5</u>	<u>Nov</u> <u>3-6</u>
<b>Republican</b>	35%	40%	42%	42%	40%	39%	41%	39%	40%	<b>39%</b>
<b>Democrat</b>	43%	40%	40%	41%	43%	46%	46%	46%	45%	<b>45%</b>
<b>Other</b>	1%	1%	1%	1%	1%	1%	0%	0%	1%	<b>1%</b>
<b>Mix</b>	3%	2%	2%	2%	1%	1%	1%	1%	1%	<b>0%</b>
<b>Undecided</b>	17%	17%	16%	15%	14%	13%	12%	13%	14%	<b>14%</b>
<b>(N=)</b>	(709)	(501)	(451)	(496)	(453)	(451)	(497)	(563)	(618)	<b>(665)</b>

**With Leaners**

"Are you leaning toward voting for the Republican candidate to the New Hampshire House or for the Democratic candidate?" ROTATE PARTIES

	<u>Oct. 17</u> <u>'16</u>	<u>Oct.</u> <u>26-29</u>	<u>Oct</u> <u>27-30</u>	<u>Oct</u> <u>28-31</u>	<u>Oct 29-</u> <u>Nov 1</u>	<u>Oct 30-</u> <u>Nov 2</u>	<u>Oct 31-</u> <u>Nov 3</u>	<u>Nov</u> <u>1-4</u>	<u>Nov</u> <u>2-5</u>	<u>Nov</u> <u>3-6</u>
<b>Republican</b>	37%	43%	44%	44%	42%	41%	42%	41%	42%	<b>40%</b>
<b>Democrat</b>	46%	42%	42%	43%	45%	48%	48%	47%	46%	<b>46%</b>
<b>Other</b>	1%	1%	1%	1%	1%	1%	1%	1%	1%	<b>1%</b>
<b>Mix</b>	3%	2%	2%	2%	1%	1%	1%	1%	1%	<b>1%</b>
<b>Undecided</b>	13%	12%	11%	11%	11%	9%	8%	10%	10%	<b>11%</b>
<b>(N=)</b>	(709)	(501)	(451)	(496)	(453)	(451)	(497)	(563)	(618)	<b>(665)</b>

**Generic NH Senate Ballot**

"Please think about the November election for your representative to the New Hampshire Senate. Do you plan to vote for the Republican or Democratic candidate for the New Hampshire Senate ... or do you plan to skip the election for New Hampshire Senate this time?" ROTATE PARTIES

	<u>Oct. 17</u> <u>'16</u>	<u>Oct.</u> <u>26-29</u>	<u>Oct</u> <u>27-30</u>	<u>Oct</u> <u>28-31</u>	<u>Oct 29-</u> <u>Nov 1</u>	<u>Oct 30-</u> <u>Nov 2</u>	<u>Oct 31-</u> <u>Nov 3</u>	<u>Nov</u> <u>1-4</u>	<u>Nov</u> <u>2-5</u>	<u>Nov</u> <u>3-6</u>
<b>Republican</b>	34%	43%	42%	43%	41%	40%	42%	40%	41%	<b>40%</b>
<b>Democrat</b>	47%	41%	41%	41%	43%	45%	44%	45%	44%	<b>46%</b>
<b>Other</b>	1%	1%	1%	1%	0%	1%	1%	1%	1%	<b>0%</b>
<b>Undecided</b>	17%	16%	16%	16%	15%	14%	13%	14%	14%	<b>13%</b>
<b>(N=)</b>	(716)	(508)	(457)	(506)	(465)	(462)	(506)	(575)	(633)	<b>(678)</b>

**With Leaners**

"Are you leaning toward voting for the Republican candidate to the New Hampshire Senate or for the Democratic candidate?" ROTATE PARTIES

	<u>Oct.</u> <u>17 '16</u>	<u>Oct.</u> <u>26-29</u>	<u>Oct</u> <u>27-30</u>	<u>Oct</u> <u>28-31</u>	<u>Oct 29-</u> <u>Nov 1</u>	<u>Oct 30-</u> <u>Nov 2</u>	<u>Oct 31-</u> <u>Nov 3</u>	<u>Nov</u> <u>1-4</u>	<u>Nov</u> <u>2-5</u>	<u>Nov</u> <u>3-6</u>
<b>Republican</b>	36%	44%	43%	44%	42%	41%	43%	41%	43%	<b>41%</b>
<b>Democrat</b>	49%	43%	44%	44%	46%	47%	46%	46%	45%	<b>47%</b>
<b>Other</b>	1%	1%	1%	1%	0%	1%	1%	1%	1%	<b>0%</b>
<b>DK/Undecided</b>	14%	12%	12%	11%	11%	11%	11%	12%	12%	<b>12%</b>
<b>(N=)</b>	(715)	(508)	(457)	(506)	(465)	(462)	(506)	(575)	(633)	<b>(678)</b>



A historical analysis was done looking at the results of the “generic ballot” question and the actual number of seats won by Republicans in the New Hampshire House and Senate in the 2000 through 2014 elections was presented at the annual meeting of the American Association for Public Opinion Research Annual (AAPOR), and is available from the UNH Survey Center.

The model developed in this paper used for estimating House seats from the generic ballot question is:  
 $HOUSE\ SEATS = -262.692 + (2\text{-party}\ GOP\ estimate * 980.486)$

In this Granite State Poll, the two party estimate of House vote percentage with leaners for Republicans, 46.5% (40% GOP / (40% GOP + 46% DEM) = 46.5%) is calculated and inserted into the formula above. This results in an estimate of 207 Democratic House seats and 193 Republican House seats.

The model developed for estimating Senate seats from the generic ballot question is:  
 $SENATE\ SEATS = -19.438 + (2\text{-party}\ GOP\ estimate * 66.577)$

In this Granite State Poll, the two party estimate of Senate vote percentage with leaners for Republicans, 46.5% (41% GOP / (41% GOP + 47% DEM) = 46.5%) is calculated and inserted into the formula above. This results in an estimate of 12 Republican Senate seats and 12 Democratic Senate seats.

### Generic NH Executive Council Ballot

“And in the election for the Executive Council, do you plan to vote for the Democratic or Republican candidate for the New Hampshire Executive Council ... or do you plan to skip the election for Executive Council this time?” ROTATE PARTIES

	<u>Oct. 17</u> <u>'16</u>	<u>Oct</u> <u>26-29</u>	<u>Oct</u> <u>27-30</u>	<u>Oct</u> <u>28-31</u>	<u>Oct 29-</u> <u>Nov 1</u>	<u>Oct 30-</u> <u>Nov 2</u>	<u>Oct 31-</u> <u>Nov 3</u>	<u>Nov</u> <u>1-4</u>	<u>Nov</u> <u>2-5</u>	<u>Nov</u> <u>3-6</u>
<b>Republican</b>	34%	40%	39%	38%	38%	37%	38%	38%	39%	<b>37%</b>
<b>Democrat</b>	43%	38%	38%	37%	39%	41%	42%	43%	42%	<b>43%</b>
<b>Other</b>	1%	1%	1%	1%	0%	0%	0%	1%	1%	<b>0%</b>
<b>Undecided</b>	22%	22%	23%	24%	22%	22%	19%	18%	19%	<b>20%</b>
<b>(N=)</b>	(688)	(490)	(445)	(496)	(458)	(453)	(498)	(559)	(614)	<b>(660)</b>

### Generic NH Executive Council Ballot With Leaners

“Are you leaning toward voting for the Republican candidate to the New Hampshire Executive Council or for the Democratic candidate?” ROTATE PARTIES

	<u>Oct</u> <u>26-29</u>	<u>Oct</u> <u>27-30</u>	<u>Oct</u> <u>28-31</u>	<u>Oct 29-</u> <u>Nov 1</u>	<u>Oct 30-</u> <u>Nov 2</u>	<u>Oct 31-</u> <u>Nov 3</u>	<u>Nov</u> <u>1-4</u>	<u>Nov</u> <u>2-5</u>	<u>Nov</u> <u>3-6</u>
<b>Republican</b>	42%	42%	42%	41%	39%	40%	39%	40%	<b>38%</b>
<b>Democrat</b>	40%	40%	40%	42%	44%	45%	45%	44%	<b>44%</b>
<b>Other</b>	1%	1%	1%	0%	0%	0%	1%	1%	<b>0%</b>
<b>Undecided</b>	17%	18%	18%	17%	17%	15%	16%	16%	<b>17%</b>
<b>(N=)</b>	(489)	(444)	(495)	(457)	(453)	(497)	(558)	(613)	<b>(657)</b>

## Vote for Congress - Guinta vs. Shea-Porter vs. O'Connor

	Guinta	Shea-Porter	O'Connor	Other	Undecided	(N)
<b>NH First District Likely Voters</b>	30%	41%	15%	0%	13%	323
Registered Democrat	3%	82%	7%		8%	104
Registered Undeclared/Not Reg.	23%	33%	24%	1%	19%	111
Registered Republican	64%	9%	14%		14%	107
Democrat	2%	78%	12%		8%	135
Independent	20%	30%	34%	2%	14%	44
Republican	62%	7%	12%		19%	138
Core DEM		82%	11%		6%	129
Swing Voter	19%	31%	30%	1%	19%	71
Core GOP	68%	3%	11%		18%	123
Will Definitely Vote	30%	42%	14%	0%	13%	304
Will Vote Unless Emergency	36%	15%	34%		16%	19
Extremely Interested in Election	30%	46%	14%	0%	9%	208
Very Interested	32%	30%	18%		20%	95
Somewhat/Not Very Interested	18%	39%	15%		28%	20
Trump Voter	59%	7%	17%		17%	134
Clinton Voter	3%	78%	11%		9%	148
Johnson Voter	47%	12%	27%		15%	19
Stein Voter		67%		33%		2
Other/Undecided	32%	13%	33%		22%	18
18 to 34	35%	37%	15%		13%	80
35 to 49	22%	41%	21%		15%	89
50 to 64	26%	40%	17%	1%	15%	94
65 and older	43%	49%	3%		5%	51
Male	35%	31%	18%	0%	15%	150
Female	26%	49%	13%		12%	173
Male, Married	33%	34%	15%	1%	17%	85
Female, Married	27%	49%	11%		13%	103
Male, Unmarried	39%	27%	23%		10%	61
Female, Unmarried	23%	49%	15%		12%	69
Working Class Men	44%	25%	18%		13%	63
Working Class Women	31%	40%	14%		15%	59
College Educ Men	30%	36%	18%	1%	16%	81
College Educ Women	23%	54%	12%		11%	114
High school or less	34%	31%	14%		21%	48
Technical school/Some college	40%	33%	17%		9%	74
College graduate	34%	41%	14%	1%	11%	122
Postgraduate work	13%	56%	15%		16%	73
Central / Lakes	41%	34%	4%		22%	43
Manchester Area	29%	37%	19%		15%	91
Mass Border	44%	36%	7%		14%	57
North Country	16%	45%	24%		14%	23
Seacoast	23%	48%	20%	1%	9%	109

## Vote for Congress - Guinta vs. Shea-Porter vs. O'Connor With Leaners

	Guinta	Shea-Porter	O'Connor	Other	Undecided	(N)
<b>NH First District Likely Voters</b>	33%	42%	16%	0%	9%	323
Registered Democrat	3%	83%	8%		6%	104
Registered Undeclared/Not Reg.	26%	36%	24%	1%	13%	111
Registered Republican	69%	9%	14%		8%	107
Democrat	2%	80%	13%		5%	135
Independent	20%	33%	34%	2%	11%	44
Republican	67%	7%	12%		13%	138
Core DEM		85%	12%		3%	129
Swing Voter	21%	33%	30%	1%	16%	71
Core GOP	74%	3%	12%		12%	123
Will Definitely Vote	32%	43%	15%	0%	9%	304
Will Vote Unless Emergency	36%	20%	34%		10%	19
Extremely Interested in Election	32%	47%	15%	0%	6%	208
Very Interested	35%	32%	19%		15%	95
Somewhat/Not Very Interested	26%	39%	15%		19%	20
Trump Voter	64%	7%	17%		12%	134
Clinton Voter	3%	80%	11%		5%	148
Johnson Voter	47%	12%	27%		15%	19
Stein Voter		67%		33%		2
Other/Undecided	32%	17%	33%		19%	18
18 to 34	37%	37%	15%		11%	80
35 to 49	26%	43%	21%		9%	89
50 to 64	29%	42%	18%	1%	10%	94
65 and older	44%	50%	3%		3%	51
Male	37%	32%	18%	0%	12%	150
Female	29%	51%	14%		7%	173
Male, Married	35%	36%	16%	1%	13%	85
Female, Married	30%	51%	12%		7%	103
Male, Unmarried	41%	27%	23%		8%	61
Female, Unmarried	27%	50%	15%		8%	69
Working Class Men	47%	25%	19%		9%	63
Working Class Women	38%	41%	14%		7%	59
College Educ Men	31%	37%	18%	1%	13%	81
College Educ Women	24%	55%	13%		7%	114
High school or less	43%	31%	16%		10%	48
Technical school/Some college	42%	34%	17%		7%	74
College graduate	34%	42%	14%	1%	8%	122
Postgraduate work	15%	58%	16%		12%	73
Central / Lakes	50%	36%	4%		10%	43
Manchester Area	31%	40%	20%		9%	91
Mass Border	44%	36%	8%		12%	57
North Country	16%	45%	24%		14%	23
Seacoast	24%	48%	20%	1%	7%	109

## Vote for Congress - Lawrence vs. Kuster

	Lawrence	Kuster	Other	Undecided	(N)
<b>NH Second District Likely Voters</b>	30%	53%	1%	16%	322
Registered Democrat	2%	94%	0%	4%	107
Registered Undeclared/Not Reg.	24%	48%	1%	26%	122
Registered Republican	71%	10%	2%	17%	92
Democrat	4%	88%		9%	146
Independent	23%	46%	4%	27%	54
Republican	70%	11%		19%	112
Core DEM	1%	90%		9%	153
Swing Voter	25%	41%	6%	29%	71
Core GOP	80%	3%		17%	99
Will Definitely Vote	31%	53%	1%	14%	307
Will Vote Unless Emergency	10%	38%		51%	16
Extremely Interested in Election	27%	60%	1%	11%	210
Very Interested	36%	40%		25%	75
Somewhat/Not Very Interested	38%	35%	4%	23%	36
Trump Voter	76%	7%		17%	102
Clinton Voter	3%	87%	0%	9%	173
Johnson Voter	42%	9%	14%	35%	18
Stein Voter	47%	53%			3
Other/Undecided	27%	35%	4%	33%	22
18 to 34	33%	38%	3%	26%	57
35 to 49	30%	53%		16%	69
50 to 64	33%	50%		17%	113
65 and older	25%	67%	2%	7%	74
Male	37%	46%	2%	14%	156
Female	24%	59%		17%	167
Male, Married	35%	48%	2%	15%	105
Female, Married	28%	58%		14%	109
Male, Unmarried	41%	43%	3%	13%	50
Female, Unmarried	16%	60%		24%	55
Working Class Men	34%	46%	4%	16%	56
Working Class Women	29%	48%		22%	56
College Educ Men	38%	47%	2%	13%	98
College Educ Women	21%	64%		15%	108
High school or less	29%	54%	1%	15%	38
Technical school/Some college	33%	43%	2%	21%	73
College graduate	34%	48%		17%	123
Postgraduate work	21%	68%	2%	9%	84
Central / Lakes	34%	50%		16%	61
Connecticut Valley	17%	62%	1%	20%	100
Manchester Area	47%	28%		25%	16
Mass Border	39%	46%	2%	13%	115
North Country	25%	68%		8%	30

## Vote for Congress - Lawrence vs. Kuster With Leaners

	Lawrence	Kuster	Other	Undecided	(N)
<b>NH Second District Likely Voters</b>	32%	53%	1%	14%	322
Registered Democrat	2%	94%	0%	4%	107
Registered Undeclared/Not Reg.	25%	49%	1%	24%	121
Registered Republican	74%	10%	2%	14%	92
Democrat	4%	88%		8%	146
Independent	24%	47%	4%	24%	54
Republican	73%	11%		17%	112
Core DEM	1%	91%		9%	152
Swing Voter	26%	42%	6%	26%	71
Core GOP	82%	3%		15%	99
Will Definitely Vote	33%	54%	1%	12%	306
Will Vote Unless Emergency	10%	38%		51%	16
Extremely Interested in Election	29%	60%	1%	9%	210
Very Interested	36%	40%		24%	74
Somewhat/Not Very Interested	38%	35%	4%	23%	36
Trump Voter	77%	7%		16%	102
Clinton Voter	4%	88%	0%	8%	173
Johnson Voter	46%	9%	14%	31%	18
Stein Voter	47%	53%			3
Other/Undecided	28%	36%	4%	31%	22
18 to 34	33%	38%	3%	26%	57
35 to 49	33%	53%		14%	69
50 to 64	34%	50%		16%	113
65 and older	26%	68%	2%	5%	74
Male	38%	47%	2%	13%	156
Female	26%	59%		16%	166
Male, Married	37%	48%	2%	13%	105
Female, Married	30%	59%		12%	108
Male, Unmarried	41%	43%	3%	13%	50
Female, Unmarried	16%	60%		24%	55
Working Class Men	34%	47%	4%	15%	56
Working Class Women	30%	49%		22%	55
College Educ Men	39%	47%	2%	12%	98
College Educ Women	23%	64%		13%	108
High school or less	29%	54%	1%	15%	38
Technical school/Some college	33%	45%	2%	20%	72
College graduate	37%	48%		15%	123
Postgraduate work	21%	68%	2%	9%	84
Central / Lakes	35%	51%		14%	60
Connecticut Valley	17%	62%	1%	20%	100
Manchester Area	47%	28%		25%	16
Mass Border	42%	46%	2%	10%	115
North Country	25%	68%		8%	30

## Vote for NH House

	Republican	Democrat	Some Democrat, Some Republican	Other	DK/Not Sure	(N)
<b>NH Likely Voters</b>	39%	45%	1%	0%	14%	665
Registered Democrat	3%	91%	0%		6%	213
Registered Undeclared/Not Reg.	30%	40%	2%	1%	27%	247
Registered Republican	88%	3%	1%	1%	7%	203
Democrat	1%	90%	1%		7%	288
Independent	28%	27%	2%	2%	41%	98
Republican	85%	3%	1%	1%	10%	263
Core DEM		94%	0%		6%	287
Swing Voter	31%	20%	4%	1%	43%	144
Core GOP	92%	0%	1%	1%	6%	233
Will Definitely Vote	39%	46%	1%	0%	13%	629
Will Vote Unless Emergency	35%	32%			34%	36
Extremely Interested in Election	37%	51%	1%	1%	10%	427
Very Interested	40%	39%	2%		20%	180
Somewhat/Not Very Interested	51%	23%	1%		25%	56
18 to 34	44%	43%	1%		12%	143
35 to 49	39%	46%	1%	1%	12%	163
50 to 64	39%	43%	1%		17%	214
65 and older	34%	53%	2%		12%	126
Male	45%	36%	1%	1%	16%	312
Female	33%	53%	1%		12%	354
Male, Married	42%	40%	1%	1%	17%	191
Female, Married	36%	51%	1%		12%	219
Male, Unmarried	52%	30%	3%	1%	14%	117
Female, Unmarried	28%	57%	2%		13%	130
Working Class Men	50%	33%	3%	1%	12%	121
Working Class Women	40%	44%	1%		15%	121
College Educ Men	42%	39%	0%	1%	18%	183
College Educ Women	30%	58%	1%		11%	228
High school or less	50%	37%	2%		11%	90
Technical school/Some college	42%	40%	2%	1%	16%	151
College graduate	44%	42%	0%	1%	14%	252
Postgraduate work	22%	62%	1%		15%	159
Central / Lakes	40%	42%	1%	1%	16%	109
Connecticut Valley	27%	61%	6%		6%	110
Manchester Area	45%	35%	1%	1%	18%	116
Mass Border	48%	38%	0%		14%	173
North Country	35%	51%			14%	52
Seacoast	31%	53%			16%	106
First Cong. District	43%	41%	0%	1%	16%	327
Second Cong. District	36%	49%	2%	0%	13%	338

## Vote for NH House With Leaners

	Republican	Democrat	Some Democrat, Some Republican	Other	DK/Not Sure	(N)
<b>NH Likely Voters</b>	40%	46%	1%	1%	11%	665
Registered Democrat	3%	92%	0%	1%	4%	213
Registered Undeclared/Not Reg.	33%	41%	2%	1%	23%	247
Registered Republican	89%	3%	1%	1%	6%	203
Democrat	1%	91%	1%		6%	288
Independent	31%	31%	2%	3%	33%	98
Republican	87%	3%	1%	1%	8%	263
Core DEM		96%	0%		4%	287
Swing Voter	34%	22%	4%	2%	38%	144
Core GOP	94%	0%	1%	1%	4%	233
Will Definitely Vote	41%	47%	1%	1%	11%	629
Will Vote Unless Emergency	36%	36%			28%	36
Extremely Interested in Election	39%	52%	1%	1%	7%	427
Very Interested	42%	39%	2%		18%	180
Somewhat/Not Very Interested	51%	23%	1%		25%	56
18 to 34	44%	44%	1%		11%	143
35 to 49	41%	47%	1%	2%	8%	163
50 to 64	41%	44%	1%		14%	214
65 and older	35%	54%	2%		10%	126
Male	48%	37%	1%	1%	13%	312
Female	34%	54%	1%		10%	354
Male, Married	44%	41%	1%	1%	14%	191
Female, Married	37%	53%	1%		9%	219
Male, Unmarried	54%	30%	3%	3%	11%	117
Female, Unmarried	29%	58%	2%		12%	130
Working Class Men	52%	33%	3%	1%	10%	121
Working Class Women	40%	45%	1%		13%	121
College Educ Men	44%	40%	0%	2%	15%	183
College Educ Women	31%	60%	1%		9%	228
High school or less	51%	37%	2%		10%	90
Technical school/Some college	44%	40%	2%	1%	13%	151
College graduate	45%	43%	0%	1%	11%	252
Postgraduate work	23%	63%	1%		13%	159
Central / Lakes	44%	44%	1%	3%	8%	109
Connecticut Valley	27%	61%	6%		6%	110
Manchester Area	46%	35%	1%	1%	17%	116
Mass Border	49%	39%	0%		12%	173
North Country	35%	51%			14%	52
Seacoast	32%	55%			13%	106
First Cong. District	45%	42%	0%	1%	12%	327
Second Cong. District	36%	50%	2%	1%	11%	338

## Vote for NH Senate

	Republican	Democrat	Other	DK/Not Sure	(N)
<b>NH Likely Voters</b>	40%	46%	0%	13%	678
Registered Democrat	4%	93%		3%	216
Registered Undeclared/Not Reg.	31%	40%	1%	28%	254
Registered Republican	89%	4%		7%	207
Democrat	2%	91%		7%	289
Independent	29%	33%	2%	36%	104
Republican	86%	3%	0%	10%	269
Core DEM		95%		5%	286
Swing Voter	34%	24%	2%	40%	156
Core GOP	94%	1%		6%	237
Will Definitely Vote	40%	47%	0%	13%	643
Will Vote Unless Emergency	40%	33%		28%	35
Extremely Interested in Election	39%	50%	1%	11%	437
Very Interested	44%	39%		17%	182
Somewhat/Not Very Interested	45%	32%		23%	57
18 to 34	44%	44%		12%	149
35 to 49	40%	46%	1%	13%	166
50 to 64	42%	45%		13%	215
65 and older	35%	51%	1%	13%	129
Male	47%	36%	1%	16%	321
Female	34%	55%	0%	11%	358
Male, Married	46%	38%		15%	196
Female, Married	36%	52%	0%	12%	224
Male, Unmarried	49%	33%	1%	17%	121
Female, Unmarried	30%	60%		10%	129
Working Class Men	50%	34%	1%	15%	128
Working Class Women	39%	44%	1%	16%	122
College Educ Men	46%	37%		17%	185
College Educ Women	30%	61%		9%	231
High school or less	48%	37%		15%	95
Technical school/Some college	43%	40%	2%	15%	155
College graduate	46%	43%		11%	254
Postgraduate work	23%	62%		15%	162
Central / Lakes	43%	46%		11%	112
Connecticut Valley	32%	59%	1%	8%	110
Manchester Area	45%	37%	1%	16%	116
Mass Border	49%	37%		14%	181
North Country	27%	52%		21%	52
Seacoast	33%	53%		14%	108
First Cong. District	43%	43%	0%	14%	334
Second Cong. District	38%	49%	0%	13%	344



## Vote for NH Senate With Leaners

	Republican	Democrat	Other	DK/Not Sure	(N)
<b>NH Likely Voters</b>	41%	47%	0%	12%	678
Registered Democrat	4%	93%		2%	216
Registered Undeclared/Not Reg.	32%	42%	1%	25%	254
Registered Republican	91%	4%		5%	207
Democrat	2%	92%		6%	289
Independent	31%	35%	2%	32%	104
Republican	88%	3%	0%	9%	269
Core DEM		97%		3%	286
Swing Voter	34%	25%	2%	39%	156
Core GOP	96%	1%		3%	237
Will Definitely Vote	41%	48%	0%	11%	643
Will Vote Unless Emergency	40%	33%		28%	35
Extremely Interested in Election	39%	51%	1%	9%	437
Very Interested	45%	40%		15%	182
Somewhat/Not Very Interested	46%	32%		22%	57
18 to 34	45%	45%		10%	149
35 to 49	41%	47%	1%	11%	166
50 to 64	42%	46%		12%	215
65 and older	37%	53%	1%	10%	129
Male	49%	37%	1%	13%	321
Female	34%	55%	0%	10%	358
Male, Married	47%	39%		14%	196
Female, Married	36%	53%	0%	10%	224
Male, Unmarried	53%	34%	1%	11%	121
Female, Unmarried	31%	60%		10%	129
Working Class Men	53%	35%	1%	11%	128
Working Class Women	39%	46%	1%	14%	122
College Educ Men	46%	40%		14%	185
College Educ Women	31%	61%		8%	231
High school or less	48%	37%		14%	95
Technical school/Some college	45%	42%	2%	12%	155
College graduate	47%	44%		10%	254
Postgraduate work	23%	64%		13%	162
Central / Lakes	45%	46%		9%	112
Connecticut Valley	32%	61%	1%	6%	110
Manchester Area	47%	37%	1%	14%	116
Mass Border	49%	39%		12%	181
North Country	28%	55%		16%	52
Seacoast	33%	53%		14%	108
First Cong. District	44%	44%	0%	12%	334
Second Cong. District	38%	50%	0%	12%	344

## Vote for NH Executive Council

	Republican	Democrat	Other	DK/Not Sure	(N)
<b>NH Likely Voters</b>	37%	43%	0%	20%	660
Registered Democrat	4%	86%		10%	211
Registered Undeclared/Not Reg.	26%	38%	1%	34%	242
Registered Republican	83%	4%		13%	205
Democrat	3%	85%	0%	12%	283
Independent	29%	26%	2%	44%	101
Republican	78%	4%	0%	18%	261
Core DEM	1%	89%	0%	9%	282
Swing Voter	30%	19%	2%	50%	145
Core GOP	85%	2%		14%	233
Will Definitely Vote	37%	44%	1%	19%	625
Will Vote Unless Emergency	37%	24%		39%	35
Extremely Interested in Election	37%	48%	1%	15%	424
Very Interested	35%	36%		29%	178
Somewhat/Not Very Interested	48%	23%		30%	56
18 to 34	45%	40%		15%	139
35 to 49	36%	41%	1%	22%	165
50 to 64	37%	42%		21%	211
65 and older	31%	51%	1%	17%	125
Male	42%	35%	1%	23%	310
Female	33%	50%	0%	17%	350
Male, Married	39%	39%		22%	193
Female, Married	35%	48%	0%	17%	219
Male, Unmarried	47%	28%	1%	24%	113
Female, Unmarried	29%	53%	1%	18%	127
Working Class Men	47%	31%	1%	21%	121
Working Class Women	37%	42%	1%	20%	115
College Educ Men	37%	38%		24%	182
College Educ Women	31%	54%		15%	230
High school or less	43%	36%	1%	20%	89
Technical school/Some college	42%	36%	2%	20%	147
College graduate	42%	38%		20%	253
Postgraduate work	20%	62%		18%	158
Central / Lakes	37%	40%	1%	22%	107
Connecticut Valley	28%	58%	1%	13%	106
Manchester Area	39%	36%	1%	23%	114
Mass Border	44%	36%		20%	173
North Country	33%	46%		22%	52
Seacoast	33%	48%		19%	108
First Cong. District	39%	38%	1%	22%	329
Second Cong. District	35%	47%	0%	18%	331
1st EC District	38%	44%	0%	18%	137
2nd EC District	27%	54%	1%	18%	134
3rd EC District	48%	35%		17%	121
4th EC District	34%	36%	1%	28%	133
5th EC District	38%	44%		18%	135

## Vote for NH Executive Council With Leaners

	Republican	Democrat	Other	DK/Not Sure	(N)
<b>NH Likely Voters</b>	38%	44%	0%	17%	657
Registered Democrat	4%	87%		9%	211
Registered Undeclared/Not R..	28%	40%	1%	30%	240
Registered Republican	86%	4%		10%	205
Democrat	3%	86%	0%	11%	283
Independent	31%	29%	2%	38%	100
Republican	80%	4%	0%	15%	260
Core DEM	1%	91%	0%	8%	282
Swing Voter	31%	20%	2%	48%	143
Core GOP	88%	2%		10%	233
Will Definitely Vote	38%	45%	1%	16%	624
Will Vote Unless Emergency	41%	25%		35%	34
Extremely Interested in Election	37%	49%	1%	12%	423
Very Interested	38%	37%		25%	177
Somewhat/Not Very Interested	48%	23%		30%	56
18 to 34	46%	42%		12%	139
35 to 49	39%	42%	1%	18%	163
50 to 64	38%	43%		19%	210
65 and older	32%	52%	1%	15%	125
Male	44%	37%	1%	18%	308
Female	33%	51%	0%	16%	349
Male, Married	42%	40%		18%	192
Female, Married	35%	49%	0%	15%	218
Male, Unmarried	50%	30%	1%	18%	113
Female, Unmarried	29%	53%	1%	17%	127
Working Class Men	51%	31%	1%	17%	121
Working Class Women	37%	42%	1%	19%	115
College Educ Men	40%	41%		20%	180
College Educ Women	31%	56%		14%	229
High school or less	44%	36%	1%	19%	89
Technical school/Some college	44%	36%	2%	18%	147
College graduate	43%	40%		17%	252
Postgraduate work	21%	64%		15%	158
Central / Lakes	41%	43%	1%	15%	105
Connecticut Valley	28%	58%	1%	13%	105
Manchester Area	42%	36%	1%	21%	114
Mass Border	44%	37%		19%	173
North Country	33%	50%		17%	52
Seacoast	35%	48%		17%	108
First Cong. District	41%	40%	1%	18%	328
Second Cong. District	35%	48%	0%	16%	330
1st EC District	39%	46%	0%	15%	136
2nd EC District	30%	56%	1%	13%	133
3rd EC District	48%	35%		17%	121
4th EC District	37%	36%	1%	25%	133
5th EC District	38%	46%		16%	135