



University of  
New Hampshire

# THE WMUR GRANITE STATE POLL



March 1, 2016

## NH ISSUES: HASSAN POPULAR IN FINAL YEAR AS GOVERNOR, ILLEGAL DRUGS THE MOST IMPORTANT ISSUE

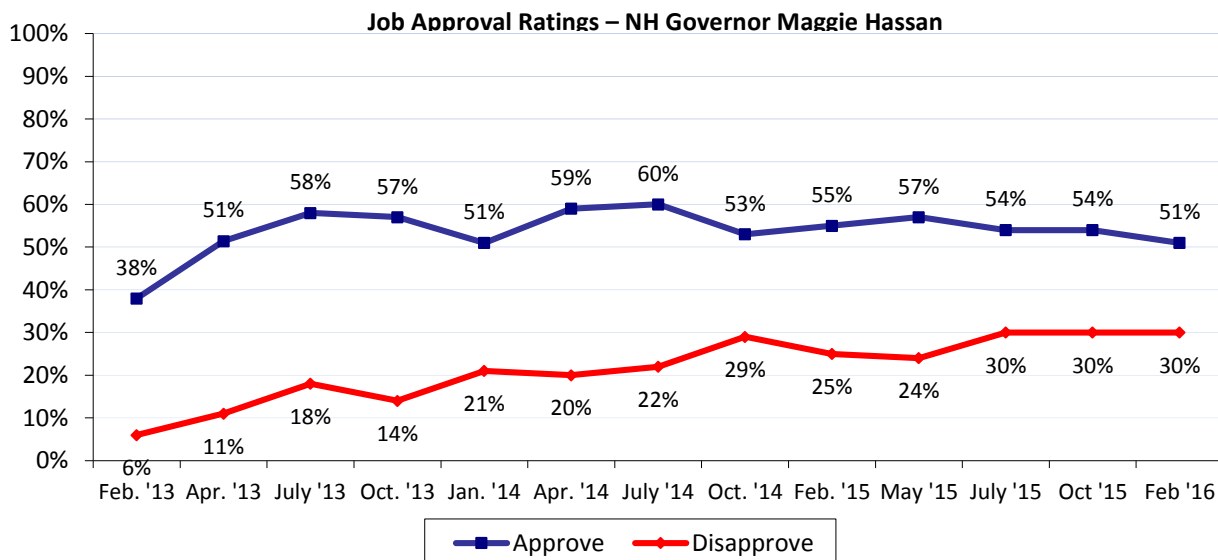
By: Andrew E. Smith, Ph.D.  
Zachary S. Azem, M.A.  
UNH Survey Center  
603/862-2226  
www.unh.edu/survey-center

DURHAM, NH – Half of Granite Staters approve of the job that outgoing governor Maggie Hassan is doing. Drug abuse continues to be seen as the state’s most important problem and about half of Granite Staters say they know someone who has abused heroin. The majority of New Hampshire residents continue to support legalizing marijuana for recreational use, and a larger majority favor universal background checks on gun purchases. A plurality of New Hampshire residents support a bill to establish a 30 day residency requirement in order to vote in a state election.

These findings are based on the latest **WMUR Granite State Poll**,\* conducted by the University of New Hampshire Survey Center. Six hundred and eighty-seven (687) randomly selected New Hampshire adults were interviewed by landline and cellular telephone between February 20 and February 28, 2016. The margin of sampling error for the survey is +/- 3.7 percent. Included were six hundred and twenty-eight (628) likely 2016 general election voters (MSE = +/- 3.9%).

### Gubernatorial Approval

Democratic governor Maggie Hassan, who has declared a run for U.S. Senate and will not run for a third term, continues to have the approval of most New Hampshire adults. In the most recent Granite State Poll, 51% of Granite Staters say they approve of the job Hassan is doing as governor, 30% disapprove, and 19% are neutral or don’t know enough to say. Democrats (74% approve, 13% disapprove) approve of Hassan’s job performance, while Independents somewhat approve (39% approve, 29% disapprove) and Republicans somewhat disapprove (33% approve, 48% disapprove).

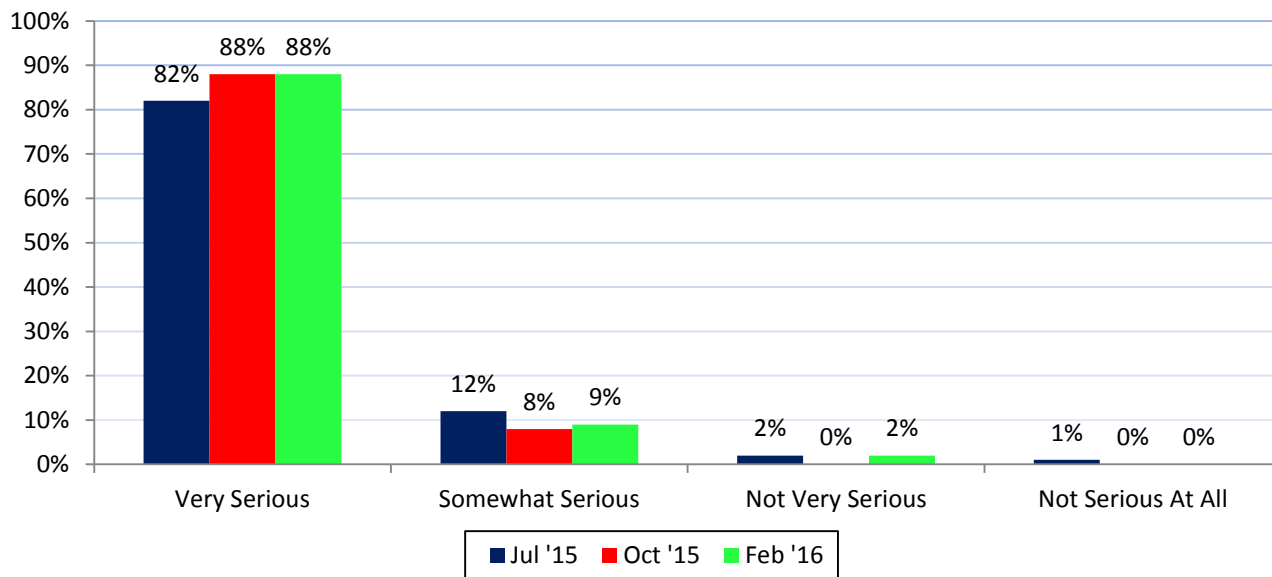


\* We ask that this copyrighted information be referred to as *the Granite State Poll*, sponsored by WMUR-TV, and conducted by the University of New Hampshire Survey Center.



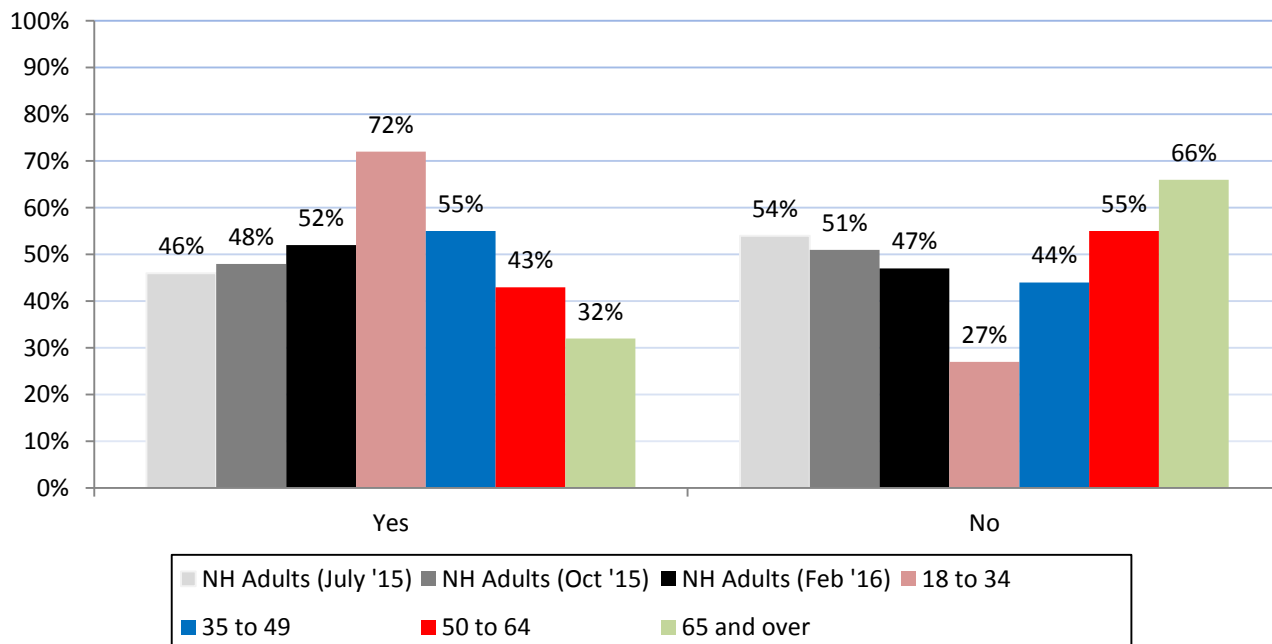
### Seriousness of Heroin Problem in New Hampshire

Overdoses and deaths from heroin have gone up dramatically in New Hampshire in recent years and the families of victims and political leaders have been increasingly vocal about this problem. Even candidates for president have addressed this issue during visits to the state during the primary campaign. Almost nine in ten (88%) Granite State adults say that heroin abuse is a very serious problem in New Hampshire, 9% say it is somewhat serious, and only 2% say it is not very serious. The percentage saying heroin abuse is a very serious problem has remained unchanged since October.



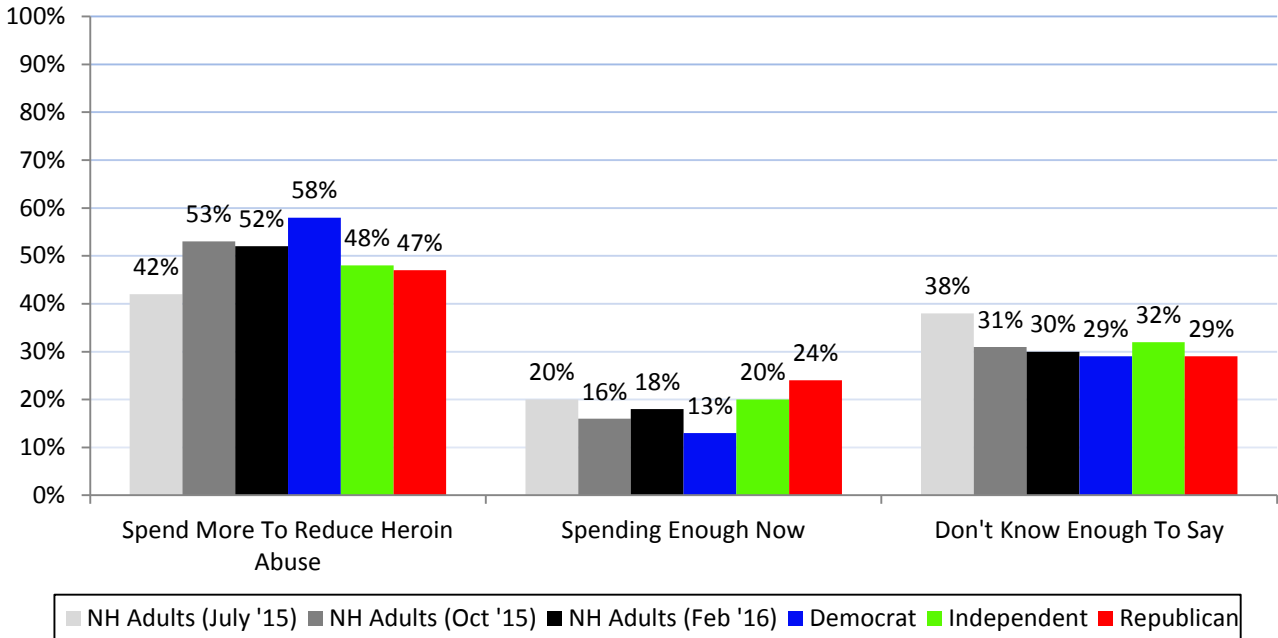
### Know Someone Who Has Abused Heroin

Furthermore, just over half (52%) of New Hampshire residents say they personally know someone who has abused heroin in the past 5 years. Younger residents are more likely to know someone who has abused heroin than older residents as 72% of adults under 35 say they personally know someone who has abused heroin in the past 5 years.



### Should State and Local Governments Spend More To Reduce Heroin Abuse?

When asked whether or not state and local governments should be spending more on programs to combat heroin abuse, a majority (52%) believe the government should spend more, 18% believe we are spending enough now and 30% don't know enough to say. Democrats (58%) are more likely to say the government should spend more to reduce heroin abuse than Independents (48%) or Republicans (47%). These figures have stayed steady since October.

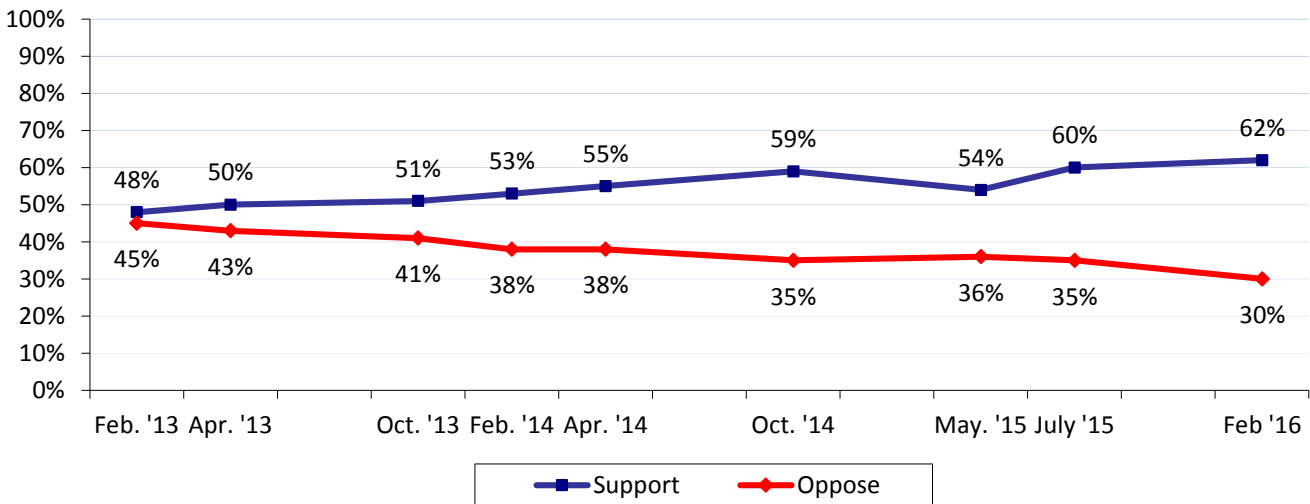


### Recreational Marijuana Legalization

New Hampshire legalized marijuana for medical purposes in 2013, but bills to legalize marijuana for recreational use have not passed the legislature. However, a majority of Granite Staters support legalizing recreational marijuana in New Hampshire and have for several years. Currently, 62% support legalizing marijuana for recreational use (41% strongly and 21% somewhat), 30% oppose (19% strongly and 11% somewhat) and 8% are neutral or unsure.

Support for recreational marijuana legalization is strongest among younger adults (81% support), liberals (76%), those who never attend church (76%), and Democrats (70%). Opposition is strongest among regular churchgoers (63% oppose), older residents (47%), and conservatives (45%).

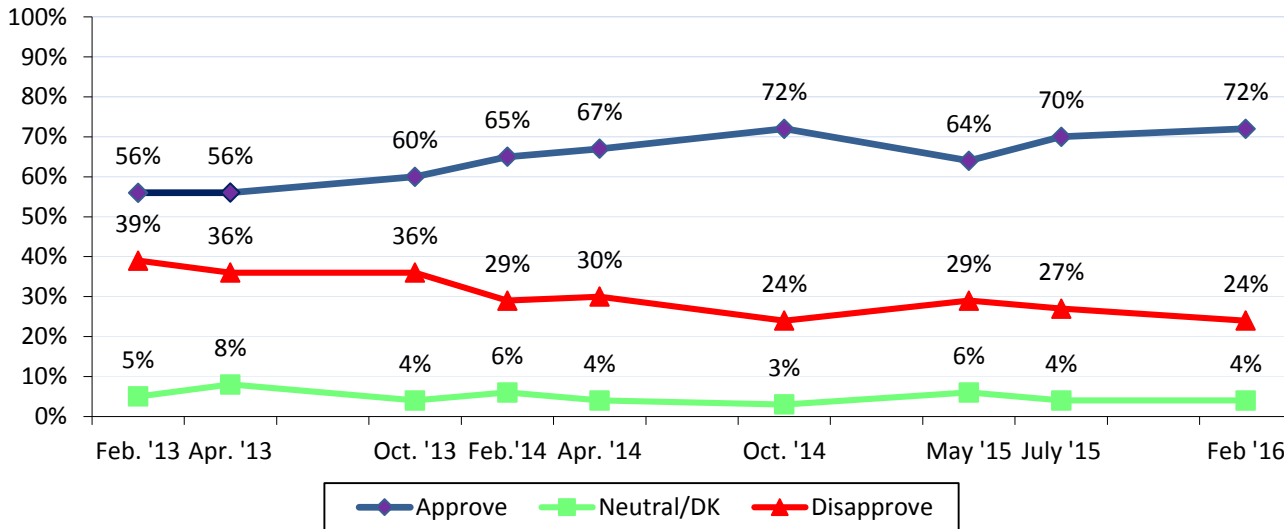
### Support/Oppose Legalizing Marijuana For Recreational Use



### Approve Of Marijuana Sold At Licensed Outlets

If marijuana were legalized in the Granite State, a majority of New Hampshire residents (72%) approve of selling it at licensed retail outlets and taxing it, similar to how alcohol is sold (52% strongly and 20% somewhat), only 24% disapprove of this idea (18% strongly and 6% somewhat), 1% are neutral and 3% are unsure.

### Approve Of Marijuana Being Sold At Licensed Outlets and Taxed At Liquor Levels

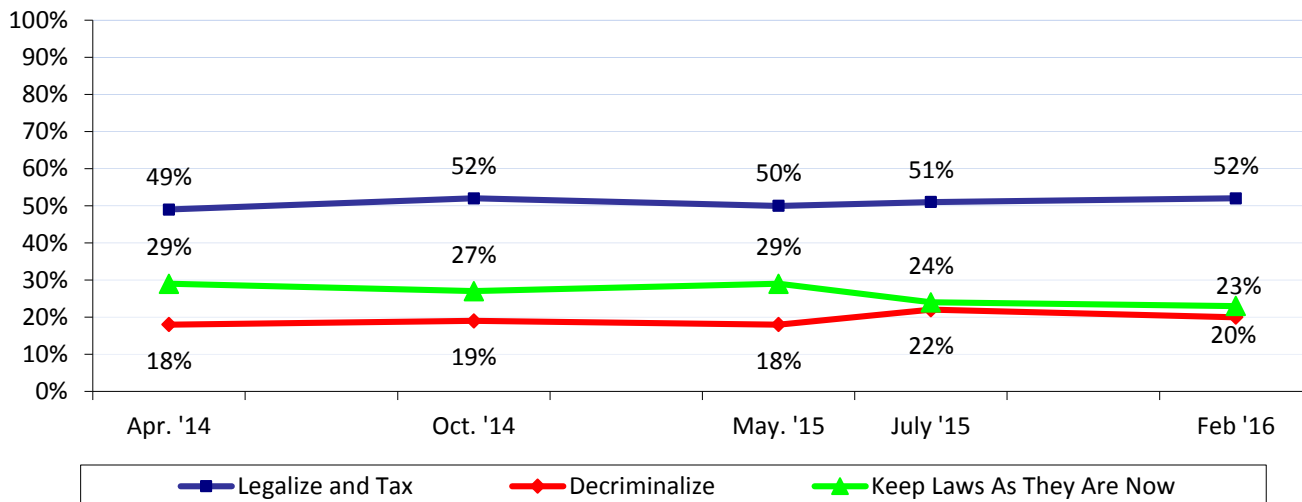


### Preference for Marijuana Laws

When asked what they would prefer the state legislature do about marijuana laws, 52% want marijuana legalized and taxed like alcohol, 20% want it decriminalized, 23% want to keep marijuana laws as they are now and 4% don't know or are unsure. This measure has stayed steady over the last year.

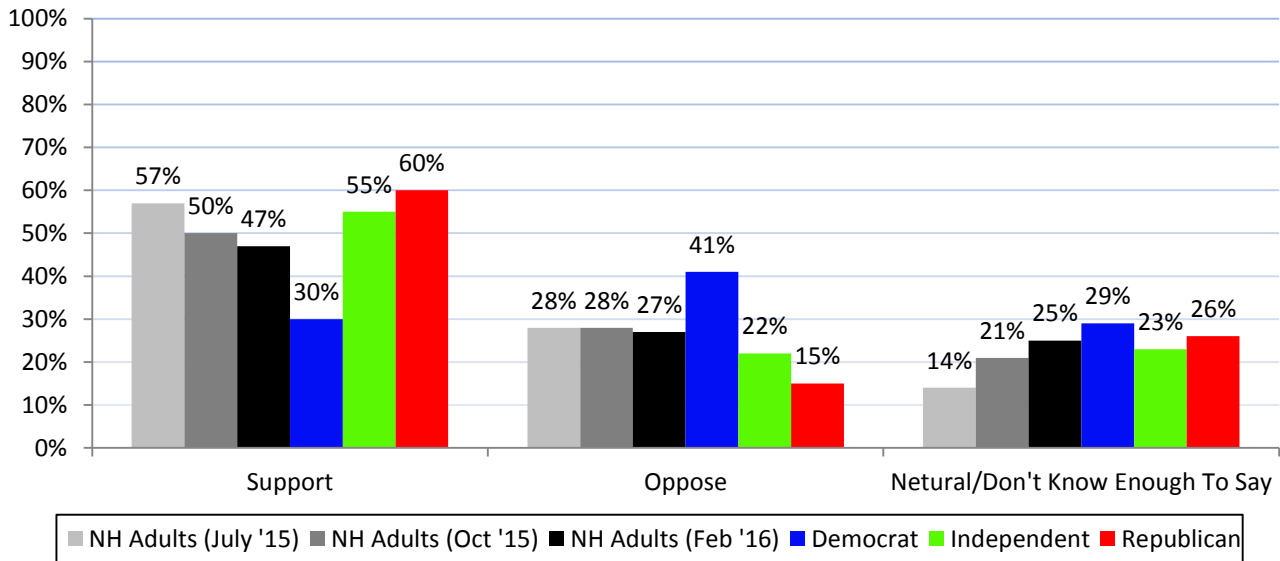
Majorities of Democrats (56%) and Independents (61%) prefer legalizing and taxing marijuana, while Republicans are more divided on the issue as 44% prefer legalization and 33% prefer keeping laws the way they are now.

### Preference for Marijuana Laws in NH



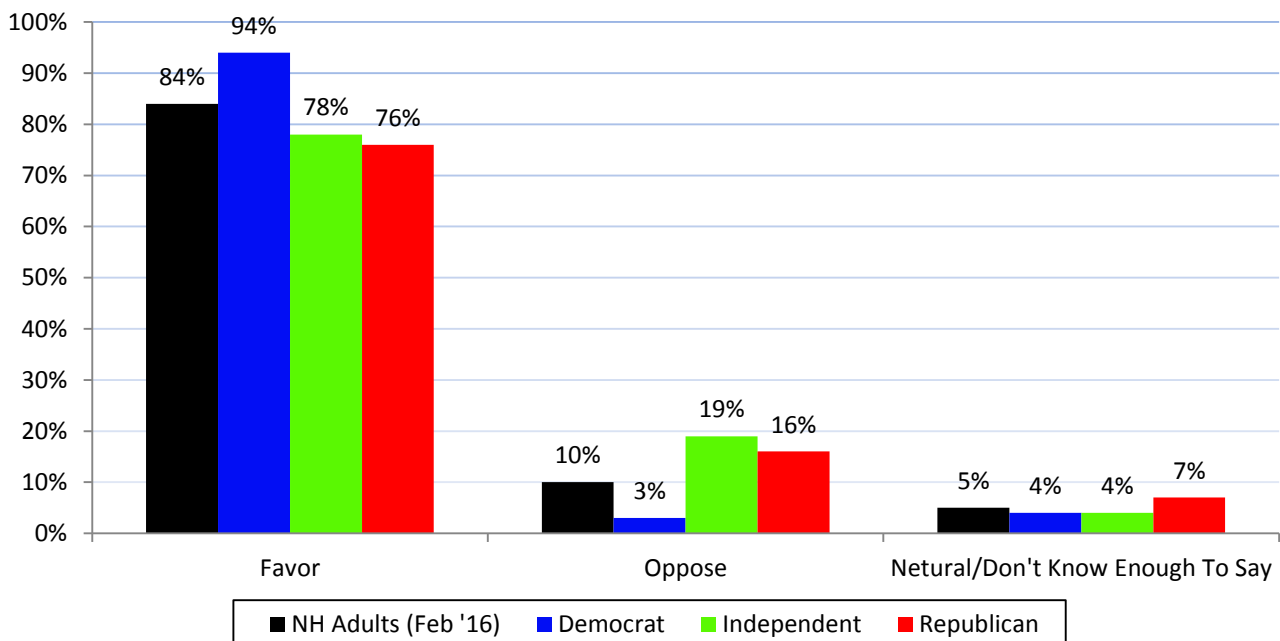
### Support/Oppose 30 Day Residency Law?

A contentious issue that the legislature will address once again this year is a bill that would require a person to live in New Hampshire for 30 days before being allowed to register to vote. Last year, the legislature passed this bill but Governor Hassan vetoed it. A plurality (47%) of Granite Staters support this bill (32% strongly and 15% somewhat), 27% oppose it (18% strongly and 9% somewhat), and 25% are neutral or don't know enough to say. The majority of Republicans (60% support, 15% oppose) and Independents (55% support, 22% oppose) support the legislation, while a plurality of Democrats (30% support, 41% oppose) oppose it. Support of this bill has dropped ten percentage points since July, but opposition has not changed.



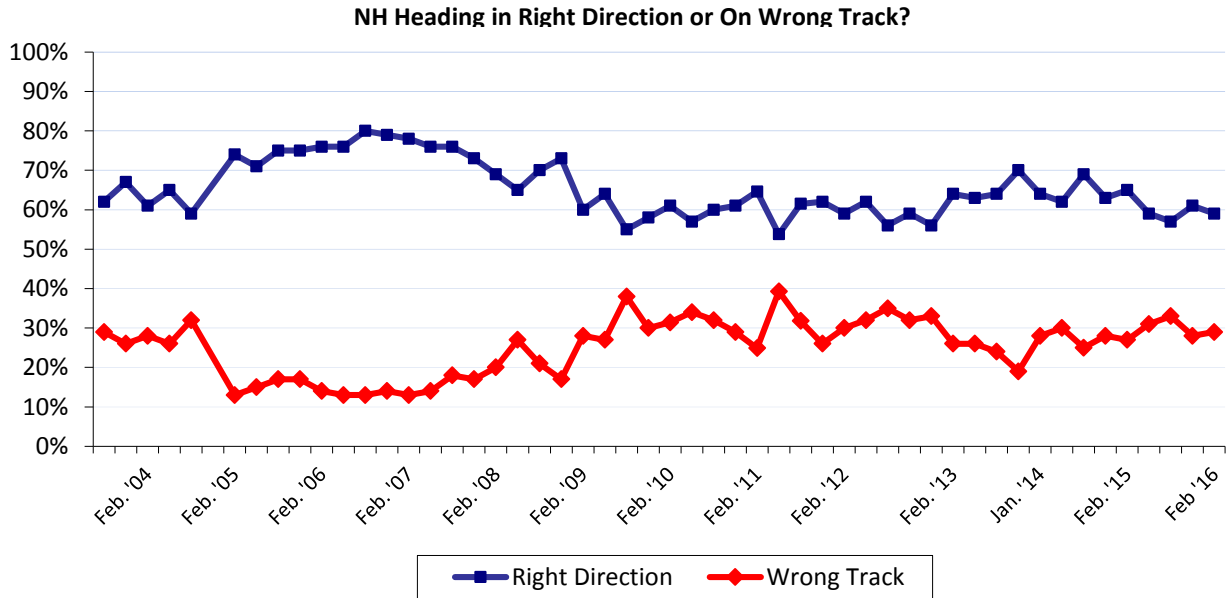
### Favor/Oppose Universal Background Checks?

Another issue constantly facing the legislature are changes to the state's gun laws, particularly whether there should be a required background check for all gun purchases. A large majority (84%) favor (75% strongly, 9% somewhat) required background checks for all gun purchases, 10% oppose, and 5% are neutral or unsure. Nearly all Democrats (94%), and most Independents (78%) and Republicans (76%) favor universal background checks.



### Right Direction or Wrong Track?

New Hampshire residents continue to think the state, as a whole, is headed in the right direction. Currently, 59% of New Hampshire adults feel the state is heading in the right direction, 29% think the state is seriously off on the wrong track, and 11% are unsure. Majorities of Democrats (69%), Republicans (53%) and Independents (52%) say the state is headed in the right direction.



### Granite State Poll Methodology

These findings are based on the latest WMUR Granite State Poll, conducted by the University of New Hampshire Survey Center and funded by WMUR-TV, Manchester, NH. Six hundred and eighty-seven (687) randomly selected New Hampshire adults were interviewed in English by landline and cellular telephone between February 20 and February 28, 2016. If a household included more than one adult, the adult who had the most recent birthday was selected to be interviewed.

The margin of sampling error is +/- 3.7 percent for the entire sample. Included were six hundred twenty-eight (628) likely 2016 general election voters (MSE +/- 3.9%). These MSE's have not been adjusted for design effect. The design effect for the survey is 1.1%.

The random sample used in the WMUR Granite State Poll was purchased from Marketing Systems Group (MSG), Horsham, PA. MSG screens each selected telephone number to eliminate non-working numbers, disconnected numbers, and business numbers to improve the efficiency of the sample, reducing the amount of time interviewers spend calling non-usable numbers.

The data have been weighted to adjust for numbers of adults and telephone lines within households. Additionally, data were weighted by respondent sex, age, and region of the state to targets from the most recent American Community Survey (ACS) conducted by the U.S. Census Bureau. In addition to potential sampling error, all surveys have other potential sources of non-sampling error including question order effects, question wording effects, and non-response. Due to rounding, percentages may not sum to 100%. The number of respondents in each demographic below may not equal the number reported in cross-tabulation tables as some respondents choose not to answer some questions.

For more information about the methodology used in the Granite State Poll, contact Dr. Andrew Smith at (603) 862-2226 or by email at [andrew.smith@unh.edu](mailto:andrew.smith@unh.edu).

### Granite State Poll, February 2016 Demographics

<b>Sex</b>	<b>N</b>	<b>%</b>	<b>Region</b>	<b>N</b>	<b>%</b>
Male	<b>336</b>	<b>49%</b>	North Country	<b>58</b>	<b>9%</b>
Female	<b>351</b>	<b>51%</b>	Central/Lakes	<b>111</b>	<b>16%</b>
			Connecticut Valley	<b>102</b>	<b>15%</b>
			Mass Border	<b>177</b>	<b>26%</b>
			Seacoast	<b>131</b>	<b>19%</b>
			Manchester Area	<b>108</b>	<b>16%</b>
<b>Age</b>	<b>N</b>	<b>%</b>	<b>Party Registration</b>	<b>N</b>	<b>%</b>
18 to 34	<b>175</b>	<b>26%</b>	Democrat	<b>165</b>	<b>24%</b>
35 to 49	<b>179</b>	<b>27%</b>	Undeclared/Not Reg.	<b>336</b>	<b>49%</b>
50 to 64	<b>190</b>	<b>29%</b>	Republican	<b>180</b>	<b>26%</b>
65 and Over	<b>119</b>	<b>18%</b>			
<b>Highest Level of Education</b>	<b>N</b>	<b>%</b>	<b>Party Identification</b>	<b>N</b>	<b>%</b>
High School or Less	<b>128</b>	<b>19%</b>	Democrat	<b>278</b>	<b>42%</b>
Some College	<b>181</b>	<b>27%</b>	Independent	<b>138</b>	<b>21%</b>
College Graduate	<b>221</b>	<b>32%</b>	Republican	<b>244</b>	<b>37%</b>
Post-Graduate	<b>153</b>	<b>22%</b>			



**Granite State Poll, February 2016 - Likely Presidential Election Voter Demographics**

<b>Sex</b>	<b>N</b>	<b>%</b>	<b>Region</b>	<b>N</b>	<b>%</b>
Male	<b>299</b>	<b>48%</b>	North Country	<b>50</b>	<b>8%</b>
Female	<b>329</b>	<b>52%</b>	Central/Lakes	<b>103</b>	<b>17%</b>
			Connecticut Valley	<b>92</b>	<b>15%</b>
<b>Age</b>	<b>N</b>	<b>%</b>	Mass Border	<b>156</b>	<b>25%</b>
18 to 34	<b>151</b>	<b>25%</b>	Seacoast	<b>125</b>	<b>20%</b>
35 to 49	<b>157</b>	<b>26%</b>	Manchester Area	<b>101</b>	<b>16%</b>
50 to 64	<b>186</b>	<b>31%</b>			
65 and Over	<b>115</b>	<b>19%</b>	<b>Party Registration</b>	<b>N</b>	<b>%</b>
			Democrat	<b>162</b>	<b>26%</b>
<b>Highest Level of Education</b>	<b>N</b>	<b>%</b>	Undeclared/Not Reg.	<b>285</b>	<b>45%</b>
High School or Less	<b>106</b>	<b>17%</b>	Republican	<b>176</b>	<b>28%</b>
Some College	<b>157</b>	<b>25%</b>			
College Graduate	<b>214</b>	<b>34%</b>	<b>Party Identification</b>	<b>N</b>	<b>%</b>
Post-Graduate	<b>149</b>	<b>24%</b>	Democrat	<b>268</b>	<b>44%</b>
			Independent	<b>114</b>	<b>19%</b>
			Republican	<b>230</b>	<b>38%</b>

### Gubernatorial Approval

“GENERALLY SPEAKING, do you approve or disapprove of the way Governor Hassan is handling her job as governor?”

	<u>Approve</u>	<u>Neutral/DK</u>	<u>Disapprove</u>	<u>(N=)</u>
<b>Feb '16</b>	<b>51%</b>	<b>19%</b>	<b>30%</b>	<b>(663)</b>
<b>Oct '15</b>	54%	17%	30%	(575)
<b>July '15</b>	54%	15%	30%	(522)
<b>May '15</b>	57%	19%	24%	(561)
<b>Feb. '15</b>	55%	20%	25%	(488)
<b>Oct. '14</b>	53%	18%	29%	(656)
<b>July '14</b>	60%	18%	22%	(647)
<b>Apr. '14</b>	59%	22%	20%	(492)
<b>Jan. '14</b>	51%	27%	21%	(560)
<b>Oct. '13</b>	57%	30%	14%	(649)
<b>July '13</b>	58%	24%	18%	(497)
<b>Apr. '13</b>	51%	37%	11%	(500)
<b>Feb. '13</b>	38%	56%	6%	(569)

### Seriousness of Heroin Problem in New Hampshire

“On a different topic, how serious of a problem do you think the abuse of heroin is in New Hampshire ... is it very serious ... somewhat serious ... not very serious ... or not serious at all?”

	<u>July '15</u>	<u>Oct '15</u>	<u>Feb '16</u>
Very Serious	82%	88%	<b>88%</b>
Somewhat Serious	12%	8%	<b>9%</b>
Not Very Serious	2%	0%	<b>2%</b>
Not Serious At All	1%	0%	<b>0%</b>
Don't Know	4%	3%	<b>1%</b>
(N=)	(531)	(587)	<b>(686)</b>

### Known Anyone Who Has Abused Heroin

“During the past 5 years, have you know anyone who has abused heroin, or not?”

	<u>July '15</u>	<u>Oct '15</u>	<u>Feb '16</u>
Yes	46%	48%	<b>52%</b>
No	54%	51%	<b>47%</b>
Don't Know	0%	1%	<b>1%</b>
(N=)	(530)	(586)	<b>(686)</b>

### Should State and Local Governments Spend More Trying To Reduce Heroin Abuse

“Do you think that state and local governments should spend more money than they do now trying to reduce heroin abuse or do you think they are spending enough already, or would you say you don't know enough about this topic?”

	<u>July '15</u>	<u>Oct '15</u>	<u>Feb '16</u>
Spend More to Reduce Heroin Abuse	42%	53%	<b>52%</b>
Spending Enough Now	20%	16%	<b>18%</b>
Don't Know Enough to Say	38%	31%	<b>30%</b>
(N=)	(529)	(585)	<b>(681)</b>

### Most Important Problem Facing New Hampshire

“Let's turn to the State of New Hampshire ... There are many problems facing the STATE OF NEW HAMPSHIRE today. In general, what do you think is the most IMPORTANT problem facing the STATE OF NEW HAMPSHIRE today?”

	<u>Jobs /</u> <u>Economy</u>	<u>Educ.</u> <u>Funding</u>	<u>Taxes</u>	<u>Health</u> <u>Care</u>	<u>Qual.</u> <u>Educ.</u>	<u>State</u> <u>Budget</u>	<u>Drugs</u>	<u>Other/</u> <u>DK</u>	<u>(N=)</u>
Feb '16	14%	2%	4%	5%	6%	1%	40%	28%	(659)
Oct '15	21%	2%	4%	6%	7%	3%	25%	33%	(563)
July '15	25%	2%	6%	7%	6%	9%	14%	31%	(509)
May '15	23%	3%	7%	7%	10%	9%	9%	32%	(540)
Feb. '15	29%	3%	5%	8%	7%	9%	4%	35%	(467)
Oct. '14	32%	3%	6%	8%	6%	4%	3%	39%	(644)
July '14	30%	5%	4%	12%	5%	4%	2%	39%	(614)
Apr. '14	23%	3%	9%	7%	7%	3%	4%	44%	(464)
Jan. '14	30%	3%	4%	9%	7%	4%	1%	39%	(545)
Oct. '13	29%	5%	8%	7%	6%	4%	2%	37%	(599)
July '13	35%	6%	8%	5%	7%	4%	1%	33%	(458)
Apr. '13	30%	6%	7%	5%	6%	6%	*	40%	(485)
Feb. '13	31%	7%	9%	6%	6%	9%	0%	30%	(564)
Oct. '12	38%	5%	7%	5%	7%	8%	*	24%	(575)
Aug. '12	42%	6%	6%	5%	5%	7%	*	23%	(541)
Apr. '12	36%	4%	5%	4%	4%	6%	0%	31%	(518)
Feb. '12	37%	4%	4%	5%	4%	9%	0%	27%	(509)
Oct. '11	48%	4%	5%	4%	3%	7%	0%	21%	(548)
July '11	34%	1%	6%	4%	3%	18%	0%	28%	(512)
Apr. '11	31%	4%	5%	3%	4%	23%	0%	22%	(494)
Feb. '11	43%	8%	6%	2%	4%	18%	0%	18%	(508)
Sept. '10	46%	4%	7%	2%	5%	16%	0%	21%	(504)
July '10	45%	3%	5%	2%	4%	21%	0%	17%	(498)
Apr. '10	39%	5%	8%	4%	2%	23%	0%	19%	(504)
Feb. '10	48%	6%	9%	4%	4%	14%	0%	15%	(486)
Oct. '09	36%	2%	9%	8%	5%	17%	0%	18%	(494)
July '09	32%	3%	11%	6%	2%	22%	0%	31%	(551)
Apr. '09	41%	5%	10%	5%	4%	10%	*	24%	(491)
Feb. '09	43%	6%	8%	4%	3%	17%	0%	19%	(607)
Sep. '08	30%	10%	14%	6%	7%	6%	*	20%	(531)
July '08	22%	13%	12%	5%	6%	6%	0%	22%	(504)
Apr. '08	24%	13%	17%	4%	6%	4%	1%	24%	(496)
Feb. '08	26%	11%	11%	10%	6%	6%	*	28%	(542)
Sept. '07	11%	22%	19%	9%	7%	2%	0%	28%	(499)
July '07	9%	23%	15%	11%	9%	1%	*	29%	(488)
Apr. '07	15%	28%	15%	7%	11%	1%	0%	20%	(501)
Feb. '07	14%	23%	16%	8%	9%	1%	0%	26%	(527)
Sept. '06	11%	27%	14%	7%	9%	2%	0%	26%	(499)
July '06	12%	19%	10%	6%	6%	1%	0%	38%	(490)
Apr. '06	16%	19%	11%	4%	10%	2%	0%	30%	(501)
Feb. '06	14%	20%	13%	10%	7%	1%	1%	28%	(498)
Oct. '05	12%	17%	18%	7%	6%	2%	0%	30%	(503)
July '05	13%	27%	13%	6%	5%	2%	*	28%	(496)
Apr. '05	13%	31%	14%	8%	6%	5%	0%	18%	(487)
Feb. '05	15%	24%	14%	6%	9%	2%	*	28%	(541)
July '04	13%	31%	11%	6%	5%	2%	1%	27%	(504)
Apr. '04	20%	20%	13%	5%	7%	4%	1%	28%	(536)
Feb. '04	22%	20%	14%	10%	7%	5%	0%	21%	(502)
Oct. '03	19%	21%	13%	5%	10%	6%	*	23%	(490)
June '03	16%	27%	13%	3%	6%	9%	1%	24%	(513)
Apr. '03	16%	28%	14%	4%	8%	6%	*	22%	(497)
Feb. '03	16%	29%	16%	2%	12%	2%	*	21%	(644)
June '02	16%	31%	15%	2%	12%	5%	0%	18%	(424)
Apr. '02	11%	31%	24%	2%	7%	1%	0%	22%	(684)
Feb. '02	12%	27%	17%	0%	21%	3%	0%	19%	(312)
Oct. '01	15%	42%	11%	1%	4%	*	0%	25%	(519)

### Support/Oppose 30 Day Residency Voter Registration Law

“On another topic, there is a bill that the state senate recently passed which would require someone living in the state for 30 days prior to an election in order to be eligible to vote. Supporters of the law say it will prevent people who take advantage of the system from influencing state elections. Opponents say the law is a tactic to prevent people from going to the polls. What about you... do you support or oppose this 30-day residency requirement or don't you know enough about this to say?”

ROTATE ARGUMENTS

IF SUPPORT/OPOSE: “Is that strongly or just somewhat?”

	<u>July '15</u>	<u>Oct '15</u>	<u>Feb '16</u>
Strongly Support	42%	36%	<b>32%</b>
Somewhat Support	15%	14%	<b>15%</b>
Neutral	1%	2%	<b>4%</b>
Somewhat Oppose	8%	10%	<b>9%</b>
Strongly Oppose	20%	18%	<b>18%</b>
Don't Know Enough To Say	13%	19%	<b>23%</b>
(N=)	(530)	(587)	<b>(686)</b>

### Favor/Oppose Universal Background Checks For Gun Purchases

“On another topic, do you favor or oppose requiring all gun buyers to pass a criminal background check, no matter where they buy the gun and no matter whom they buy it from, or don't you know enough about this issue to say?”

IF FAVOR: “Do you favor strongly or just somewhat?”

IF OPOSE: “Do you oppose strongly or just somewhat?”

	<u>Feb '16</u>
Strongly Favor	<b>75%</b>
Somewhat Favor	<b>9%</b>
Neutral	<b>1%</b>
Somewhat Oppose	<b>3%</b>
Strongly Oppose	<b>7%</b>
Don't Know Enough To Say	<b>4%</b>
(N=)	<b>(685)</b>

## NH Legislature Approval

“And generally speaking, do you approve or disapprove of the way the New Hampshire legislature is handling its job?”

	<u>Approve</u>	<u>Neutral/DK</u>	<u>Disapprove</u>	<u>(N=)</u>
<b>Feb '16</b>	<b>46%</b>	<b>22%</b>	<b>33%</b>	<b>(661)</b>
<b>Oct '15</b>	45%	18%	37%	(567)
<b>July '15</b>	40%	19%	42%	(517)
<b>May. '15</b>	42%	22%	36%	(561)
<b>Feb. '15</b>	51%	17%	32%	(501)
<b>Oct. '14</b>	46%	21%	33%	(656)
<b>July '14</b>	51%	20%	29%	(646)
<b>Apr. '14</b>	50%	17%	33%	(495)
<b>Jan. '14</b>	46%	26%	29%	(556)
<b>Oct. '13</b>	53%	25%	23%	(649)
<b>July '13</b>	51%	20%	29%	(504)
<b>Apr. '13</b>	42%	28%	30%	(498)
<b>Feb. '13</b>	43%	28%	30%	(571)
<b>Oct. 15 '12</b>	42%	13%	45%	(584)
<b>Oct. 4 '12</b>	41%	23%	36%	(634)
<b>Aug. '12</b>	45%	18%	37%	(566)
<b>Apr. '12</b>	40%	18%	42%	(533)
<b>Feb. '12</b>	42%	20%	38%	(522)

## Marijuana Legalization

“Do you support or oppose legalizing the possession of small amounts of marijuana for personal recreational use in New Hampshire similar to what the states of Colorado and Washington have done?”

*Asked in 2013-14 “Do you support or oppose legalizing the possession of small amounts of marijuana for personal recreational use in New Hampshire?”*

	<u>Feb. '13</u>	<u>Apr. '13</u>	<u>Oct. '13</u>	<u>Feb. '14</u>	<u>Apr. '14</u>	<u>Oct. '14</u>	<u>May '15</u>	<u>July '15</u>	<u>Feb '16</u>
Strongly Support	31%	32%	36%	35%	39%	34%	37%	45%	<b>41%</b>
Somewhat Support	17%	18%	15%	18%	16%	25%	17%	15%	<b>21%</b>
Neutral	6%	6%	7%	8%	6%	5%	6%	3%	<b>6%</b>
Somewhat Oppose	8%	7%	11%	14%	9%	10%	9%	11%	<b>11%</b>
Strongly Oppose	37%	36%	30%	24%	29%	25%	27%	24%	<b>19%</b>
Don't Know	1%	1%	1%	2%	2%	2%	3%	2%	<b>2%</b>
(N=)	(578)	(506)	(602)	(566)	(510)	(536)	(566)	(529)	<b>(686)</b>

“If small amounts of marijuana were legalized for personal use in New Hampshire, would you approve or disapprove of marijuana being sold at licensed retail outlets (*In Feb-April 2013 “state liquor stores”*) and taxed at levels similar to alcohol or tobacco?”

*Asked in October 2013 “The New Hampshire House is currently considering a bill that would make possession of small amounts of marijuana for personal recreational use legal. Retailers would be required to get a yearly license from the state in order to sell marijuana. The state would collect a 15 percent tax on all marijuana sales. Based on what you have heard would you support or oppose this bill?”*

	<u>Feb. '13</u>	<u>Apr. '13</u>	<u>Oct. '13</u>	<u>Feb. '14</u>	<u>Apr. '14</u>	<u>Oct. '14</u>	<u>May '15</u>	<u>July '15</u>	<u>Feb '16</u>
Strongly Approve/Support	40%	40%	44%	46%	50%	48%	46%	53%	<b>52%</b>
Somewhat Approve/Support	16%	17%	16%	19%	17%	24%	18%	17%	<b>20%</b>
Neutral	3%	5%	2%	4%	3%	2%	3%	3%	<b>1%</b>
Somewhat Disapprove/Oppose	6%	5%	8%	8%	6%	5%	7%	7%	<b>6%</b>
Strongly Disapprove/Oppose	33%	32%	28%	21%	24%	19%	22%	20%	<b>18%</b>
Don't Know	2%	3%	2%	2%	1%	1%	3%	1%	<b>3%</b>
(N=)	(577)	(503)	(602)	(564)	(508)	(540)	(564)	(529)	<b>(686)</b>

## Preference For Marijuana Laws in NH

“Which one of the following comes closest to what you would like to see the New Hampshire legislature do with marijuana laws –would you like lawmakers to legalize marijuana and tax it like alcohol ... decriminalize marijuana ... or keep marijuana laws as they are now?” ROTATE RESPONSES

	<u>Apr. '14</u>	<u>Oct. '14</u>	<u>May '15</u>	<u>July '15</u>	<u>Feb '16</u>
Legalize & Tax Marijuana	49%	52%	50%	51%	<b>52%</b>
Decriminalize Marijuana	18%	19%	18%	22%	<b>20%</b>
Keep Marijuana Laws As They Are Now	29%	27%	29%	24%	<b>23%</b>
Don't Know	5%	2%	3%	3%	<b>4%</b>
(N=)	(507)	(538)	(566)	(528)	<b>(683)</b>

### NH - Right Direction or Wrong Track

“Do you think things in New Hampshire are generally going in the right direction or are they seriously off on the wrong track?”

	<u>Right Direction</u>	<u>Wrong Track</u>	<u>Don't Know</u>	<u>(N=)</u>
<b>Feb '16</b>	<b>59%</b>	<b>29%</b>	<b>11%</b>	<b>(669)</b>
<b>Oct '15</b>	61%	28%	11%	(581)
<b>July '15</b>	57%	33%	11%	(522)
<b>May '15</b>	59%	31%	10%	(562)
<b>Feb. '15</b>	65%	27%	7%	(501)
<b>Oct. '14</b>	63%	28%	9%	(666)
<b>July '14</b>	69%	25%	6%	(656)
<b>Apr. '14</b>	62%	30%	8%	(505)
<b>Jan. '14</b>	64%	28%	8%	(570)
<b>Oct. '13</b>	70%	19%	11%	(646)
<b>July '13</b>	64%	24%	12%	(509)
<b>Apr. '13</b>	63%	26%	11%	(497)
<b>Feb. '13</b>	64%	26%	10%	(573)
<b>Oct. 15 '12</b>	56%	33%	11%	(576)
<b>Oct. 4 '12</b>	52%	39%	9%	(622)
<b>Aug. '12</b>	56%	35%	9%	(577)
<b>Apr. '12</b>	62%	32%	6%	(532)
<b>Feb. '12</b>	59%	30%	11%	(517)
<b>Oct. '11</b>	62%	26%	12%	(544)
<b>July '11</b>	61%	32%	7%	(503)
<b>Apr. '11</b>	54%	39%	7%	(491)
<b>Feb. '11</b>	65%	25%	11%	(517)
<b>Sept. '10</b>	61%	29%	10%	(511)
<b>July '10</b>	60%	32%	9%	(496)
<b>Apr. '10</b>	57%	34%	9%	(503)
<b>Feb. '10</b>	61%	31%	8%	(490)
<b>Oct. '09</b>	58%	30%	12%	(496)
<b>July '09</b>	55%	38%	7%	(557)
<b>Apr. '09</b>	64%	27%	9%	(497)
<b>Feb. '09</b>	60%	28%	12%	(605)
<b>Sept. '08</b>	73%	17%	10%	(535)
<b>July '08</b>	70%	21%	9%	(514)
<b>Apr. '08</b>	65%	27%	8%	(491)
<b>Feb. '08</b>	69%	20%	11%	(547)
<b>Sept. '07</b>	73%	17%	10%	(507)
<b>July '07</b>	76%	18%	6%	(500)
<b>Apr. '07</b>	76%	14%	9%	(506)
<b>Feb. '07</b>	78%	13%	8%	(524)
<b>Sept. '06</b>	79%	14%	7%	(509)
<b>July '06</b>	80%	13%	8%	(497)
<b>Apr. '06</b>	76%	13%	11%	(501)
<b>Feb. '06</b>	76%	14%	10%	(495)
<b>Oct. '05</b>	75%	17%	9%	(502)
<b>July '05</b>	75%	17%	8%	(494)
<b>May '05</b>	71%	15%	13%	(488)
<b>Feb. '05</b>	74%	13%	13%	(535)
<b>July '04</b>	59%	32%	9%	(503)
<b>Apr. '04</b>	65%	26%	9%	(530)
<b>Feb. '04</b>	61%	28%	11%	(500)
<b>Oct. '03</b>	67%	26%	7%	(485)
<b>Jun. '03</b>	62%	29%	9%	(510)

### Gubernatorial Approval

	<u>Approve</u> 51%	<u>Neutral</u> 19%	<u>Disapprove</u> 30%	<u>(N=)</u> 663
<b>STATEWIDE</b>				
Registered Democrat	78%	11%	11%	164
Registered Undeclared	52%	20%	28%	247
Registered Republican	33%	19%	48%	173
Democrat	74%	13%	13%	276
Independent	39%	32%	29%	132
Republican	33%	19%	48%	234
Liberal	68%	14%	17%	166
Moderate	60%	17%	23%	260
Conservative	27%	21%	52%	174
Likely 2016 Voter	53%	18%	29%	611
Non-Likely 2016 Voter	35%	30%	35%	52
Union household	59%	18%	22%	108
Non-union	50%	19%	31%	551
Read Union Leader	51%	14%	35%	122
Read Boston Globe	66%	12%	22%	72
Read Local Newspapers	54%	18%	28%	240
Watch WMUR	54%	15%	31%	393
Listen to NHPR	62%	17%	21%	193
Listen to Conserv. Radio	27%	22%	52%	49
18 to 34	47%	23%	30%	165
35 to 49	44%	21%	34%	172
50 to 64	56%	17%	27%	186
65 and over	62%	14%	23%	117
Male	47%	21%	32%	324
Female	56%	17%	27%	339
High school or less	45%	21%	35%	122
Some college	40%	21%	38%	174
College graduate	58%	17%	26%	214
Post-graduate	60%	19%	21%	150
Attend services 1 or more/week	49%	16%	35%	94
1-2 times a month	57%	13%	30%	76
Less often	50%	19%	31%	201
Never	52%	21%	27%	270
North Country	51%	20%	29%	57
Central / Lakes	60%	15%	26%	106
Connecticut Valley	42%	24%	34%	100
Mass Border	54%	19%	27%	171
Seacoast	49%	19%	32%	126
Manchester Area	51%	18%	31%	102
First Cong. Dist	48%	19%	32%	346
Second Cong. Dist	55%	19%	26%	317



**Most Important Problem Facing NH**

	<u>Education</u>	<u>Jobs/ Econ</u>	<u>Taxes</u>	<u>State Budget</u>	<u>Health Care</u>	<u>Drugs</u>	<u>Other</u>	<u>Not Sure</u>	<u>(N)</u>
<b>STATEWIDE</b>	<b>8%</b>	<b>14%</b>	<b>4%</b>	<b>1%</b>	<b>5%</b>	<b>40%</b>	<b>21%</b>	<b>7%</b>	<b>659</b>
Registered Democrat	10%	11%	4%	2%	6%	36%	23%	7%	159
Registered Undeclared	9%	15%	3%	2%	6%	40%	17%	8%	247
Registered Republican	7%	18%	5%	1%	3%	41%	20%	5%	173
Democrat	10%	11%	3%	1%	5%	39%	25%	6%	267
Independent	5%	12%	5%	2%	5%	41%	21%	9%	134
Republican	9%	17%	5%	1%	5%	39%	16%	8%	233
Liberal	11%	12%	3%	2%	8%	33%	24%	6%	157
Moderate	9%	13%	3%	1%	3%	45%	21%	5%	267
Conservative	3%	18%	5%	2%	4%	41%	19%	9%	170
Likely 2016 Voter	8%	14%	4%	1%	5%	41%	21%	7%	604
Non-Likely 2016 Voter	6%	14%	6%	3%	8%	33%	20%	10%	55
Union household	15%	15%	8%	2%	11%	30%	16%	2%	108
Non-union	7%	14%	3%	1%	4%	42%	21%	8%	545
Read Union Leader	9%	9%	5%	1%	5%	36%	28%	8%	125
Read Boston Globe	18%	19%	3%	2%	5%	27%	23%	4%	72
Read Local Newspapers	8%	18%	4%	3%	6%	34%	21%	6%	239
Watch WMUR	7%	13%	4%	2%	6%	46%	20%	4%	392
Listen to NHPR radio	12%	14%	6%	3%	6%	27%	25%	8%	196
Listen to Conserv. Radio	7%	19%	2%	1%	2%	30%	34%	5%	48
18 to 34	8%	9%	3%	0%	5%	47%	17%	11%	162
35 to 49	15%	14%	4%	1%	5%	32%	23%	5%	172
50 to 64	6%	15%	5%	1%	6%	43%	18%	6%	184
65 and over	2%	18%	5%	3%	4%	36%	26%	6%	116
Male	6%	16%	5%	2%	4%	38%	22%	8%	325
Female	10%	12%	3%	1%	6%	42%	19%	6%	334
High school or less	3%	12%	1%	1%	3%	44%	26%	9%	123
Some college	5%	10%	7%	2%	8%	41%	17%	9%	172
College graduate	9%	17%	3%	1%	3%	42%	19%	6%	210
Post-graduate	14%	16%	4%	1%	6%	32%	22%	5%	151
Attend services 1 or more/week	11%	18%	5%	4%	7%	29%	21%	5%	96
1-2 times a month	15%	9%	4%	1%	4%	43%	16%	8%	78
Less often	9%	14%	5%	2%	5%	43%	16%	6%	196
Never	5%	14%	3%	0%	5%	41%	25%	7%	268
North Country	3%	20%	2%	3%	4%	47%	18%	2%	56
Central / Lakes	6%	14%	1%	2%	4%	40%	26%	6%	110
Connecticut Valley	12%	11%	5%	2%	9%	31%	22%	7%	100
Mass Border	6%	19%	6%	1%	2%	36%	22%	9%	167
Seacoast	8%	9%	4%	2%	7%	44%	17%	9%	126
Manchester Area	11%	11%	3%	0%	4%	48%	17%	5%	101
First Cong. Dist	8%	14%	3%	1%	5%	43%	19%	7%	343
Second Cong. Dist	8%	14%	5%	2%	5%	37%	23%	7%	316

**Support/Oppose 30 Day Residency Period Law**

	<b>Strongly Support</b>	<b>Somewhat Support</b>	<b>Neutral</b>	<b>Somewhat Oppose</b>	<b>Strongly Oppose</b>	<b>DK Enough To Say</b>	<b>(N)</b>
<b>STATEWIDE</b>	<b>32%</b>	<b>15%</b>	<b>4%</b>	<b>9%</b>	<b>18%</b>	<b>23%</b>	<b>686</b>
Registered Democrat	14%	13%	3%	10%	32%	29%	164
Registered Undeclared	32%	13%	3%	10%	18%	23%	253
Registered Republican	46%	17%	4%	9%	8%	16%	180
Democrat	16%	14%	3%	12%	29%	26%	278
Independent	41%	14%	4%	9%	13%	19%	138
Republican	44%	16%	5%	7%	8%	21%	244
Liberal	11%	11%	4%	13%	35%	26%	166
Moderate	33%	18%	5%	12%	15%	19%	274
Conservative	50%	11%	3%	4%	10%	21%	177
Likely 2016 Voter	31%	14%	4%	10%	18%	23%	627
Non-Likely 2016 Voter	36%	18%	3%	7%	11%	26%	59
Union household	21%	12%	4%	12%	27%	24%	110
Non-union	34%	15%	4%	9%	15%	23%	570
Read Union Leader	31%	16%	5%	9%	16%	24%	126
Read Boston Globe	22%	15%	2%	11%	27%	23%	75
Read Local Newspapers	29%	11%	3%	9%	21%	27%	246
Watch WMUR	34%	13%	4%	10%	14%	25%	404
Listen to NHPR	23%	13%	3%	14%	30%	18%	199
Listen to Conserv. Radio	50%	15%	8%	7%	5%	15%	49
18 to 34	22%	20%	3%	13%	19%	23%	175
35 to 49	32%	9%	5%	8%	19%	27%	179
50 to 64	37%	15%	3%	10%	17%	18%	190
65 and over	34%	13%	4%	6%	17%	26%	118
Male	39%	15%	4%	8%	14%	20%	335
Female	24%	14%	3%	11%	21%	27%	351
High school or less	36%	13%	6%	6%	10%	30%	128
Some college	35%	19%	4%	8%	11%	23%	181
College graduate	33%	11%	2%	14%	18%	22%	220
Post-graduate	21%	17%	4%	8%	31%	19%	153
Attend services 1 or more/week	39%	15%	3%	6%	14%	22%	96
1-2 times a month	28%	12%	3%	8%	19%	30%	80
Less often	30%	14%	5%	9%	18%	25%	204
Never	31%	14%	3%	12%	20%	20%	282
North Country	27%	16%	4%	6%	22%	25%	58
Central / Lakes	34%	9%	2%	12%	16%	27%	111
Connecticut Valley	25%	12%	4%	13%	15%	31%	102
Mass Border	39%	14%	4%	6%	17%	20%	177
Seacoast	28%	19%	6%	10%	16%	20%	131
Manchester Area	29%	17%	2%	11%	21%	20%	108
First Cong. Dist	31%	16%	5%	9%	16%	23%	357
Second Cong. Dist	32%	13%	2%	10%	20%	23%	329

**Favor/Oppose Universal Background Checks**

	<b>Strongly Favor</b>	<b>Favor Somewhat</b>	<b>Neutral</b>	<b>Oppose Somewhat</b>	<b>Strongly Oppose</b>	<b>Don't Know</b>	<b>(N)</b>
<b>STATEWIDE</b>	<b>75%</b>	<b>9%</b>	<b>1%</b>	<b>3%</b>	<b>7%</b>	<b>4%</b>	<b>685</b>
Registered Democrat	94%	1%	0%	1%	0%	3%	165
Registered Undeclared	74%	9%	2%	5%	9%	2%	251
Registered Republican	63%	16%	1%	3%	11%	6%	180
Democrat	91%	3%	0%	1%	2%	4%	278
Independent	67%	11%	2%	7%	12%	2%	138
Republican	61%	15%	2%	5%	11%	5%	242
Liberal	91%	6%	0%	0%	0%	3%	166
Moderate	80%	8%	1%	3%	6%	3%	274
Conservative	57%	15%	3%	5%	13%	7%	174
Likely 2016 Voter	76%	9%	1%	3%	7%	4%	626
Non-Likely 2016 Voter	64%	11%	0%	8%	9%	9%	59
Union household	80%	12%	3%	1%	3%	2%	110
Non-union	74%	9%	1%	4%	8%	5%	569
Read Union Leader	74%	11%	1%	3%	8%	4%	127
Read Boston Globe	91%	6%	1%	1%	1%	0%	75
Read Local Newspapers	76%	8%	1%	4%	6%	4%	246
Watch WMUR	77%	9%	1%	3%	6%	3%	404
Listen to NHPR	86%	5%	1%	2%	3%	4%	199
Listen to Conserv. Radio	62%	8%	1%	1%	19%	8%	49
18 to 34	70%	13%	2%	5%	4%	6%	175
35 to 49	71%	10%	0%	4%	12%	3%	177
50 to 64	81%	5%	1%	4%	8%	1%	190
65 and over	78%	9%	2%	1%	2%	7%	118
Male	64%	14%	2%	6%	9%	5%	335
Female	85%	5%	0%	1%	5%	3%	349
High school or less	72%	9%	4%	4%	6%	5%	128
Some college	62%	15%	0%	7%	11%	4%	181
College graduate	78%	8%	0%	2%	6%	5%	219
Post-graduate	86%	4%	1%	1%	5%	3%	153
Attend services 1 or more/week	71%	15%	1%	4%	8%	2%	96
1-2 times a month	75%	11%	2%	3%	8%	2%	80
Less often	77%	8%	1%	4%	6%	4%	203
Never	77%	7%	1%	3%	8%	5%	281
North Country	76%	8%	0%	3%	6%	6%	58
Central / Lakes	77%	8%	1%	4%	9%	1%	111
Connecticut Valley	74%	9%	0%	4%	6%	7%	102
Mass Border	75%	6%	3%	3%	10%	3%	176
Seacoast	72%	16%	2%	2%	3%	5%	129
Manchester Area	74%	11%	1%	6%	5%	4%	108
First Cong. Dist	74%	11%	2%	3%	7%	4%	355
Second Cong. Dist	75%	8%	1%	4%	7%	5%	329

**Seriousness of Heroin Problem in New Hampshire**

	<b>Very Serious</b>	<b>Somewhat Serious</b>	<b>Not Very Serious</b>	<b>Not Serious At All</b>	<b>Don't Know/ Not Sure</b>	<b>(N)</b>
<b>STATEWIDE</b>	<b>88%</b>	<b>9%</b>	<b>2%</b>	<b>0%</b>	<b>1%</b>	<b>686</b>
Registered Democrat	91%	7%	0%	0%	2%	165
Registered Undeclared	85%	11%	3%	1%	1%	253
Registered Republican	90%	8%	1%	0%	1%	180
Democrat	87%	10%	2%	0%	1%	278
Independent	90%	7%	3%	0%	0%	138
Republican	88%	9%	1%	1%	1%	244
Liberal	89%	8%	0%	0%	2%	166
Moderate	85%	13%	2%	0%	0%	274
Conservative	91%	6%	1%	0%	1%	176
Likely 2016 Voter	88%	9%	2%	0%	1%	627
Non-Likely 2016 Voter	80%	9%	4%	3%	4%	59
Union household	87%	9%	3%	1%	1%	110
Non-union	88%	9%	1%	0%	1%	570
Read Union Leader	88%	9%	1%	0%	2%	127
Read Boston Globe	88%	12%	1%	0%	0%	75
Read Local Newspapers	89%	7%	2%	1%	1%	246
Watch WMUR	90%	7%	1%	0%	1%	404
Listen to NHPR	89%	9%	0%	1%	1%	199
Listen to Conserv. Radio	91%	5%	4%	0%	0%	49
18 to 34	85%	12%	3%	0%	1%	175
35 to 49	88%	7%	2%	1%	1%	179
50 to 64	89%	9%	1%	0%	0%	189
65 and over	90%	7%	1%	0%	3%	119
Male	84%	11%	2%	1%	2%	335
Female	91%	7%	1%	0%	1%	351
High school or less	91%	7%	0%	0%	2%	127
Some college	87%	8%	4%	1%	0%	181
College graduate	87%	10%	2%	0%	1%	221
Post-graduate	87%	10%	1%	0%	2%	153
Attend services 1 or more/week	92%	7%	0%	0%	1%	96
1-2 times a month	91%	9%	0%	0%	0%	80
Less often	87%	10%	1%	0%	2%	204
Never	86%	9%	3%	1%	1%	282
North Country	86%	11%	3%	0%	0%	58
Central / Lakes	91%	4%	2%	1%	2%	110
Connecticut Valley	87%	11%	2%	0%	0%	102
Mass Border	85%	10%	1%	0%	4%	177
Seacoast	87%	10%	2%	1%	0%	131
Manchester Area	90%	9%	1%	0%	1%	108
First Cong. Dist	88%	9%	2%	0%	1%	358
Second Cong. Dist	88%	9%	1%	0%	2%	329

### Know Someone Who Has Abused Heroin

	<u>Yes</u>	<u>No</u>	<u>Don't Know</u>	<u>(N)</u>
<b>STATEWIDE</b>	<b>52%</b>	<b>47%</b>	<b>1%</b>	<b>686</b>
Registered Democrat	48%	49%	3%	165
Registered Undeclared	49%	51%	0%	253
Registered Republican	50%	49%	1%	180
Democrat	47%	51%	2%	278
Independent	64%	36%	0%	138
Republican	50%	50%	1%	244
Liberal	50%	48%	1%	166
Moderate	52%	46%	1%	274
Conservative	49%	50%	1%	176
Likely 2016 Voter	51%	48%	1%	627
Non-Likely 2016 Voter	61%	35%	4%	59
Union household	50%	49%	1%	110
Non-union	52%	47%	1%	570
Read Union Leader	53%	45%	3%	127
Read Boston Globe	52%	48%	0%	75
Read Local Newspapers	48%	50%	2%	246
Watch WMUR	53%	45%	1%	404
Listen to NHPR	44%	54%	2%	199
Listen to Conserv. Radio	50%	48%	2%	49
18 to 34	72%	27%	1%	175
35 to 49	55%	44%	1%	179
50 to 64	43%	55%	2%	189
65 and over	32%	66%	2%	119
Male	48%	51%	1%	335
Female	55%	44%	1%	351
High school or less	53%	46%	1%	127
Some college	62%	36%	2%	181
College graduate	48%	49%	2%	221
Post-graduate	42%	58%	0%	153
Attend services 1 or more/week	50%	47%	2%	96
1-2 times a month	47%	52%	1%	80
Less often	53%	46%	1%	204
Never	52%	47%	1%	282
North Country	40%	60%	0%	58
Central / Lakes	48%	50%	2%	110
Connecticut Valley	61%	39%	1%	102
Mass Border	47%	51%	2%	177
Seacoast	54%	45%	1%	131
Manchester Area	57%	42%	1%	108
First Cong. Dist	53%	46%	1%	358
Second Cong. Dist	50%	48%	2%	329

**Should State & Local Government Spend More Trying To Reduce Heroin Abuse**

	<u>Spend More To Reduce Heroin Abuse</u>	<u>Spending Enough Now</u>	<u>Don't Know Enough To Say</u>	<u>(N)</u>
<b>STATEWIDE</b>	<b>52%</b>	<b>18%</b>	<b>30%</b>	<b>681</b>
Registered Democrat	62%	10%	28%	164
Registered Undeclared	46%	21%	33%	253
Registered Republican	52%	22%	26%	178
Democrat	58%	13%	29%	277
Independent	48%	20%	32%	138
Republican	47%	24%	29%	242
Liberal	67%	11%	22%	166
Moderate	48%	19%	32%	273
Conservative	47%	22%	31%	175
Likely 2016 Voter	53%	18%	29%	623
Non-Likely 2016 Voter	38%	26%	35%	58
Union household	53%	21%	26%	110
Non-union	52%	18%	30%	565
Read Union Leader	46%	27%	27%	126
Read Boston Globe	68%	12%	20%	75
Read Local Newspapers	50%	22%	29%	245
Watch WMUR	54%	19%	27%	403
Listen to NHPR	58%	13%	29%	198
Listen to Conserv. Radio	47%	29%	24%	48
18 to 34	47%	20%	32%	175
35 to 49	54%	22%	24%	176
50 to 64	51%	19%	30%	188
65 and over	56%	10%	34%	118
Male	46%	23%	31%	331
Female	57%	14%	29%	350
High school or less	49%	25%	26%	127
Some college	53%	19%	28%	180
College graduate	52%	17%	31%	218
Post-graduate	53%	15%	32%	152
Attend services 1 or more/week	53%	16%	31%	96
1-2 times a month	61%	14%	25%	79
Less often	49%	24%	28%	203
Never	51%	17%	32%	279
North Country	41%	25%	34%	57
Central / Lakes	55%	20%	25%	110
Connecticut Valley	56%	16%	28%	100
Mass Border	49%	19%	32%	176
Seacoast	53%	14%	33%	130
Manchester Area	53%	20%	28%	108
First Cong. Dist	52%	18%	31%	356
Second Cong. Dist	52%	19%	29%	325

**Support/Oppose Marijuana Legalization**

	<b>Strongly Support</b>	<b>Somewhat Support</b>	<b>Neutral</b>	<b>Somewhat Oppose</b>	<b>Strongly Oppose</b>	<b>Don't Know/Not Sure</b>	<b>(N)</b>
<b>STATEWIDE</b>	<b>41%</b>	<b>21%</b>	<b>6%</b>	<b>11%</b>	<b>19%</b>	<b>2%</b>	<b>686</b>
Registered Democrat	45%	18%	7%	15%	14%	2%	165
Registered Undeclared	48%	22%	6%	8%	15%	1%	253
Registered Republican	27%	20%	5%	13%	32%	2%	180
Democrat	51%	19%	7%	10%	11%	2%	278
Independent	47%	22%	6%	9%	15%	1%	138
Republican	28%	24%	3%	13%	30%	2%	244
Liberal	55%	21%	6%	7%	8%	2%	166
Moderate	44%	21%	7%	13%	15%	0%	274
Conservative	25%	23%	5%	9%	36%	3%	177
Likely 2016 Voter	42%	21%	6%	11%	19%	1%	627
Non-Likely 2016 Voter	35%	29%	2%	9%	17%	9%	59
Union household	47%	25%	6%	8%	13%	1%	110
Non-union	40%	21%	5%	11%	20%	2%	570
Read Union Leader	39%	18%	4%	15%	20%	3%	127
Read Boston Globe	36%	26%	10%	13%	13%	2%	75
Read Local Newspapers	41%	19%	6%	12%	20%	2%	245
Watch WMUR	40%	21%	6%	9%	22%	2%	404
Listen to NHPR	39%	24%	6%	11%	17%	2%	199
Listen to Conserv. Radio	27%	21%	3%	10%	39%	0%	49
18 to 34	59%	22%	3%	9%	6%	2%	175
35 to 49	39%	21%	5%	12%	20%	2%	179
50 to 64	41%	24%	6%	11%	18%	1%	190
65 and over	25%	18%	8%	11%	36%	2%	118
Male	40%	22%	7%	11%	18%	3%	335
Female	42%	21%	5%	11%	20%	1%	351
High school or less	48%	22%	5%	8%	15%	2%	127
Some college	47%	20%	4%	7%	19%	2%	181
College graduate	41%	21%	6%	12%	19%	1%	221
Post-graduate	30%	23%	8%	16%	21%	3%	153
Attend services 1 or more/week	18%	14%	2%	19%	44%	2%	96
1-2 times a month	34%	23%	3%	18%	21%	2%	80
Less often	39%	25%	6%	10%	18%	2%	204
Never	55%	21%	7%	7%	9%	1%	282
North Country	54%	11%	6%	8%	21%	0%	58
Central / Lakes	41%	17%	6%	15%	20%	0%	110
Connecticut Valley	43%	22%	6%	6%	23%	0%	102
Mass Border	35%	27%	9%	9%	19%	2%	177
Seacoast	39%	26%	3%	13%	15%	4%	131
Manchester Area	46%	15%	1%	15%	19%	4%	108
First Cong. Dist	40%	23%	4%	12%	18%	3%	358
Second Cong. Dist	43%	19%	7%	10%	20%	1%	329

**Approve/Disapprove Marijuana Being Sold at Liquor Stores**

	<u>Strongly Approve</u>	<u>Somewhat Approve</u>	<u>Neutral</u>	<u>Somewhat Disapprove</u>	<u>Strongly Disapprove</u>	<u>Don't Know/ Not Sure</u>	<u>(N)</u>
<b>STATEWIDE</b>	<b>52%</b>	<b>20%</b>	<b>1%</b>	<b>6%</b>	<b>18%</b>	<b>3%</b>	<b>686</b>
Registered Democrat	54%	20%	1%	9%	14%	1%	165
Registered Undeclared	57%	21%	1%	5%	13%	3%	253
Registered Republican	40%	17%	2%	6%	30%	5%	179
Democrat	59%	21%	1%	7%	11%	1%	278
Independent	59%	21%	0%	5%	12%	3%	138
Republican	40%	20%	2%	6%	27%	5%	243
Liberal	67%	19%	0%	5%	7%	2%	166
Moderate	54%	21%	1%	7%	16%	1%	274
Conservative	35%	19%	2%	6%	32%	6%	176
Likely 2016 Voter	52%	20%	2%	6%	18%	3%	627
Non-Likely 2016 Voter	50%	26%	0%	11%	10%	3%	59
Union household	62%	18%	1%	5%	13%	0%	110
Non-union	50%	21%	2%	6%	19%	3%	570
Read Union Leade	44%	20%	2%	10%	19%	4%	126
Read Boston Globe	53%	23%	1%	5%	17%	2%	75
Read Local Newspapers	54%	17%	1%	6%	18%	4%	246
Watch WMUR	49%	22%	2%	4%	20%	3%	405
Listen to NHPR	55%	20%	2%	6%	14%	2%	199
Listen to Conserv. Radio	43%	12%	2%	4%	32%	6%	48
18 to 34	71%	15%	0%	7%	5%	3%	175
35 to 49	50%	21%	1%	7%	19%	2%	179
50 to 64	49%	22%	2%	5%	18%	3%	190
65 and over	34%	24%	3%	5%	30%	4%	119
Male	54%	19%	2%	6%	16%	3%	336
Female	49%	22%	1%	6%	19%	3%	350
High school or less	51%	21%	1%	5%	17%	5%	127
Some college	59%	17%	2%	4%	16%	1%	181
College graduate	51%	18%	2%	8%	18%	3%	221
Post-graduate	45%	26%	0%	6%	18%	3%	153
Attend services 1 or more/week	26%	18%	2%	12%	35%	6%	95
1-2 times a month	44%	27%	1%	5%	17%	6%	80
Less often	52%	22%	1%	6%	16%	2%	204
Never	64%	18%	1%	5%	11%	1%	282
North Country	59%	18%	2%	1%	18%	2%	58
Central / Lakes	47%	25%	3%	6%	18%	3%	111
Connecticut Valley	51%	20%	2%	4%	21%	2%	102
Mass Border	51%	17%	2%	7%	19%	4%	177
Seacoast	54%	24%	0%	7%	12%	2%	131
Manchester Area	51%	17%	1%	8%	18%	4%	107
First Cong. Dist	53%	19%	2%	6%	17%	3%	357
Second Cong. Dist	50%	21%	1%	7%	18%	3%	329



### What Should Legislature Do With Marijuana Laws?

	<u>Legalize And Tax</u>	<u>Decriminalize</u>	<u>Keep Laws As They Are Now</u>	<u>Don't Know/ Not Sure</u>	<u>(N)</u>
<b>STATEWIDE</b>	<b>52%</b>	<b>20%</b>	<b>23%</b>	<b>4%</b>	<b>683</b>
Registered Democrat	48%	26%	21%	5%	165
Registered Undeclared	60%	19%	18%	4%	253
Registered Republican	41%	20%	35%	5%	179
Democrat	56%	23%	17%	4%	277
Independent	61%	16%	19%	4%	138
Republican	44%	19%	33%	4%	243
Liberal	60%	23%	13%	4%	166
Moderate	56%	19%	21%	4%	271
Conservative	38%	21%	36%	5%	176
Likely 2016 Voter	53%	20%	23%	4%	625
Non-Likely 2016 Voter	52%	14%	28%	6%	57
Union household	63%	19%	14%	4%	110
Non-union	50%	20%	25%	4%	567
Read Union Leader	48%	22%	26%	3%	124
Read Boston Globe	50%	27%	16%	8%	75
Read Local Newspapers	50%	20%	25%	4%	246
Watch WMUR	51%	19%	26%	4%	404
Listen to NHPR	52%	23%	21%	4%	199
Listen to Conserv. Radio	40%	19%	41%	1%	48
18 to 34	70%	15%	13%	2%	173
35 to 49	50%	20%	25%	4%	179
50 to 64	49%	23%	23%	5%	190
65 and over	38%	22%	33%	7%	118
Male	54%	18%	24%	4%	334
Female	51%	21%	22%	5%	348
High school or less	61%	16%	21%	3%	125
Some college	57%	15%	26%	2%	181
College graduate	49%	25%	21%	5%	220
Post-graduate	45%	22%	25%	7%	153
Attend services 1 or more/week	24%	19%	51%	6%	95
1-2 times a month	46%	18%	29%	7%	80
Less often	52%	23%	20%	5%	204
Never	65%	19%	14%	2%	280
North Country	60%	18%	20%	2%	57
Central / Lakes	51%	15%	30%	4%	111
Connecticut Valley	54%	20%	24%	2%	101
Mass Border	50%	24%	19%	8%	177
Seacoast	58%	16%	23%	3%	131
Manchester Area	46%	25%	25%	4%	107
First Cong. Dist	52%	19%	24%	5%	357
Second Cong. Dist	53%	21%	22%	4%	326

### Are Things in NH on Right/Wrong Track

	<u>Right Direction</u>	<u>Wrong Track</u>	<u>Don't Know</u>	<u>(N=)</u>
<b>STATEWIDE</b>	<b>59%</b>	<b>29%</b>	<b>11%</b>	<b>669</b>
Registered Democrat	69%	22%	9%	162
Registered Undeclared	58%	29%	13%	247
Registered Republican	51%	37%	12%	175
Democrat	69%	23%	9%	270
Independent	52%	36%	11%	136
Republican	53%	32%	15%	239
Liberal	69%	25%	6%	160
Moderate	67%	25%	9%	268
Conservative	44%	38%	19%	175
Likely 2016 Voter	60%	29%	11%	612
Non-Likely 2016 Voter	55%	35%	10%	57
Union household	63%	27%	10%	105
Non-union	59%	30%	12%	558
Read Union Leader	56%	30%	13%	123
Read Boston Globe	66%	27%	7%	73
Read Local Newspapers	60%	30%	10%	241
Watch WMUR	57%	31%	12%	398
Listen to NHPR radio	61%	28%	11%	195
Listen to Conserv. Radio	38%	50%	11%	48
18 to 34	65%	23%	12%	168
35 to 49	55%	34%	10%	174
50 to 64	56%	33%	12%	186
65 and over	62%	24%	13%	115
Male	61%	29%	10%	328
Female	58%	30%	12%	341
High school or less	57%	33%	10%	127
Some college	51%	36%	12%	175
College graduate	63%	25%	12%	214
Post-graduate	64%	26%	11%	149
Attend services 1 or more/week	52%	36%	12%	96
1-2 times a month	54%	29%	17%	79
Less often	66%	23%	11%	195
Never	57%	32%	10%	275
North Country	59%	38%	3%	54
Central / Lakes	60%	32%	8%	107
Connecticut Valley	56%	30%	14%	100
Mass Border	60%	30%	10%	176
Seacoast	65%	24%	11%	126
Manchester Area	55%	26%	19%	105
First Cong. Dist	59%	29%	12%	347
Second Cong. Dist	60%	30%	10%	322

### Legislature Approval

	<u>Approve</u>	<u>Neutral/DK</u>	<u>Disapprove</u>	<u>(N=)</u>
<b>STATEWIDE</b>	<b>46%</b>	<b>22%</b>	<b>33%</b>	<b>661</b>
Registered Democrat	48%	14%	38%	158
Registered Undeclared	47%	21%	32%	248
Registered Republican	47%	22%	32%	174
Democrat	48%	17%	35%	270
Independent	37%	25%	37%	132
Republican	50%	24%	26%	237
Liberal	44%	17%	39%	162
Moderate	48%	22%	30%	266
Conservative	46%	20%	34%	173
Likely 2016 Voter	46%	21%	32%	610
Non-Likely 2016 Voter	40%	24%	36%	52
Union household	40%	17%	43%	110
Non-union	47%	22%	31%	547
Read Union Leader	43%	25%	33%	121
Read Boston Globe	38%	14%	48%	72
Read Local Newspapers	44%	19%	37%	240
Watch WMUR	47%	21%	32%	391
Listen to NHPR radio	40%	20%	40%	191
Listen to Conserv. Radio	49%	17%	34%	48
18 to 34	43%	26%	31%	165
35 to 49	42%	23%	35%	175
50 to 64	50%	19%	31%	181
65 and over	53%	16%	31%	116
Male	49%	21%	30%	321
Female	43%	22%	35%	341
High school or less	49%	26%	25%	120
Some college	44%	22%	34%	176
College graduate	48%	19%	32%	212
Post-graduate	42%	20%	38%	150
Attend services 1 or more/week	50%	21%	29%	91
1-2 times a month	46%	21%	34%	79
Less often	49%	21%	30%	202
Never	42%	22%	36%	270
North Country	47%	11%	41%	58
Central / Lakes	41%	21%	38%	105
Connecticut Valley	44%	26%	29%	98
Mass Border	48%	22%	30%	172
Seacoast	48%	22%	30%	125
Manchester Area	44%	22%	34%	103
First Cong. Dist	45%	23%	32%	346
Second Cong. Dist	47%	20%	34%	315