

January 20, 2016

**TRUMP STILL ON TOP IN NH, BIG BATTLE FOR SECOND, MOST VOTERS STILL UNDECIDED**

By: Andrew E. Smith, Ph.D.  
Zachary S. Azem, M.A.  
UNH Survey Center

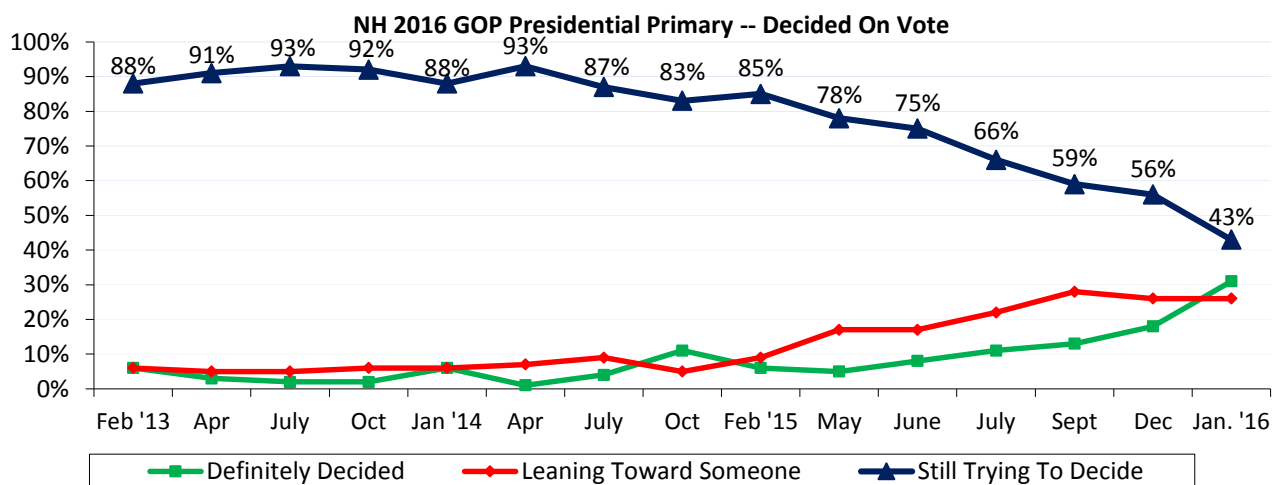
andrew.smith@unh.edu  
603-862-2226  
www.unh.edu/survey-center

DURHAM, NH – Donald Trump has maintained his double digit lead in the New Hampshire Primary race while the rest of the field remains tightly packed. However, Trump continues to be the candidate that New Hampshire Republicans say they are least likely to vote for. Only thirty-one percent of New Hampshire Republican Primary voters say they have firmly decided who they will vote for in the Primary.

These findings are based on the latest **CNN/WMUR New Hampshire Primary Poll**,\* conducted by the University of New Hampshire Survey Center. Nine hundred and seventy-four (974) randomly selected New Hampshire adults were interviewed by landline and cellular telephone between January 13 and January 18, 2015. The margin of sampling error is +/- 3.1 percent. Included were four hundred and fourteen (414) likely 2016 Republican Primary voters (MSE = +/-4.8) and four hundred and twenty-one (421) likely 2016 Democratic Primary voters (MSE = +/-4.8).

**NH Republicans Still Undecided**

New Hampshire primary voters usually decide who they will vote for in the last weeks, or days of the campaign and given the number of candidates in the 2016 field, it is no surprise that few likely Republican primary voters have made up their minds about who they will vote for. Currently, only 31% of likely Republican Primary voters say they have definitely decided who they will support, 26% are leaning toward a candidate, and 43% are still trying to decide.



\* We ask that this copyrighted information be referred to as *the CNN/WMUR New Hampshire Primary Poll*, sponsored by WMUR-TV and CNN, and conducted by the University of New Hampshire Survey Center.

The Republican electorate is much more interested in the 2016 primary than it was at a similar point in 2007, the last time both parties had contested primaries. Currently, 59% of likely Republican primary voters say they are extremely interested in the election, 30% are very interested, and 11% are only somewhat interested or not very interested. By comparison, in December 2007, only 34% of likely Republican primary voters said they were extremely interested in the 2008 primary, 46% were very interested, and 20% were only somewhat interested or not very interested. Currently, 48% of undeclared voters who can vote in either primary, say they will vote in the Democratic primary while 45% say they will vote in the Republican primary.

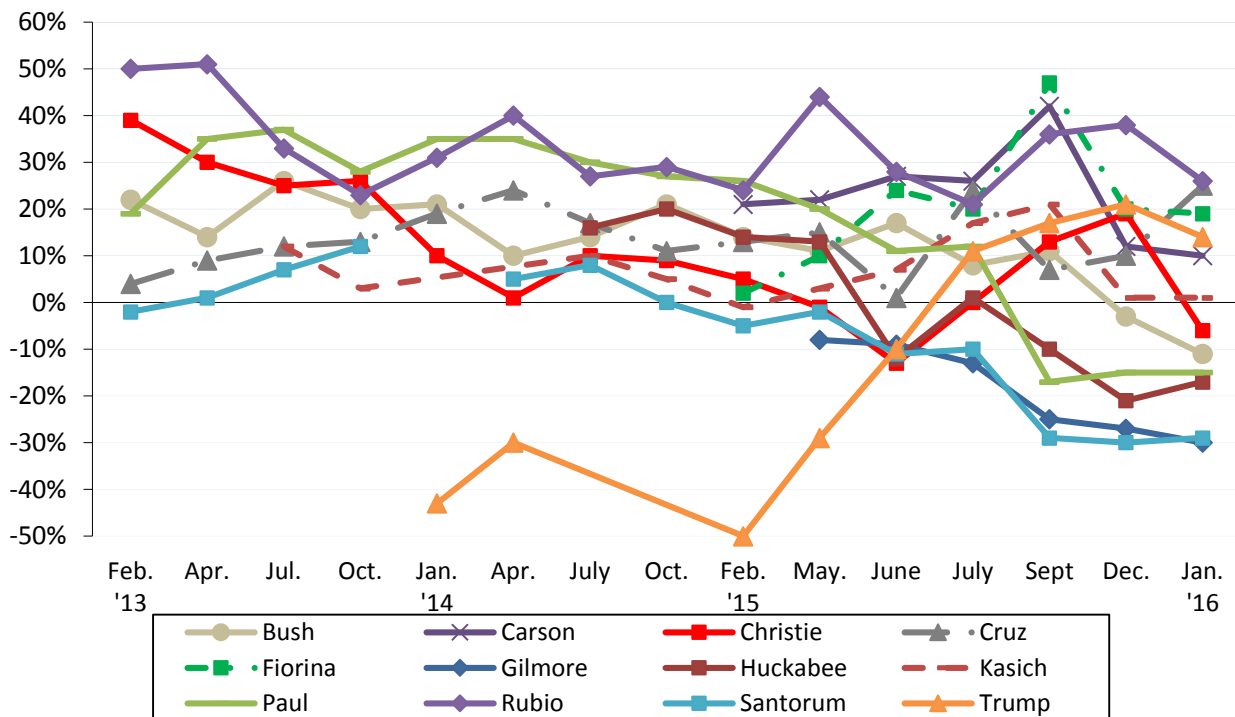
### GOP Favorability Ratings

One of the main problems Republican candidates are facing in this election cycle is that their net favorability ratings (the percentage who have a favorable opinion of him or her minus the percentage who have an unfavorable opinion) are quite low among their own voters, especially when compared to their Democratic counterparts. Currently Bernie Sanders has a +84% net favorability rating and Hillary Clinton has a +39% net favorability rating. Leading the GOP field in net favorability is Florida senator Marco Rubio. Currently 58% have a favorable opinion of Rubio, 32% have an unfavorable opinion and 11% are neutral or don't know enough about him to say. Rubio's net favorability rating is +26%, down from +38% in December. Other GOP candidates with positive net favorability ratings are Texas Senator Ted Cruz (+25%), businesswoman Carly Fiorina (+19%), businessman Donald Trump (+14%), neurosurgeon Ben Carson (+10%) and Ohio governor John Kasich (+1%).

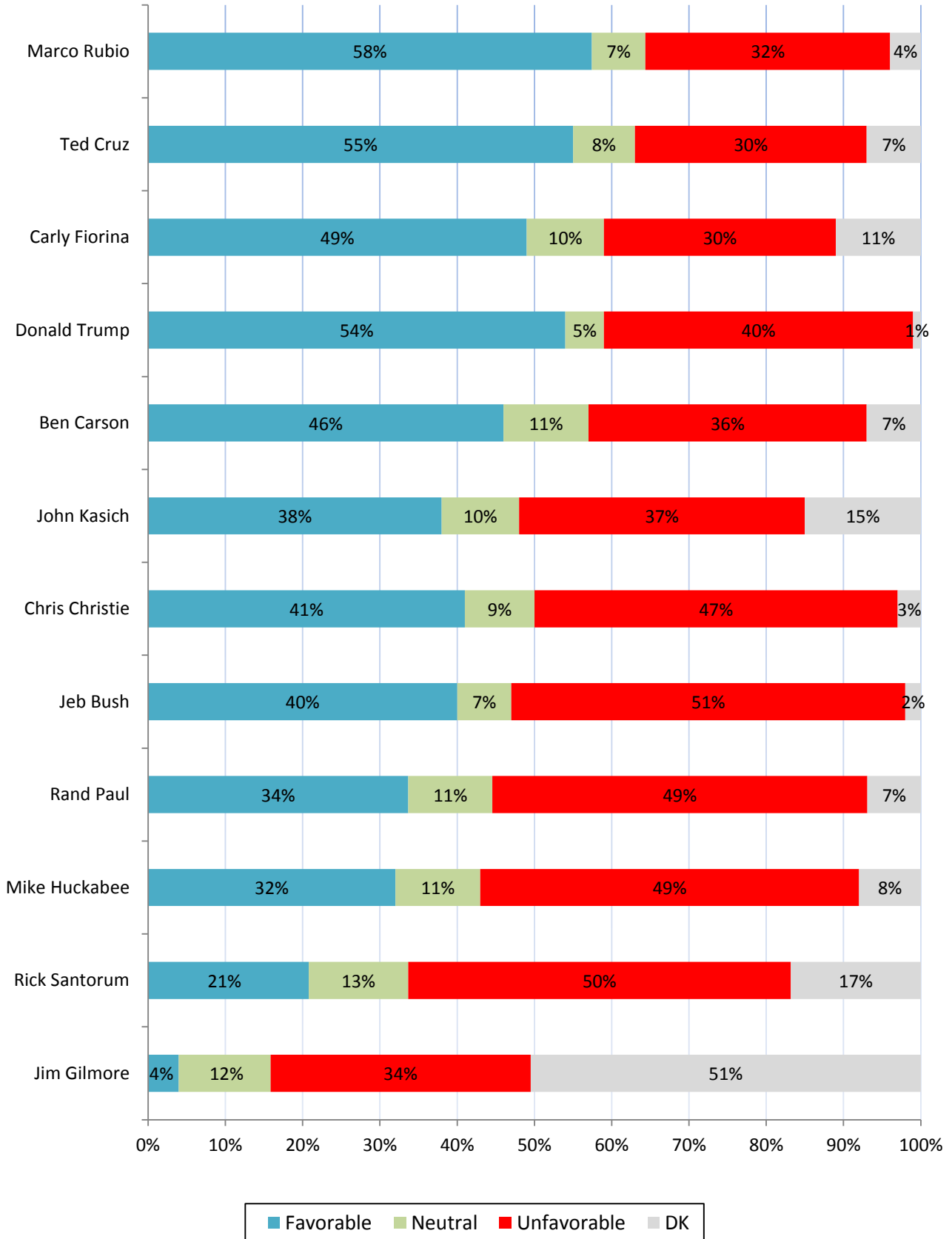
Candidates with negative net favorability ratings are New Jersey governor Chris Christie (-6%), former Florida governor Jeb Bush (-11%), Kentucky senator Rand Paul (-15%), former Arkansas governor Mike Huckabee (-17%), former Pennsylvania senator Rick Santorum (-29%), and former Virginia governor Jim Gilmore (-30%) have negative net favorability ratings.

Christie (from +19% to -6%) has seen his net favorability rating drop significantly since December while Cruz (from +10% to +25%) has seen his net favorability rating increase since December.

NH 2016 GOP Presidential Primary -- Net Favorability Ratings



Favorability Ratings - NH GOP Presidential Candidates - January 2016

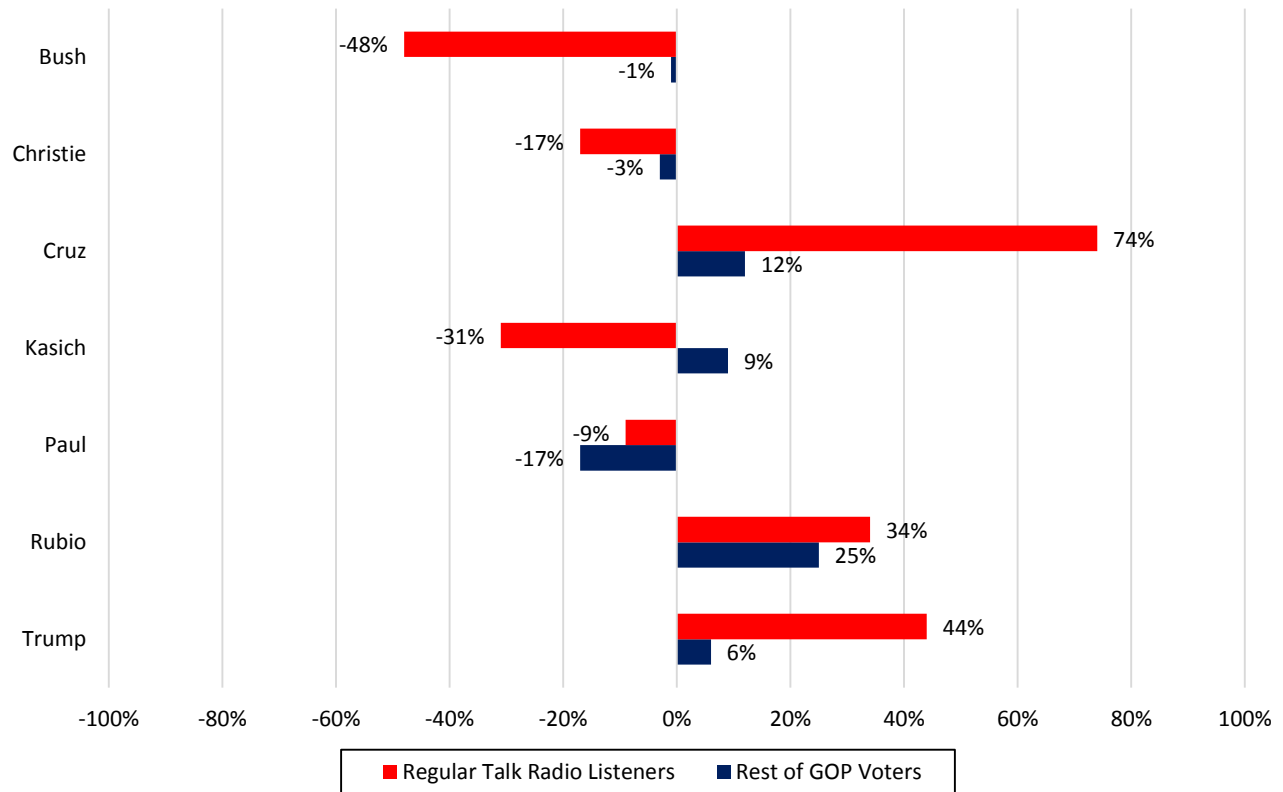


## Influence of Conservative Talk Radio on New Hampshire Primary

Regular listeners of conservative talk radio make up approximately 20% of the Republic primary electorate and they have significantly different views of the candidates than do non-listeners. Among regular conservative talk radio listeners, Cruz (+74%) is the most popular candidate, followed by Trump (+44%) and Rubio (+34%). But among the rest of GOP primary voters, Rubio has a +25% net favorability rating while Cruz (+12%) and Trump (+6%) are significantly less popular.

Candidates like Bush (-48%), Kasich (-31%), and Christie (-17%) are very unpopular among talk radio listeners, while all three are somewhat more liked among the rest of GOP primary voters.

**Favorability Ratings - Regular Talk Radio Listeners vs. Rest of GOP Voters - Jan. 2016**



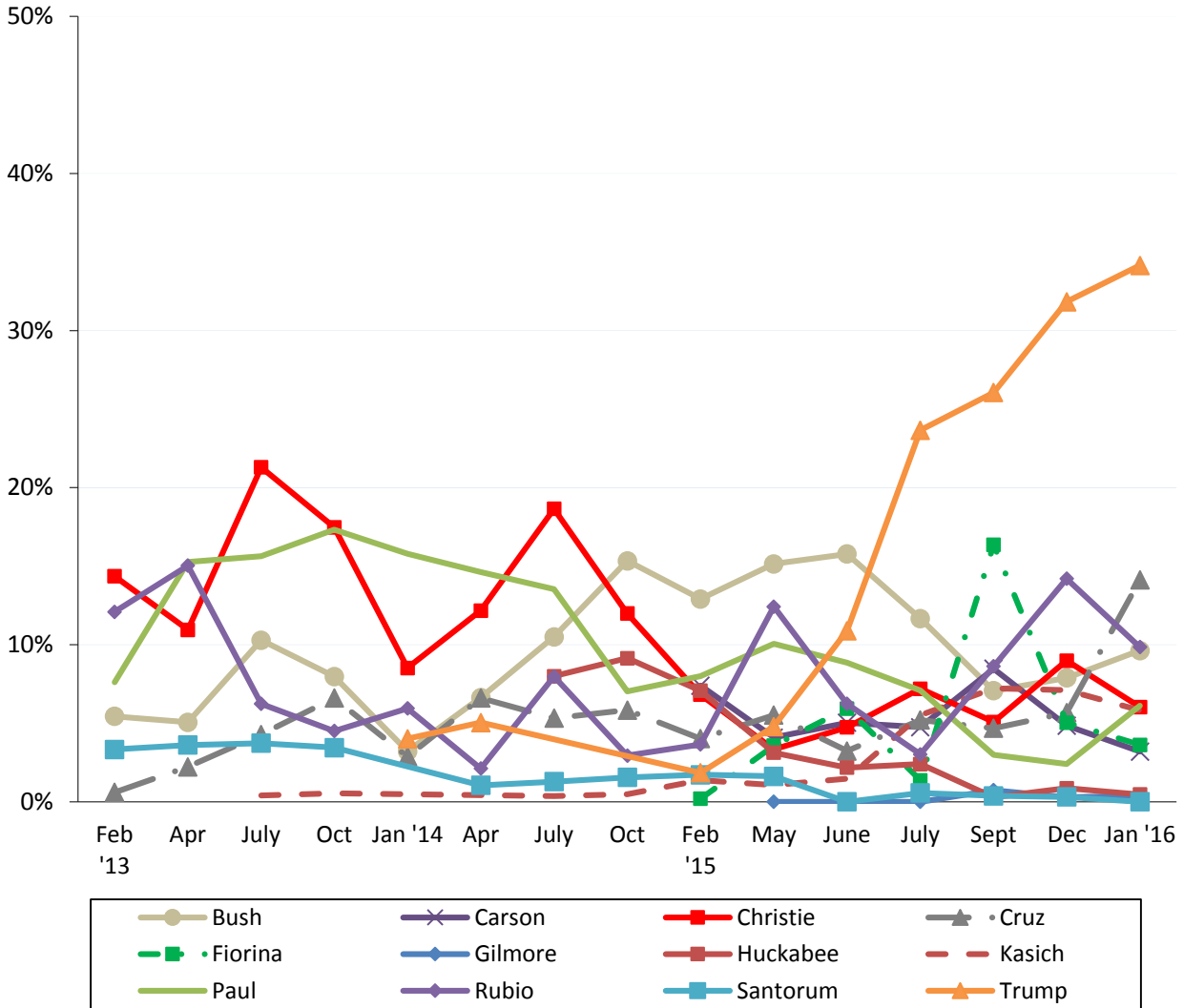
	Regular Talk Radio Listeners		All Other GOP Voters	
	Dec. '15	Jan. '16	Dec. '15	Jan. '16
<b>Jeb Bush</b>	-32%	-48%	+5%	-1%
<b>Chris Christie</b>	+18%	-17%	+20%	-3%
<b>Ted Cruz</b>	+66%	+74%	-7%	+12%
<b>John Kasich</b>	-32%	-31%	+12%	+9%
<b>Rand Paul</b>	-21%	-9%	-13%	-17%
<b>Marco Rubio</b>	+38%	+34%	+37%	+25%
<b>Donald Trump</b>	+56%	+44%	+11%	+6%

### 2016 NH Republican Primary

Donald Trump continues to top the field in New Hampshire with 34% of likely Republican primary voters supporting him. Trump is followed by Cruz (14%), Rubio (10%), Bush (10%), Paul (6%), Christie (6%), Kasich (6%), Fiorina (4%), Carson (3%), and Huckabee (1%). All other potential candidates receive less than 1% support, and 6% say they are undecided.

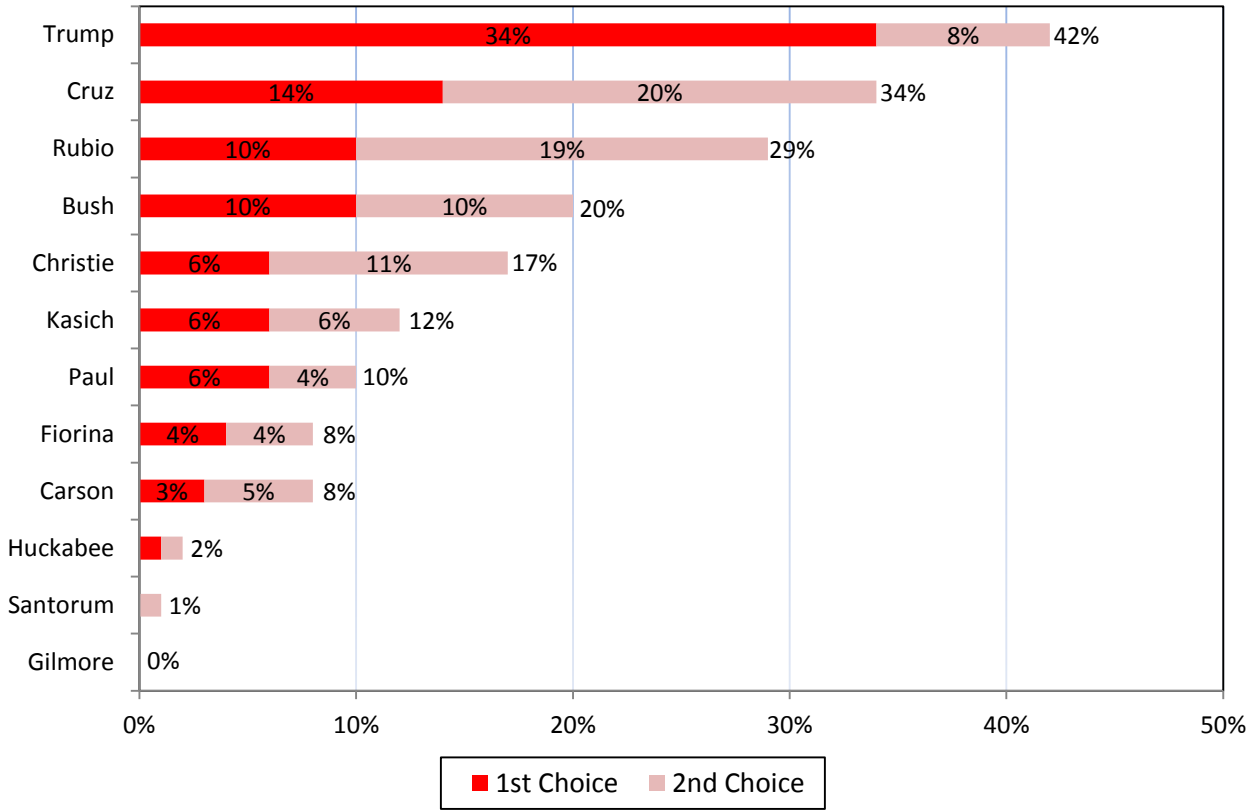
Trump (41%) and Cruz (34%) are the leading candidates among primary voters who regularly listen to conservative talk radio. Trump (24%), Rubio (19%) and Bush (17%) are the top choices among primary voters who regularly read the Union Leader.

NH 2016 GOP Presidential Primary -- Who Support If Vote Held Today?

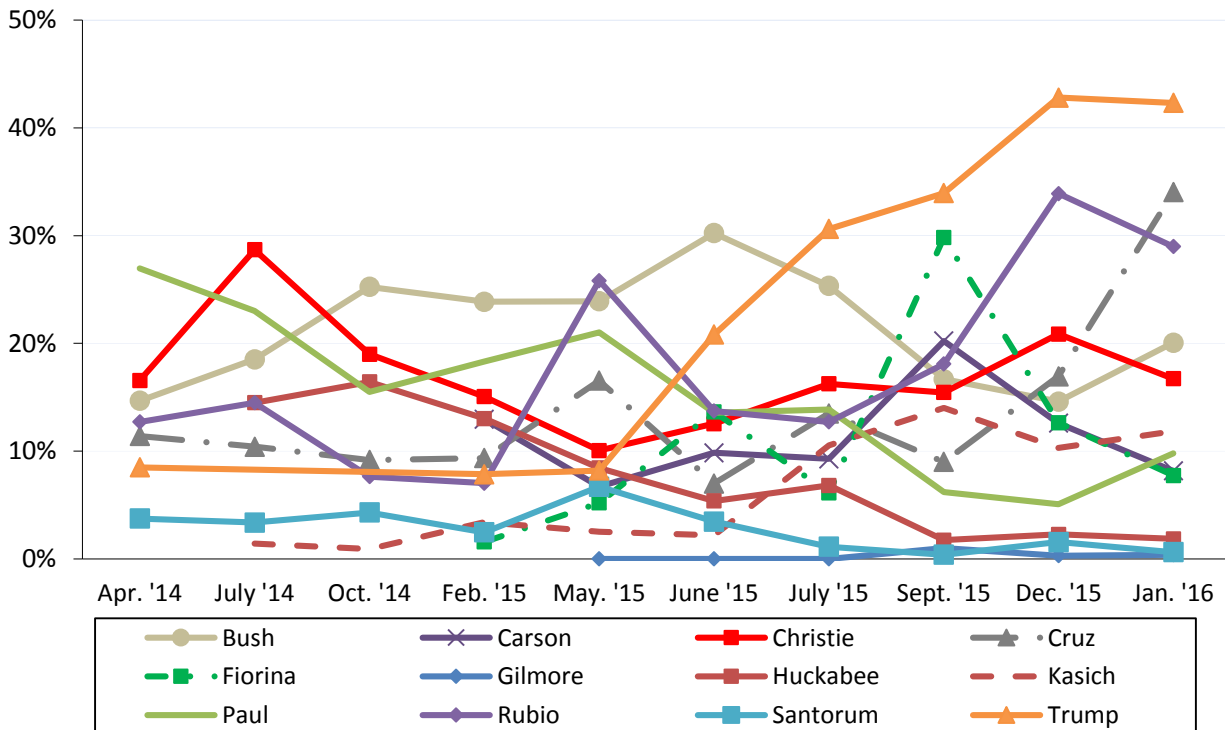


### 2016 NH Republican Primary with Second Choice

When asked their second choice, the Republican field becomes more clearly defined with Trump, Cruz and Rubio leading their rivals. When the top two choices are combined, 42% of likely primary voters favor Trump, 34% favor Cruz, 29% favor Rubio, 20% favor Bush, 17% favor Christie, 12% favor Kasich, and 10% favor Paul.



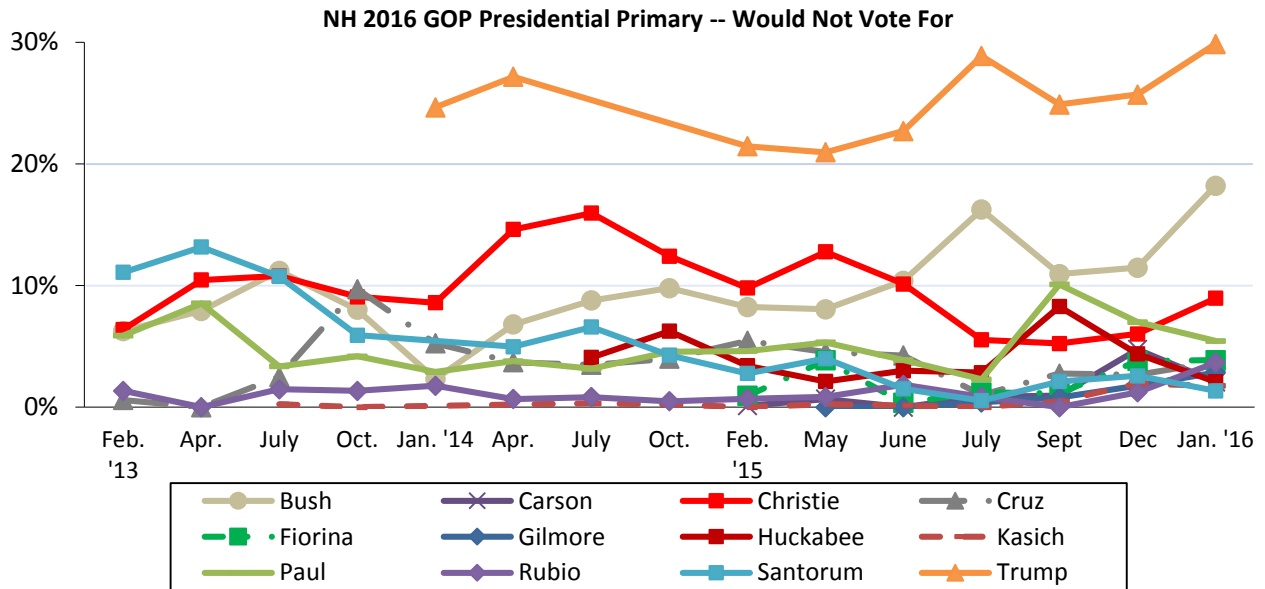
### NH 2016 GOP Presidential Primary -- First and Second Choice Combined



### Most Unpopular Republican Candidate

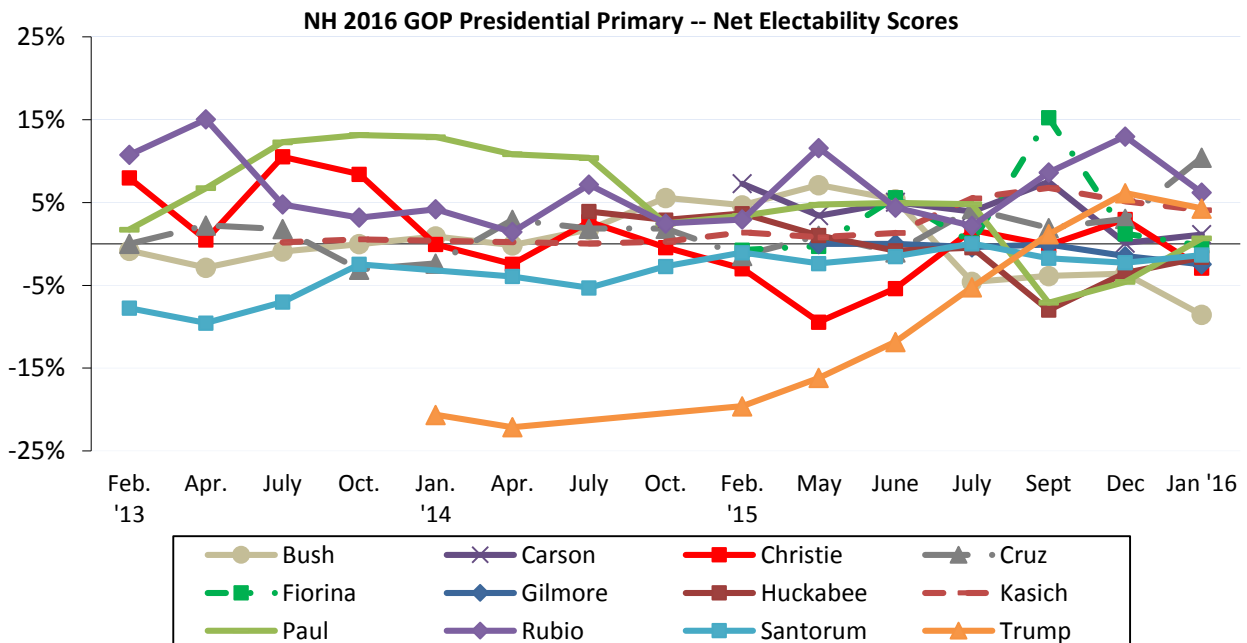
Despite leading in polls, Trump remains the candidate New Hampshire Republicans are least likely to vote for. When asked which candidate they would NOT vote for under any circumstance, 30% of likely Republican Primary voters say they would not vote for Trump, 18% would not vote for Bush, 9% would not vote for Christie, 5% would not vote for Paul, 4% would not vote for Fiorina, 4% would not vote for Cruz, 4% would not vote for Rubio, 3% would not vote for Gilmore, 2% would not vote for Huckabee, 2% would not vote for Carson, 2% would not vote for Kasich, 1% would not vote for Santorum, 10% think all the prospective candidates are acceptable, and 6% are unsure.

NHPR listeners (42%) are more likely to say they wouldn't vote for Trump under any circumstances and conservative talk radio listeners (37%) are more likely to say they wouldn't vote for Bush under any circumstances.



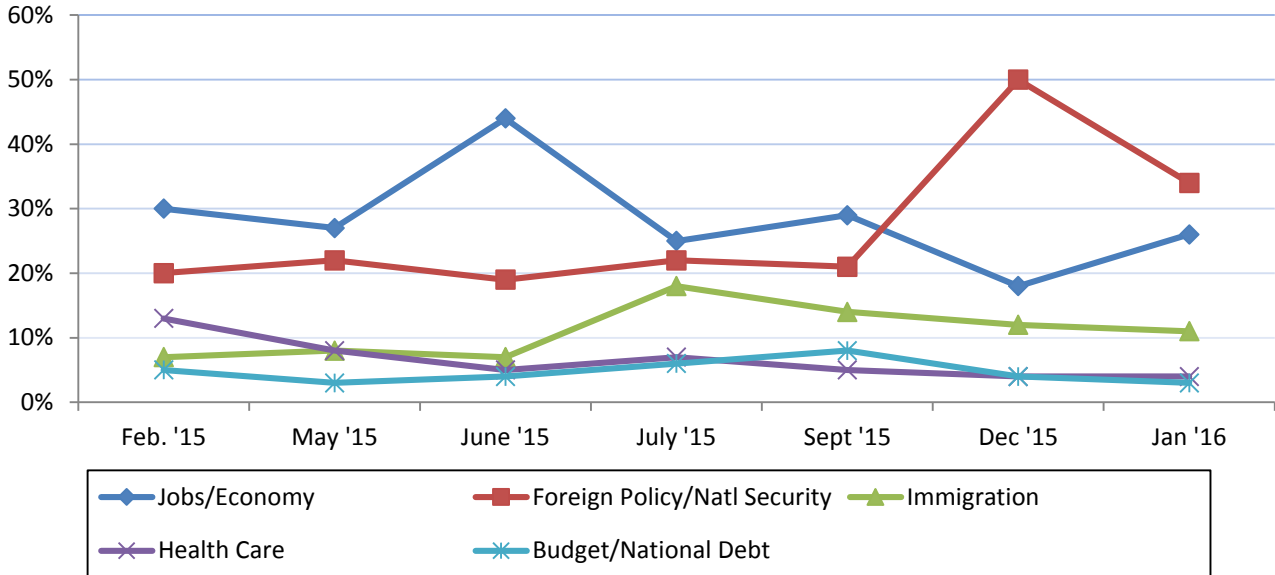
### Republican Net Electability

Cruz tops the field in net electability (the percentage who support a candidate minus the percent who would not vote for that candidate), with +10%. Rubio (+6%), Trump (+4%), Kasich (+4%), Carson (+1%) and Paul (+1%) all have positive net electability scores. Fiorina (+0%), Santorum (-1%), Huckabee (-2%), Gilmore (-3%), Christie (-3%) and Bush (-9%) have neutral or negative net electability scores.



### Most Important Issue To Primary Vote

Currently, foreign policy or national security, including terrorism, remains the most important issue in deciding a vote in the presidential primary, cited by one-third (34%) of likely Republican primary voters. Twenty-six percent (26%) cite jobs or the economy, 11% cite immigration, 4% cite health care, 3% cite the budget or national debt, 2% cite gun rights, 1% cite social issues, 1% cite taxes and 1% cite education.

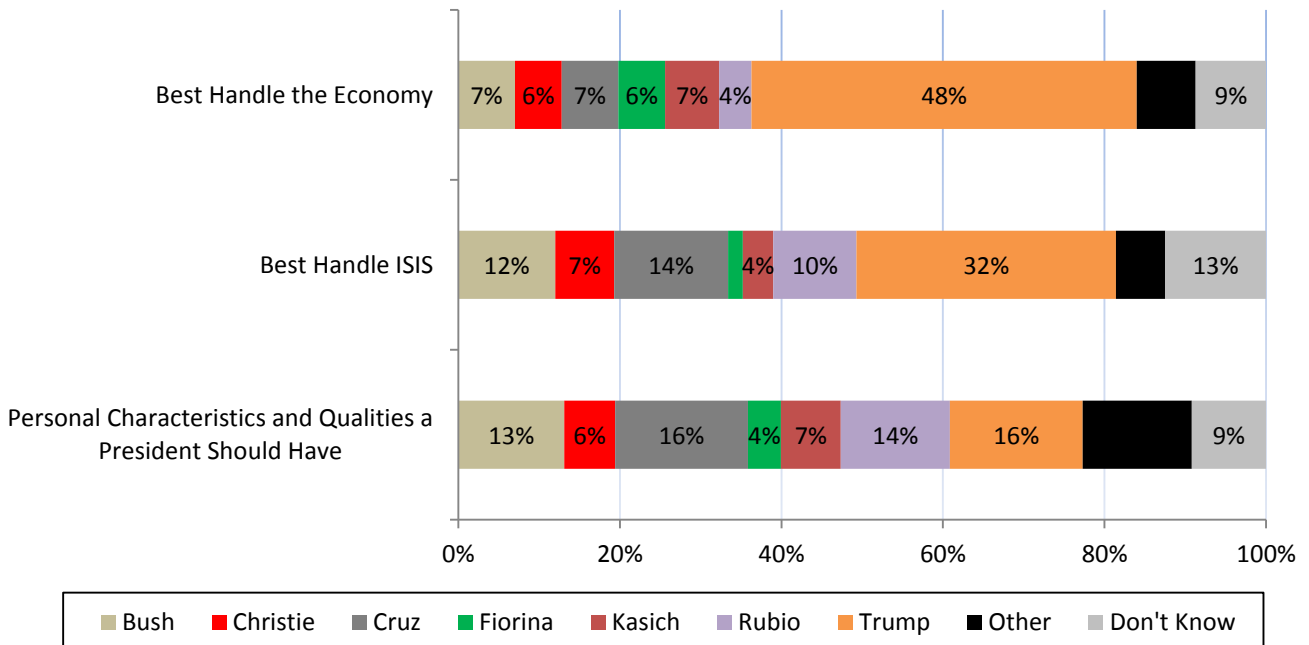


### Candidate Qualities

Nearly half of Republican Primary voters (48%) say that Donald Trump is the best to handle the economy, 7% chose Bush, 7% chose Cruz, 7% chose Kasich and 9% were unsure.

A third of likely voters (32%) chose Trump as the best to handle ISIS, 14% chose Cruz, 12% chose Bush and 13% were unsure.

Primary voters were divided on which candidate has the personal characteristics and qualities a President should have – 16% chose Trump, 16% chose Cruz, 14% chose Rubio, 13% chose Bush and 9% were unsure.





### CNN/WMUR New Hampshire Primary Poll Methodology

These findings are based on the latest CNN/WMUR New Hampshire Primary Poll, conducted by the University of New Hampshire Survey Center and funded by CNN and WMUR-TV, Manchester, NH. Interviews were conducted by the UNH Survey Center with assistance from the Center for Public Interest Polling in Eagleton Institute at Rutgers University and the Castleton College Polling Institute. Nine hundred seventy-two (972) randomly selected New Hampshire adults were interviewed by landline and cellular telephone between January 13 and January 18, 2016. If a household included more than one adult, the adult who had the most recent birthday was selected to be interviewed.

The margin of sampling error is +/- 3.1 percent for the entire sample. Included were four hundred thirteen (413) likely 2016 Republican Primary voters (MSE = +/-4.8 percentage points), and four hundred twenty (420) likely 2016 Democratic Primary voters (MSE = +/-4.8 percentage points). These MSE's have not been adjusted for design effect. The design effect for the survey is 1.1%.

The random sample used in the CNN/WMUR New Hampshire Primary Poll was purchased from Marketing Systems Group (MSG), Horsham, PA. MSG screens each selected telephone number to eliminate non-working numbers, disconnected numbers, and business numbers to improve the efficiency of the sample, reducing the amount of time interviewers spend calling non-usable numbers.

The data have been weighted to adjust for numbers of adults and telephone lines within households. Additionally, data were weighted by respondent sex, age, and region of the state to targets from the most recent American Community Survey (ACS) conducted by the U.S. Census Bureau. In addition to potential sampling error, all surveys have other potential sources of non-sampling error including question order effects, question wording effects, and non-response. Due to rounding, percentages may not sum to 100%. The number of respondents in each demographic below may not equal the number reported in cross-tabulation tables as some respondents choose not to answer some questions.

For more information about the methodology used in the CNN/WMUR New Hampshire Primary Poll, contact Dr. Andrew Smith at (603) 862-2226 or by email at [andrew.smith@unh.edu](mailto:andrew.smith@unh.edu).

### New Hampshire Primary Poll, January 2016 Demographics

Sex	N	%	Region	N	%
Male	475	49%	North Country	96	10%
Female	497	51%	Central/Lakes	171	18%
			Connecticut Valley	128	13%
			Mass Border	245	25%
<b>Age</b>	<b>N</b>	<b>%</b>	Seacoast	177	18%
18 to 34	248	26%	Manchester Area	155	16%
35 to 49	232	25%			
50 to 64	289	31%	<b>Party Registration</b>	<b>N</b>	<b>%</b>
65 and Over	168	18%	Democrat	227	23%
			Undeclared & Not Reg.	509	52%
<b>Highest Level of Education</b>	<b>N</b>	<b>%</b>	Republican	228	24%
High School or Less	190	20%			
Some College	225	23%	<b>Party Identification</b>	<b>N</b>	<b>%</b>
College Graduate	347	36%	Democrat	422	45%
Post-Graduate	208	21%	Independent	134	14%
			Republican	384	41%

## New Hampshire Primary Poll, January 2016 Likely Republican Primary Voter Demographics

<b>Sex</b>	<b>N</b>	<b>%</b>	<b>Region</b>	<b>N</b>	<b>%</b>
Male	<b>219</b>	<b>53%</b>	North Country	<b>31</b>	<b>8%</b>
Female	<b>194</b>	<b>47%</b>	Central/Lakes	<b>75</b>	<b>18%</b>
			Connecticut Valley	<b>51</b>	<b>12%</b>
<b>Age</b>	<b>N</b>	<b>%</b>	Mass Border	<b>119</b>	<b>29%</b>
18 to 34	<b>85</b>	<b>21%</b>	Seacoast	<b>66</b>	<b>16%</b>
35 to 49	<b>106</b>	<b>26%</b>	Manchester Area	<b>71</b>	<b>17%</b>
50 to 64	<b>141</b>	<b>35%</b>			
65 and Over	<b>69</b>	<b>17%</b>	<b>Party Registration</b>	<b>N</b>	<b>%</b>
			Democrat	<b>0</b>	<b>0%</b>
<b>Highest Level of Education</b>	<b>N</b>	<b>%</b>	Undeclared & Not Reg.	<b>183</b>	<b>45%</b>
High School or Less	<b>77</b>	<b>19%</b>	Republican	<b>226</b>	<b>55%</b>
Some College	<b>113</b>	<b>28%</b>			
College Graduate	<b>144</b>	<b>35%</b>	<b>Party Identification</b>	<b>N</b>	<b>%</b>
Post-Graduate	<b>77</b>	<b>19%</b>	Democrat	<b>20</b>	<b>5%</b>
			Independent	<b>54</b>	<b>13%</b>
			Republican	<b>331</b>	<b>82%</b>

### Decided Who to Vote for in 2016 GOP Primary?

(Likely NH GOP Primary Voters)

“Have you definitely decided who you will vote for in the New Hampshire primary ... are you leaning toward someone ... or have you considered some candidates but are still trying to decide?”

	<u>Definitely Decided</u>	<u>Leaning Toward Someone</u>	<u>Still Trying to Decide</u>	<u>(N)</u>
Jan '16	31%	26%	43%	(412)
Dec '15	18%	26%	56%	(403)
Sept '15	13%	28%	59%	(343)
July '15	11%	22%	66%	(309)
June '15	8%	17%	75%	(401)
May '15	5%	17%	78%	(291)
Feb. '15	6%	9%	85%	(346)
Oct. '14	11%	5%	83%	(271)
July '14	4%	9%	87%	(247)
Apr. '14	1%	7%	83%	(182)
Jan. '14	6%	6%	88%	(245)
Oct. '13	2%	6%	92%	(220)
July '13	2%	5%	93%	(197)
Apr. '13	3%	5%	91%	(164)
Feb. '13	6%	6%	88%	(205)

## Republican Nomination in 2016 NH Primary

(Likely NH GOP Primary Voters)

"I'm going to read you the names of the candidates who are either running or considering running for the Republican nomination. If the Republican primary for president were held today, which of the following would you support for the Republican nomination Jeb Bush ... Ben Carson ... Chris Christie ... Ted Cruz ... Carly Fiorina ... Jim Gilmore ... Mike Huckabee ... John Kasich ... Rand Paul ... Marco Rubio ... Rick Santorum ... Donald Trump ... or someone else?" ROTATE CANDIDATES

	<u>2014</u>				<u>2015</u>						<u>2016</u>
	<u>Jan</u>	<u>Apr</u>	<u>July</u>	<u>Oct</u>	<u>Feb</u>	<u>May</u>	<u>June</u>	<u>July</u>	<u>Sept</u>	<u>Dec</u>	<u>Jan</u>
Donald Trump	4%	5%	---	---	2%	5%	11%	24%	26%	32%	<b>34%</b>
Ted Cruz	3%	7%	5%	6%	4%	6%	3%	5%	5%	6%	<b>14%</b>
Marco Rubio	6%	2%	8%	3%	5%	12%	6%	3%	9%	14%	<b>10%</b>
Jeb Bush	3%	7%	11%	15%	17%	15%	16%	12%	7%	8%	<b>10%</b>
Rand Paul	16%	15%	14%	7%	9%	10%	9%	7%	3%	2%	<b>6%</b>
Chris Christie	9%	12%	19%	12%	9%	3%	5%	7%	5%	9%	<b>6%</b>
John Kasich	---	---	*	*	1%	1%	1%	6%	7%	7%	<b>6%</b>
Carly Fiorina	---	---	---	---	*	4%	6%	1%	16%	5%	<b>4%</b>
Ben Carson	---	---	---	---	8%	4%	5%	5%	8%	5%	<b>3%</b>
Mike Huckabee	---	---	8%	9%	9%	3%	2%	2%	*	1%	<b>1%</b>
Jim Gilmore	---	---	---	---	---	0%	0%	0%	1%	*	<b>*</b>
Rick Santorum	---	1%	1%	2%	2%	2%	0%	1%	*	*	<b>0%</b>
Lindsey Graham	---	---	---	---	---	1%	1%	1%	1%	1%	---
George Pataki	---	---	---	---	1%	2%	1%	*	*	0%	---
Scott Walker	2%	3%	3%	3%	12%	11%	8%	11%	*	---	---
Mark Everson	---	---	---	---	---	---	---	---	0%	---	---
Bobby Jindal	---	3%	5%	3%	1%	2%	*	2%	0%	---	---
Rick Perry	2%	1%	2%	2%	2%	4%	4%	2%	---	---	---
Bob Ehrlich	---	---	---	---	---	*	*	0%	---	---	---
Peter King	*	---	---	---	*	*	0%	---	---	---	---
John Bolton	---	---	---	---	1%	0%	---	---	---	---	---
Paul Ryan	6%	13%	5%	6%	---	---	---	---	---	---	---
Kelly Ayotte	13%	13%	---	---	---	---	---	---	---	---	---
Scott Brown	11%	---	---	---	---	---	---	---	---	---	---
Rob Portman	*	*	1%	*	---	---	---	---	---	---	---
John Huntsman	---	---	---	---	---	---	---	---	---	---	---
John Thune	---	---	---	---	---	---	---	---	---	---	---
Someone Else	6%	3%	3%	3%	1%	1%	1%	0%	*	0%	<b>*</b>
Don't Know Yet (N)	18% (244)	15% (186)	15% (245)	28% (274)	15% (348)	14% (293)	21% (400)	12% (305)	11% (344)	9% (399)	<b>6% (408)</b>

\* = Less than 1% --- = Not Included

**2013**

	<u>Feb</u>	<u>Apr</u>	<u>July</u>	<u>Oct</u>
<b>Donald Trump</b>	---	---	---	---
<b>Marco Rubio</b>	12%	15%	6%	4%
<b>Chris Christie</b>	14%	11%	21%	16%
<b>Jeb Bush</b>	5%	5%	10%	8%
<b>John Kasich</b>	---	---	*	*
<b>Ted Cruz</b>	1%	2%	4%	6%
<b>Carly Fiorina</b>	---	---	---	---
<b>Ben Carson</b>	---	---	---	---
<b>Rand Paul</b>	8%	15%	16%	17%
<b>Lindsey Graham</b>	---	---	---	---
<b>Mike Huckabee</b>	---	---	---	---
<b>Jim Gilmore</b>	---	---	---	---
<b>Rick Santorum</b>	3%	4%	4%	4%
<b>George Pataki</b>	---	---	---	---
<b>Scott Walker</b>	3%	1%	2%	2%
<b>Mark Everson</b>	---	---	---	---
<b>Bobby Jindal</b>	2%	2%	*	---
<b>Rick Perry</b>	---	---	4%	1%
<b>Bob Ehrlich</b>	---	---	---	---
<b>Peter King</b>	---	---	---	*
<b>John Bolton</b>	---	---	---	---
<b>Paul Ryan</b>	11%	11%	8%	9%
<b>Kelly Ayotte</b>	10%	5%	---	---
<b>Scott Brown</b>	---	---	---	7%
<b>Rob Portman</b>	0%	1%	*	*
<b>John Huntsman</b>	8%	5%	---	---
<b>John Thune</b>	1%	*	---	---
<b>Someone Else</b>	2%	0%	3%	3%
<b>Don't Know Yet</b>	20%	23%	20%	21%
<b>(N)</b>	(209)	(167)	(199)	(233)

**Second Choice in 2016 NH Primary**  
(Likely NH GOP Primary Voters)

“If \_\_\_\_\_ was not running, who would be your second choice?”

	<u>Apr. '14</u>	<u>July '14</u>	<u>Oct. '14</u>	<u>Feb. '15</u>	<u>May '15</u>	<u>June '15</u>	<u>July '15</u>	<u>Sept '15</u>	<u>Dec '15</u>	<u>Jan '16</u>
<b>Ted Cruz</b>	5%	5%	3%	5%	11%	4%	8%	4%	11%	<b>20%</b>
<b>Marco Rubio</b>	11%	8%	5%	3%	13%	7%	10%	9%	20%	<b>19%</b>
<b>Chris Christie</b>	4%	10%	7%	8%	7%	8%	9%	10%	12%	<b>11%</b>
<b>Jeb Bush</b>	8%	8%	10%	11%	9%	14%	14%	10%	7%	<b>10%</b>
<b>Donald Trump</b>	4%	---	---	6%	3%	10%	7%	8%	11%	<b>8%</b>
<b>John Kasich</b>	---	1%	*	2%	2%	1%	5%	7%	3%	<b>6%</b>
<b>Ben Carson</b>	---	---	---	6%	3%	5%	5%	12%	8%	<b>5%</b>
<b>Carly Fiorina</b>	---	---	---	1%	2%	8%	5%	13%	8%	<b>4%</b>
<b>Rand Paul</b>	12%	9%	8%	10%	11%	5%	7%	3%	3%	<b>4%</b>
<b>Mike Huckabee</b>	---	7%	7%	6%	5%	3%	4%	1%	1%	<b>1%</b>
<b>Rick Santorum</b>	3%	2%	3%	1%	5%	3%	1%	0%	1%	<b>1%</b>
<b>Jim Gilmore</b>	---	---	---	---	0%	0%	0%	*	0%	<b>0%</b>
<b>George Pataki</b>	---	---	---	2%	1%	4%	1%	1%	1%	---
<b>Lindsey Graham</b>	---	---	---	---	*	*	*	*	2%	---
<b>Scott Walker</b>	4%	4%	5%	5%	9%	7%	6%	2%	---	---
<b>Bobby Jindal</b>	3%	4%	2%	2%	1%	3%	1%	*	---	---
<b>Mark Everson</b>	---	---	---	---	---	---	---	0%	---	---
<b>Rick Perry</b>	1%	3%	5%	3%	3%	5%	2%	---	---	---
<b>Bob Ehrlich</b>	---	---	---	---	*	0%	0%	---	---	---
<b>Peter King</b>	---	---	---	1%	0%	0%	---	---	---	---
<b>John Bolton</b>	---	---	---	1%	1%	---	---	---	---	---
<b>Mitt Romney</b>	---	---	---	12%	---	---	---	---	---	---
<b>Paul Ryan</b>	8%	7%	5%	---	---	---	---	---	---	---
<b>Kelly Ayotte</b>	11%	---	---	---	---	---	---	---	---	---
<b>Rob Portman</b>	1%	1%	*	---	---	---	---	---	---	---
<b>Someone Else</b>	*	1%	*	1%	2%	1%	0%	1%	*	<b>2%</b>
<b>No Second Choice</b>	9%	14%	34%	6%	5%	3%	5%	8%	5%	<b>4%</b>
<b>Don't Know</b>	17%	16%	5%	8%	7%	8%	11%	9%	8%	<b>5%</b>
<b>(N)</b>	<b>(187)</b>	<b>(246)</b>	<b>(274)</b>	<b>(301)</b>	<b>(250)</b>	<b>(317)</b>	<b>(269)</b>	<b>(307)</b>	<b>(360)</b>	<b>(382)</b>

**Candidate You Wouldn't Vote For In 2016 NH Republican Primary**  
(Likely NH GOP Primary Voters)

“Which of the candidates who are either running or considering running for the Republican nomination would you NOT vote for under any circumstance?”

	<u>2014</u>				<u>2015</u>						<u>2016</u>
	<u>Jan</u>	<u>Apr</u>	<u>July</u>	<u>Oct</u>	<u>Feb</u>	<u>May</u>	<u>June</u>	<u>July</u>	<u>Sept</u>	<u>Dec</u>	<u>Jan</u>
Donald Trump	25%	27%	---	---	21%	21%	23%	29%	25%	26%	<b>30%</b>
Jeb Bush	2%	7%	9%	10%	8%	8%	10%	16%	11%	11%	<b>18%</b>
Chris Christie	9%	15%	16%	12%	10%	13%	10%	6%	5%	6%	<b>9%</b>
Rand Paul	3%	4%	3%	5%	5%	5%	4%	2%	10%	7%	<b>5%</b>
Carly Fiorina	---	---	---	---	1%	4%	*	1%	1%	4%	<b>4%</b>
Ted Cruz	5%	4%	3%	4%	5%	5%	4%	1%	3%	3%	<b>4%</b>
Marco Rubio	2%	1%	1%	*	1%	1%	2%	1%	0%	1%	<b>4%</b>
Jim Gilmore	---	---	---	---	---	0%	0%	*	1%	2%	<b>3%</b>
Mike Huckabee	---	---	4%	6%	3%	2%	3%	3%	8%	4%	<b>2%</b>
Ben Carson	---	---	---	---	*	1%	0%	1%	1%	5%	<b>2%</b>
John Kasich	---	---	*	*	0%	*	*	0%	*	2%	<b>2%</b>
Rick Santorum	---	5%	7%	4%	3%	4%	2%	1%	2%	3%	<b>1%</b>
Lindsey Graham	---	---	---	---	---	2%	1%	4%	4%	3%	---
George Pataki	---	---	---	---	*	4%	2%	2%	2%	2%	---
Mark Everson	---	---	---	---	---	---	---	---	1%	---	---
Bobby Jindal	---	*	1%	1%	1%	1%	2%	*	1%	---	---
Scott Walker	*	0%	3%	*	*	1%	2%	*	*	---	---
Rick Perry	2%	3%	7%	4%	2%	1%	1%	2%	---	---	---
Bob Ehrlich	---	---	---	---	---	0%	*	0%	---	---	---
Peter King	1%	---	---	---	1%	0%	1%	---	---	---	---
John Bolton	---	---	---	---	0%	1%	---	---	---	---	---
Mitt Romney	---	---	---	---	5%	---	---	---	---	---	---
Paul Ryan	*	0%	1%	0%	---	---	---	---	---	---	---
Rob Portman	*	0%	*	1%	---	---	---	---	---	---	---
Kelly Ayotte	5%	4%	---	---	---	---	---	---	---	---	---
Scott Brown	5%	---	---	---	---	---	---	---	---	---	---
John Huntsman	---	---	---	---	---	---	---	---	---	---	---
John Thune	---	---	---	---	---	---	---	---	---	---	---
Someone Else	*	2%	*	*	1%	*	1%	1%	0%	1%	<b>*</b>
All OK	21%	16%	23%	17%	11%	10%	13%	12%	10%	12%	<b>10%</b>
Don't Know	19%	14%	21%	34%	22%	18%	19%	17%	15%	9%	<b>6%</b>
(N)	(243)	(185)	(243)	(271)	(347)	(285)	(397)	(307)	(343)	(399)	<b>(406)</b>

	<u>2013</u>			
	<u>Feb</u>	<u>Apr</u>	<u>July</u>	<u>Oct</u>
Donald Trump	---	---	---	---
Jeb Bush	6%	8%	11%	8%
Rand Paul	6%	9%	3%	5%
Chris Christie	6%	11%	11%	7%
Ben Carson	---	---	---	---
Mike Huckabee	---	---	---	---
Carly Fiorina	---	---	---	---
Lindsey Graham	---	---	---	---
Ted Cruz	1%	*	3%	8%
Rick Santorum	11%	13%	11%	6%
George Pataki	---	---	---	---
John Kasich	---	---	*	0%
Jim Gilmore	---	---	---	---
Marco Rubio	1%	*	2%	2%
Mark Everson	---	---	---	---
Bobby Jindal	2%	*	1%	---
Scott Walker	2%	*	0%	*
Rick Perry	---	---	5%	6%
Bob Ehrlich	---	---	---	---
Peter King	---	---	---	5%
John Bolton	---	---	---	---
Mitt Romney	---	---	---	---
Paul Ryan	2%	*	*	1%
Rob Portman	3%	1%	1%	*
Kelly Ayotte	6%	6%	---	---
Scott Brown	---	---	---	2%
John Huntsman	4%	6%	---	---
John Thune	1%	*	---	---
Someone Else	2%	*	*	1%
All OK	15%	24%	25%	20%
Don't Know	32%	21%	25%	28%
(N)	(208)	(168)	(197)	(232)

**Most Important Issue To Primary Vote**  
(Likely NH GOP Primary Voters)

“There are many issues facing the candidates in the election for president. In your opinion, which one issue is MOST IMPORTANT to YOUR VOTE in the presidential primary?”

	<u>Feb. '15</u>	<u>May '15</u>	<u>June '15</u>	<u>July '15</u>	<u>Sept '15</u>	<u>Dec '15</u>	<u>Jan. '16</u>
Foreign Policy/National Security	20%	22%	19%	22%	21%	50%	<b>34%</b>
Jobs/Economy	29%	27%	44%	25%	29%	18%	<b>26%</b>
Immigration	7%	8%	7%	18%	14%	12%	<b>11%</b>
Health Care	13%	8%	5%	7%	5%	4%	<b>4%</b>
Budget/National Debt	5%	3%	4%	6%	8%	4%	<b>3%</b>
Gun Rights	*	*	%	%	%	%	<b>2%</b>
Social Issues	2%	2%	2%	4%	3%	1%	<b>1%</b>
Taxes	3%	5%	1%	0%	2%	1%	<b>1%</b>
Education	0%	1%	2%	1%	1%	1%	<b>1%</b>
Other/Don't Know	21%	24%	17%	18%	16%	10%	<b>16%</b>
(N)	(285)	(283)	(390)	(288)	(333)	(394)	<b>(405)</b>



**Candidate Characteristics**  
(Likely NH GOP Primary Voters)

“Which Republican candidate do you think can best handle ISIS?”

	<u>Dec '15</u>	<u>Jan '16</u>
Donald Trump	33%	<b>32%</b>
Ted Cruz	7%	<b>14%</b>
Jeb Bush	11%	<b>12%</b>
Marco Rubio	7%	<b>10%</b>
Chris Christie	9%	<b>7%</b>
John Kasich	4%	<b>4%</b>
Rand Paul	2%	<b>4%</b>
Ben Carson	2%	<b>2%</b>
Carly Fiorina	2%	<b>2%</b>
Mike Huckabee	1%	<b>0%</b>
Rick Santorum	0%	<b>0%</b>
Jim Gilmore	0%	<b>0%</b>
Lindsey Graham	7%	---
George Pataki	0%	---
Someone Else	1%	<b>1%</b>
Don't Know	15%	<b>13%</b>
(N)	(398)	<b>(409)</b>

“Which Republican candidate do you think can best handle the economy?”

	<u>June '15</u>	<u>July '15</u>	<u>Jan. '16</u>
Donald Trump	29%	43%	<b>48%</b>
Ted Cruz	2%	1%	<b>7%</b>
Jeb Bush	13%	8%	<b>7%</b>
John Kasich	1%	6%	<b>7%</b>
Carly Fiorina	7%	3%	<b>6%</b>
Chris Christie	4%	5%	<b>6%</b>
Rand Paul	7%	5%	<b>6%</b>
Marco Rubio	1%	1%	<b>4%</b>
Ben Carson	2%	1%	<b>1%</b>
Mike Huckabee	1%	*	*
Rick Santorum	*	1%	<b>0%</b>
Jim Gilmore	0%	0%	<b>0%</b>
Rick Perry	5%	1%	---
George Pataki	2%	1%	---
Scott Walker	6%	9%	---
Peter King	*	---	---
Bobby Jindal	*	2%	---
Lindsey Graham	*	*	---
Bob Ehrlich	0%	0%	---
Someone Else	1%	*	*
Don't Know	17%	13%	<b>9%</b>
(N)	(401)	(308)	<b>(412)</b>

Which Republican candidate do you think has the personal characteristics and qualities that you think a President should have?"

	<u>June '15</u>	<u>Jan. '16</u>
Donald Trump	8%	<b>16%</b>
Ted Cruz	3%	<b>16%</b>
Marco Rubio	6%	<b>14%</b>
Jeb Bush	19%	<b>13%</b>
John Kasich	1%	<b>7%</b>
Ben Carson	6%	<b>6%</b>
Chris Christie	3%	<b>6%</b>
Rand Paul	8%	<b>5%</b>
Carly Fiorina	4%	<b>4%</b>
Mike Huckabee	3%	<b>2%</b>
Rick Santorum	*	*
Jim Gilmore	0%	<b>0%</b>
George Pataki	2%	---
Scott Walker	7%	---
Lindsey Graham	1%	---
Rick Perry	4%	---
Bobby Jindal	0%	---
Bob Ehrlich	0%	---
Peter King	0%	---
Someone Else	2%	*
Don't Know	22%	<b>9%</b>
(N)	(398)	<b>(409)</b>

\* = Less than 1% --- = Not Included

**GOP Favorability Ratings**  
(Likely GOP Primary Voters)

"Next, I'd like to get your overall opinion of some REPUBLICANS who are running or may run for President in 2016. As I read each name, please say if you have a favorable or unfavorable opinion of this person - or if you have never heard of him or her."

"Former Florida Governor Jeb Bush?"

	<u>Favorable</u>	<u>Neutral</u>	<u>Unfavorable</u>	<u>Don't Know</u>	<u>Net</u>	<u>(N)</u>
Jan '16	<b>40%</b>	<b>7%</b>	<b>51%</b>	<b>2%</b>	<b>-11%</b>	<b>(413)</b>
Dec '15	42%	12%	45%	2%	-3%	(402)
Sept '15	47%	14%	36%	3%	+11%	(343)
July '15	46%	12%	38%	4%	+8%	(308)
June '15	50%	12%	33%	5%	+17%	(400)
May '15	45%	17%	34%	4%	+11%	(293)
Feb. '15	47%	9%	33%	11%	+14%	(349)
Oct. '14	49%	3%	28%	20%	+21%	(274)
July '14	45%	7%	31%	18%	+14%	(251)
Apr. '14	45%	9%	35%	11%	+10%	(187)
Jan. '14	46%	8%	25%	21%	+21%	(246)
Oct. '13	47%	8%	27%	18%	+20%	(236)
July '13	53%	5%	27%	15%	+26%	(200)
Apr. '13	48%	10%	34%	8%	+14%	(171)
Feb. '13	53%	5%	31%	11%	+22%	(212)

"Neurosurgeon Ben Carson?"

	<u>Favorable</u>	<u>Neutral</u>	<u>Unfavorable</u>	<u>Don't Know</u>	<u>Net</u>	<u>(N)</u>
Jan '16	<b>46%</b>	<b>11%</b>	<b>36%</b>	<b>7%</b>	<b>+10%</b>	<b>(413)</b>
Dec '15	47%	13%	35%	5%	+12%	(402)
Sept '15	60%	10%	18%	13%	+42%	(344)
July '15	40%	5%	14%	41%	+26%	(309)
June '15	40%	7%	13%	40%	+27%	(400)
May '15	34%	15%	12%	40%	+22%	(292)
Feb. '15	30%	8%	9%	54%	+21%	(348)

"New Jersey Governor Chris Christie?"

	<u>Favorable</u>	<u>Neutral</u>	<u>Unfavorable</u>	<u>Don't Know</u>	<u>Net</u>	<u>(N)</u>
Jan '16	<b>41%</b>	<b>9%</b>	<b>47%</b>	<b>3%</b>	<b>-6%</b>	<b>(413)</b>
Dec '15	53%	9%	34%	3%	+19%	(401)
Sept '15	50%	8%	37%	5%	+13%	(342)
July '15	41%	10%	41%	7%	0%	(309)
June '15	31%	14%	44%	12%	-13%	(400)
May '15	39%	15%	40%	6%	-1%	(292)
Feb. '15	41%	10%	36%	13%	+5%	(349)
Oct. '14	44%	4%	35%	17%	+9%	(274)
July '14	46%	6%	36%	13%	+10%	(251)
Apr. '14	43%	10%	42%	5%	+1%	(187)
Jan. '14	43%	9%	33%	15%	+10%	(246)
Oct. '13	49%	6%	23%	23%	+26%	(236)
July '13	59%	5%	24%	12%	+25%	(200)
Apr. '13	56%	8%	26%	9%	+30%	(171)
Feb. '13	60%	7%	21%	12%	+39%	(212)

"Texas Senator Ted Cruz?"

	<u>Favorable</u>	<u>Neutral</u>	<u>Unfavorable</u>	<u>Don't Know</u>	<u>Net</u>	<u>(N)</u>
<b>Jan '16</b>	<b>55%</b>	<b>8%</b>	<b>30%</b>	<b>7%</b>	<b>+25%</b>	<b>(413)</b>
Dec '15	46%	10%	36%	8%	+10%	(402)
Sept '15	42%	10%	35%	13%	+7%	(344)
July '15	46%	10%	22%	21%	+24%	(309)
June '15	32%	11%	31%	26%	+1%	(400)
May '15	44%	14%	29%	13%	+15%	(293)
Feb. '15	37%	8%	24%	31%	+13%	(349)
Oct. '14	33%	6%	22%	39%	+11%	(275)
July '14	39%	4%	22%	35%	+17%	(250)
Apr. '14	42%	9%	18%	31%	+24%	(187)
Jan. '14	37%	8%	18%	37%	+19%	(246)
Oct. '13	32%	5%	19%	43%	+13%	(236)
July '13	29%	6%	17%	48%	+12%	(200)
Apr. '13	21%	8%	12%	59%	+9%	(171)
Feb. '13	18%	6%	14%	62%	+4%	(212)

"Businesswoman Carly Fiorina?"

	<u>Favorable</u>	<u>Neutral</u>	<u>Unfavorable</u>	<u>Don't Know</u>	<u>Net</u>	<u>(N)</u>
<b>Jan '16</b>	<b>49%</b>	<b>10%</b>	<b>30%</b>	<b>11%</b>	<b>+19%</b>	<b>(413)</b>
Dec '15	49%	12%	29%	10%	+20%	(400)
Sept '15	62%	9%	15%	14%	+47%	(344)
July '15	37%	7%	17%	39%	+20%	(309)
June '15	39%	6%	15%	41%	+24%	(401)
May '15	29%	12%	19%	39%	+10%	(292)
Feb. '15	15%	9%	13%	62%	+2%	(349)

"Former Virginia Governor Jim Gilmore?"

	<u>Favorable</u>	<u>Neutral</u>	<u>Unfavorable</u>	<u>Don't Know</u>	<u>Net</u>	<u>(N)</u>
<b>Jan '16</b>	<b>4%</b>	<b>12%</b>	<b>34%</b>	<b>51%</b>	<b>-30%</b>	<b>(412)</b>
Dec '15	3%	12%	30%	55%	-27%	(402)
Sept '15	5%	12%	30%	54%	-25%	(341)
July '15	5%	8%	18%	69%	-13%	(309)
June '15	6%	6%	15%	73%	-9%	(400)
May '15	4%	20%	12%	65%	-8%	(292)

"Former Arkansas Governor Mike Huckabee?"

	<u>Favorable</u>	<u>Neutral</u>	<u>Unfavorable</u>	<u>Don't Know</u>	<u>Net</u>	<u>(N)</u>
<b>Jan '16</b>	<b>32%</b>	<b>11%</b>	<b>49%</b>	<b>8%</b>	<b>-17%</b>	<b>(413)</b>
Dec '15	31%	13%	52%	4%	-21%	(402)
Sept '15	35%	15%	45%	5%	-10%	(344)
July '15	40%	11%	39%	10%	+1%	(309)
June '15	31%	13%	43%	13%	-12%	(400)
May '15	45%	18%	32%	5%	+13%	(292)
Feb. '15	45%	11%	31%	14%	+14%	(349)
Oct. '14	48%	6%	28%	17%	+20%	(275)
July '14	46%	7%	30%	16%	+16%	(251)

“Ohio Governor John Kasich?”

	<u>Favorable</u>	<u>Neutral</u>	<u>Unfavorable</u>	<u>Don't Know</u>	<u>Net</u>	<u>(N)</u>
Jan '16	38%	10%	37%	15%	+1%	(413)
Dec '15	36%	12%	35%	17%	+1%	(400)
Sept '15	45%	8%	24%	24%	+21%	(342)
July '15	34%	12%	17%	37%	+17%	(309)
June '15	20%	13%	13%	54%	+7%	(400)
May '15	20%	14%	17%	49%	+3%	(292)
Feb. '15	15%	12%	16%	57%	-1%	(349)
Oct. '14	17%	5%	12%	66%	+5%	(274)
July '14	22%	5%	12%	61%	+10%	(250)
Oct. '13	12%	5%	16%	74%	+3%	(236)
July '13	28%	5%	16%	52%	+12%	(200)

"Kentucky Senator Rand Paul?"

	<u>Favorable</u>	<u>Neutral</u>	<u>Unfavorable</u>	<u>Don't Know</u>	<u>Net</u>	<u>(N)</u>
Jan '16	34%	11%	49%	7%	-15%	(413)
Dec '15	34%	13%	49%	4%	-15%	(402)
Sept '15	31%	14%	48%	7%	-17%	(344)
July '15	44%	13%	32%	12%	+12%	(309)
June '15	43%	15%	32%	10%	+11%	(400)
May '15	51%	11%	31%	6%	+20%	(292)
Feb. '15	53%	8%	27%	12%	+26%	(349)
Oct. '14	50%	6%	23%	21%	+27%	(274)
July '14	53%	8%	23%	16%	+30%	(251)
Apr. '14	56%	8%	21%	15%	+35%	(187)
Jan. '14	49%	8%	14%	28%	+35%	(246)
Oct. '13	52%	4%	24%	20%	+28%	(236)
July '13	57%	3%	20%	20%	+37%	(200)
Apr. '13	54%	7%	19%	20%	+35%	(171)
Feb. '13	45%	6%	26%	23%	+19%	(212)

"Florida Senator Marco Rubio?"

	<u>Favorable</u>	<u>Neutral</u>	<u>Unfavorable</u>	<u>Don't Know</u>	<u>Net</u>	<u>(N)</u>
Jan '16	58%	7%	32%	4%	+26%	(413)
Dec '15	61%	9%	23%	7%	+38%	(402)
Sept '15	58%	6%	22%	14%	+36%	(344)
July '15	46%	11%	25%	19%	+21%	(309)
June '15	49%	10%	21%	19%	+28%	(400)
May '15	60%	11%	16%	12%	+44%	(292)
Feb. '15	41%	10%	17%	33%	+24%	(348)
Oct. '14	43%	6%	14%	37%	+29%	(274)
July '14	46%	4%	19%	31%	+27%	(250)
Apr. '14	52%	9%	12%	27%	+40%	(187)
Jan. '14	42%	7%	11%	40%	+31%	(246)
Oct. '13	41%	7%	18%	34%	+23%	(236)
July '13	47%	6%	14%	33%	+33%	(200)
Apr. '13	59%	8%	8%	25%	+51%	(171)
Feb. '13	56%	6%	6%	31%	+50%	(212)

"Former Pennsylvania Senator Rick Santorum?"

	<u>Favorable</u>	<u>Neutral</u>	<u>Unfavorable</u>	<u>Don't Know</u>	<u>Net</u>	<u>(N)</u>
Jan '16	21%	11%	50%	17%	-29%	(412)
Dec '15	20%	14%	50%	15%	-30%	(402)
Sept '15	23%	9%	52%	16%	-29%	(344)
July '15	29%	12%	39%	20%	-10%	(309)
June '15	27%	14%	38%	21%	-11%	(400)
May '15	35%	15%	37%	14%	-2%	(292)
Feb. '15	29%	14%	34%	23%	-5%	(349)
Oct. '14	31%	10%	31%	29%	0%	(274)
July '14	38%	7%	30%	25%	+8%	(250)
Apr. '14	36%	9%	31%	25%	+5%	(187)
Oct. '13	39%	9%	27%	25%	+12%	(236)
July '13	44%	6%	37%	13%	+7%	(200)
Apr. '13	39%	11%	38%	12%	+1%	(171)
Feb. '13	40%	8%	42%	10%	-2%	(212)

"Businessman Donald Trump?"

	<u>Favorable</u>	<u>Neutral</u>	<u>Unfavorable</u>	<u>Don't Know</u>	<u>Net</u>	<u>(N)</u>
Jan '16	54%	5%	40%	1%	+14%	(411)
Dec '15	57%	6%	36%	1%	+19%	(402)
Sept '15	55%	7%	38%	0%	+17%	(344)
July '15	51%	7%	40%	2%	+11%	(309)
June '15	38%	11%	48%	4%	-10%	(400)
May '15	27%	13%	56%	5%	-29%	(292)
Feb. '15	19%	9%	69%	3%	-50%	(349)
Apr. '14	23%	6%	66%	5%	-43%	(187)
Jan. '14	29%	8%	59%	5%	-30%	(246)

**Favorability Rating – Jeb Bush  
(Likely 2016 GOP Primary Voters)**

<b>LIKELY NH GOP PRIMARY VOTERS</b>	<b><u>Favorable</u></b>	<b><u>Neutral</u></b>	<b><u>Unfavorable</u></b>	<b><u>Don't Know</u></b>	<b><u>(N)</u></b>
	<b>40%</b>	<b>7%</b>	<b>51%</b>	<b>2%</b>	<b>413</b>
Registered Undeclared	37%	7%	53%	3%	183
Registered Republican	43%	8%	49%	1%	226
Democrat	51%	7%	42%	0%	20
Independent	33%	14%	53%	0%	54
Republican	41%	6%	51%	2%	331
Liberal	38%	9%	53%	0%	17
Moderate	55%	8%	34%	2%	148
Conservative	30%	7%	62%	2%	222
Voted in 2008,2012 NH Primaries	38%	6%	55%	2%	297
Voted in 2008 or 2012 NH Primary	40%	14%	43%	2%	60
Did Not Vote in Either NH Primary	52%	6%	40%	2%	56
Union household	33%	6%	60%	2%	40
Non-union	40%	7%	51%	2%	368
Read Union Leader	45%	8%	45%	1%	92
Read Boston Globe	47%	5%	43%	4%	30
Read Local Newspapers	51%	4%	43%	2%	120
Watch WMUR	44%	7%	46%	2%	248
Listen to NHPR	52%	2%	43%	3%	90
Listen to Conserv. Talk Radio	22%	7%	70%	1%	83
18 to 34	44%	8%	46%	3%	85
35 to 49	29%	7%	63%	2%	106
50 to 64	41%	5%	52%	2%	141
65 and over	52%	13%	35%	0%	69
Male	41%	6%	51%	2%	219
Female	39%	8%	51%	2%	194
High school or less	36%	4%	58%	2%	77
Some college	41%	4%	52%	3%	113
College graduate	37%	12%	49%	2%	144
Post-graduate	47%	6%	46%	0%	77
Attend services 1 or more/week	41%	5%	52%	1%	107
1-2 times a month	53%	8%	37%	2%	51
Less often	44%	5%	48%	3%	112
Never	30%	10%	59%	2%	137
North Country	36%	1%	63%	0%	31
Central / Lakes	47%	8%	42%	2%	75
Connecticut Valley	38%	3%	56%	3%	51
Mass Border	44%	6%	47%	3%	119
Seacoast	41%	14%	44%	2%	66
Manchester Area	29%	8%	63%	0%	71
First Cong. Dist	38%	9%	52%	1%	219
Second Cong. Dist	42%	5%	50%	3%	194

**Favorability Rating – Ben Carson  
(Likely 2016 GOP Primary Voters)**

<b>LIKELY NH GOP PRIMARY VOTERS</b>	<b><u>Favorable</u></b> <b>46%</b>	<b><u>Neutral</u></b> <b>11%</b>	<b><u>Unfavorable</u></b> <b>36%</b>	<b><u>Don't Know</u></b> <b>7%</b>	<b><u>(N)</u></b> <b>413</b>
Registered Undeclared	38%	12%	43%	7%	183
Registered Republican	52%	10%	31%	7%	226
Democrat	40%	10%	47%	4%	20
Independent	30%	18%	49%	3%	54
Republican	48%	10%	34%	8%	331
Liberal	31%	9%	59%	0%	17
Moderate	33%	11%	47%	9%	148
Conservative	59%	10%	26%	5%	222
Voted in 2008,2012 NH Primaries	53%	11%	32%	4%	297
Voted in 2008 or 2012 NH Primary	28%	15%	44%	12%	60
Did Not Vote in Either NH Primary	28%	7%	49%	16%	56
Union household	36%	10%	53%	2%	40
Non-union	47%	11%	34%	7%	368
Read Union Leader	51%	8%	34%	7%	92
Read Boston Globe	40%	4%	56%	0%	30
Read Local Newspapers	42%	10%	39%	9%	120
Watch WMUR	45%	12%	37%	6%	248
Listen to NHPR	48%	9%	36%	6%	90
Listen to Conserv. Talk Radio	71%	8%	19%	3%	83
18 to 34	40%	10%	38%	12%	85
35 to 49	43%	15%	31%	11%	106
50 to 64	50%	8%	40%	2%	141
65 and over	50%	10%	33%	6%	69
Male	46%	9%	38%	7%	219
Female	46%	13%	35%	7%	194
High school or less	50%	8%	36%	5%	77
Some college	52%	11%	28%	9%	113
College graduate	38%	13%	42%	7%	144
Post-graduate	47%	10%	37%	6%	77
Attend services 1 or more/week	57%	8%	23%	12%	107
1-2 times a month	49%	15%	24%	11%	51
Less often	50%	10%	39%	1%	112
Never	33%	12%	48%	7%	137
North Country	34%	7%	59%	0%	31
Central / Lakes	48%	9%	29%	14%	75
Connecticut Valley	53%	11%	31%	5%	51
Mass Border	42%	13%	40%	4%	119
Seacoast	52%	7%	36%	6%	66
Manchester Area	46%	13%	31%	10%	71
First Cong. Dist	45%	10%	36%	9%	219
Second Cong. Dist	48%	11%	36%	5%	194



**Favorability Rating – Chris Christie  
(Likely 2016 GOP Primary Voters)**

<b>LIKELY NH GOP PRIMARY VOTERS</b>	<b><u>Favorable</u></b> <b>41%</b>	<b><u>Neutral</u></b> <b>9%</b>	<b><u>Unfavorable</u></b> <b>47%</b>	<b><u>Don't Know</u></b> <b>3%</b>	<b><u>(N)</u></b> <b>413</b>
Registered Undeclared	36%	11%	50%	2%	183
Registered Republican	45%	6%	45%	4%	226
Democrat	27%	21%	52%	0%	20
Independent	36%	7%	56%	0%	54
Republican	43%	8%	45%	4%	331
Liberal	33%	13%	45%	9%	17
Moderate	49%	10%	38%	2%	148
Conservative	37%	7%	53%	3%	222
Voted in 2008,2012 NH Primaries	42%	8%	48%	2%	297
Voted in 2008 or 2012 NH Primary	38%	13%	40%	8%	60
Did Not Vote in Either NH Primary	40%	7%	49%	5%	56
Union household	32%	13%	49%	5%	40
Non-union	42%	8%	47%	3%	368
Read Union Leader	48%	11%	37%	4%	92
Read Boston Globe	54%	3%	43%	0%	30
Read Local Newspapers	40%	10%	47%	3%	120
Watch WMUR	45%	7%	46%	3%	248
Listen to NHPR	54%	2%	42%	2%	90
Listen to Conserv. Talk Radio	37%	9%	54%	0%	83
18 to 34	27%	15%	48%	10%	85
35 to 49	37%	9%	53%	2%	106
50 to 64	47%	6%	45%	1%	141
65 and over	55%	6%	37%	2%	69
Male	36%	9%	53%	2%	219
Female	47%	8%	40%	4%	194
High school or less	35%	5%	55%	4%	77
Some college	36%	7%	52%	5%	113
College graduate	47%	10%	40%	2%	144
Post-graduate	44%	11%	43%	2%	77
Attend services 1 or more/week	41%	10%	46%	4%	107
1-2 times a month	50%	10%	36%	4%	51
Less often	36%	8%	52%	4%	112
Never	41%	9%	49%	1%	137
North Country	38%	4%	58%	0%	31
Central / Lakes	44%	11%	40%	4%	75
Connecticut Valley	35%	9%	55%	2%	51
Mass Border	40%	11%	46%	3%	119
Seacoast	42%	4%	53%	0%	66
Manchester Area	46%	8%	40%	7%	71
First Cong. Dist	49%	7%	42%	2%	219
Second Cong. Dist	33%	11%	52%	5%	194

**Favorability Rating – Ted Cruz  
(Likely 2016 GOP Primary Voters)**

<b>LIKELY NH GOP PRIMARY VOTERS</b>	<b><u>Favorable</u></b>	<b><u>Neutral</u></b>	<b><u>Unfavorable</u></b>	<b><u>Don't Know</u></b>	<b><u>(N)</u></b>
	<b>55%</b>	<b>8%</b>	<b>30%</b>	<b>7%</b>	<b>413</b>
Registered Undeclared	54%	9%	30%	8%	183
Registered Republican	55%	7%	31%	6%	226
Democrat	41%	12%	47%	0%	20
Independent	40%	15%	38%	7%	54
Republican	59%	7%	28%	7%	331
Liberal	24%	13%	42%	21%	17
Moderate	37%	8%	49%	5%	148
Conservative	72%	7%	16%	5%	222
Voted in 2008,2012 NH Primaries	61%	7%	28%	4%	297
Voted in 2008 or 2012 NH Primary	41%	11%	38%	10%	60
Did Not Vote in Either NH Primary	39%	11%	33%	17%	56
Union household	60%	8%	30%	2%	40
Non-union	54%	8%	31%	7%	368
Read Union Leader	62%	7%	27%	3%	92
Read Boston Globe	52%	10%	36%	3%	30
Read Local Newspapers	53%	12%	29%	7%	120
Watch WMUR	51%	11%	32%	6%	248
Listen to NHPR	45%	4%	47%	4%	90
Listen to Conserv. Talk Radio	84%	2%	10%	4%	83
18 to 34	57%	6%	29%	9%	85
35 to 49	56%	2%	32%	10%	106
50 to 64	55%	10%	30%	6%	141
65 and over	53%	13%	32%	2%	69
Male	58%	8%	28%	6%	219
Female	52%	8%	33%	8%	194
High school or less	57%	8%	26%	9%	77
Some college	59%	9%	23%	9%	113
College graduate	55%	6%	32%	7%	144
Post-graduate	46%	10%	43%	1%	77
Attend services 1 or more/week	66%	2%	29%	3%	107
1-2 times a month	59%	11%	22%	7%	51
Less often	58%	5%	30%	7%	112
Never	43%	13%	34%	10%	137
North Country	44%	12%	33%	11%	31
Central / Lakes	61%	7%	21%	11%	75
Connecticut Valley	53%	11%	32%	4%	51
Mass Border	56%	5%	32%	6%	119
Seacoast	54%	10%	32%	5%	66
Manchester Area	54%	8%	34%	4%	71
First Cong. Dist	57%	7%	29%	6%	219
Second Cong. Dist	53%	8%	32%	7%	194

**Favorability Rating – Carly Fiorina  
(Likely 2016 GOP Primary Voters)**

<b>LIKELY NH GOP PRIMARY VOTERS</b>	<b><u>Favorable</u></b> <b>49%</b>	<b><u>Neutral</u></b> <b>10%</b>	<b><u>Unfavorable</u></b> <b>30%</b>	<b><u>Don't Know</u></b> <b>11%</b>	<b><u>(N)</u></b> <b>413</b>
Registered Undeclared	41%	10%	37%	11%	183
Registered Republican	55%	10%	25%	11%	226
Democrat	54%	3%	26%	18%	20
Independent	45%	11%	42%	2%	54
Republican	50%	10%	28%	12%	331
Liberal	18%	0%	58%	23%	17
Moderate	50%	10%	29%	11%	148
Conservative	53%	9%	29%	9%	222
Voted in 2008,2012 NH Primaries	55%	9%	29%	7%	297
Voted in 2008 or 2012 NH Primary	35%	14%	37%	15%	60
Did Not Vote in Either NH Primary	28%	8%	31%	33%	56
Union household	42%	10%	32%	17%	40
Non-union	49%	10%	30%	11%	368
Read Union Leader	54%	11%	28%	8%	92
Read Boston Globe	59%	3%	31%	7%	30
Read Local Newspapers	47%	10%	29%	14%	120
Watch WMUR	50%	12%	29%	10%	248
Listen to NHPR	61%	8%	20%	11%	90
Listen to Conserv. Talk Radio	60%	4%	32%	4%	83
18 to 34	26%	15%	34%	25%	85
35 to 49	52%	14%	24%	9%	106
50 to 64	58%	6%	30%	7%	141
65 and over	56%	6%	30%	8%	69
Male	46%	6%	35%	13%	219
Female	52%	14%	26%	9%	194
High school or less	43%	4%	36%	18%	77
Some college	43%	12%	26%	19%	113
College graduate	51%	9%	33%	7%	144
Post-graduate	59%	15%	25%	1%	77
Attend services 1 or more/week	52%	11%	28%	9%	107
1-2 times a month	55%	17%	12%	15%	51
Less often	47%	7%	37%	10%	112
Never	46%	9%	31%	14%	137
North Country	34%	9%	43%	13%	31
Central / Lakes	51%	7%	29%	13%	75
Connecticut Valley	36%	7%	40%	17%	51
Mass Border	48%	11%	35%	7%	119
Seacoast	63%	11%	16%	10%	66
Manchester Area	49%	13%	25%	13%	71
First Cong. Dist	52%	10%	28%	10%	219
Second Cong. Dist	44%	9%	33%	13%	194

**Favorability Rating – Jim Gilmore  
(Likely 2016 GOP Primary Voters)**

<b>LIKELY NH GOP PRIMARY VOTERS</b>	<b><u>Favorable</u></b> <b>4%</b>	<b><u>Neutral</u></b> <b>12%</b>	<b><u>Unfavorable</u></b> <b>34%</b>	<b><u>Don't Know</u></b> <b>51%</b>	<b><u>(N)</u></b> <b>412</b>
Registered Undeclared	4%	9%	33%	54%	183
Registered Republican	4%	14%	34%	48%	226
Democrat	11%	13%	21%	55%	20
Independent	1%	21%	33%	44%	54
Republican	4%	10%	34%	51%	330
Liberal	0%	0%	50%	50%	17
Moderate	3%	13%	29%	55%	148
Conservative	4%	10%	37%	48%	222
Voted in 2008,2012 NH Primaries	3%	13%	38%	46%	296
Voted in 2008 or 2012 NH Primary	3%	16%	22%	59%	60
Did Not Vote in Either NH Primary	10%	1%	25%	65%	56
Union household	5%	7%	29%	59%	40
Non-union	3%	12%	34%	50%	368
Read Union Leader	7%	17%	39%	37%	92
Read Boston Globe	7%	11%	45%	37%	30
Read Local Newspapers	6%	9%	32%	54%	119
Watch WMUR	4%	11%	36%	50%	247
Listen to NHPR	5%	13%	30%	52%	90
Listen to Conserv. Talk Radio	4%	9%	44%	43%	82
18 to 34	8%	13%	23%	57%	85
35 to 49	2%	4%	35%	60%	106
50 to 64	3%	15%	37%	46%	141
65 and over	4%	15%	42%	40%	69
Male	5%	12%	39%	44%	218
Female	3%	12%	27%	58%	194
High school or less	9%	7%	34%	50%	77
Some college	3%	13%	32%	52%	112
College graduate	1%	13%	39%	47%	144
Post-graduate	3%	13%	28%	56%	77
Attend services 1 or more/week	8%	10%	36%	46%	107
1-2 times a month	2%	16%	22%	60%	51
Less often	2%	8%	37%	53%	112
Never	3%	15%	33%	49%	137
North Country	0%	3%	42%	55%	31
Central / Lakes	7%	11%	21%	61%	75
Connecticut Valley	2%	6%	40%	52%	51
Mass Border	5%	13%	41%	41%	118
Seacoast	2%	17%	29%	52%	66
Manchester Area	5%	13%	31%	51%	71
First Cong. Dist	2%	12%	31%	55%	219
Second Cong. Dist	6%	12%	37%	45%	193

**Favorability Rating – Mike Huckabee  
(Likely 2016 GOP Primary Voters)**

<b>LIKELY NH GOP PRIMARY VOTERS</b>	<b><u>Favorable</u></b> <b>32%</b>	<b><u>Neutral</u></b> <b>11%</b>	<b><u>Unfavorable</u></b> <b>49%</b>	<b><u>Don't Know</u></b> <b>8%</b>	<b><u>(N)</u></b> <b>413</b>
Registered Undeclared	25%	13%	50%	11%	183
Registered Republican	38%	10%	46%	6%	226
Democrat	38%	14%	43%	6%	20
Independent	24%	24%	49%	3%	54
Republican	33%	8%	49%	9%	331
Liberal	18%	2%	56%	23%	17
Moderate	24%	11%	57%	8%	148
Conservative	39%	11%	44%	6%	222
Voted in 2008,2012 NH Primaries	37%	11%	48%	4%	297
Voted in 2008 or 2012 NH Primary	25%	17%	43%	15%	60
Did Not Vote in Either NH Primary	13%	7%	59%	21%	56
Union household	50%	8%	41%	2%	40
Non-union	30%	11%	50%	9%	368
Read Union Leader	33%	12%	51%	4%	92
Read Boston Globe	27%	5%	64%	4%	30
Read Local Newspapers	32%	8%	51%	9%	120
Watch WMUR	31%	11%	50%	8%	248
Listen to NHPR	30%	4%	55%	11%	90
Listen to Conserv. Talk Radio	41%	11%	47%	1%	83
18 to 34	25%	13%	44%	18%	85
35 to 49	33%	10%	46%	12%	106
50 to 64	35%	11%	53%	1%	141
65 and over	31%	12%	53%	5%	69
Male	33%	9%	51%	6%	219
Female	31%	14%	46%	10%	194
High school or less	32%	4%	51%	13%	77
Some college	38%	17%	37%	8%	113
College graduate	30%	11%	53%	6%	144
Post-graduate	25%	10%	58%	7%	77
Attend services 1 or more/week	45%	7%	40%	8%	107
1-2 times a month	33%	16%	41%	9%	51
Less often	30%	7%	53%	10%	112
Never	23%	15%	54%	7%	137
North Country	31%	14%	45%	10%	31
Central / Lakes	38%	10%	37%	16%	75
Connecticut Valley	31%	8%	55%	7%	51
Mass Border	30%	11%	53%	7%	119
Seacoast	22%	14%	61%	3%	66
Manchester Area	40%	12%	40%	8%	71
First Cong. Dist	32%	12%	49%	7%	219
Second Cong. Dist	32%	10%	48%	9%	194

**Favorability Rating – John Kasich  
(Likely 2016 GOP Primary Voters)**

<b>LIKELY NH GOP PRIMARY VOTERS</b>	<b><u>Favorable</u></b>	<b><u>Neutral</u></b>	<b><u>Unfavorable</u></b>	<b><u>Don't Know</u></b>	<b><u>(N)</u></b>
	<b>38%</b>	<b>10%</b>	<b>37%</b>	<b>15%</b>	<b>413</b>
Registered Undeclared	39%	10%	35%	17%	183
Registered Republican	37%	10%	38%	14%	226
Democrat	52%	10%	24%	15%	20
Independent	39%	17%	32%	12%	54
Republican	37%	9%	39%	16%	331
Liberal	34%	12%	33%	21%	17
Moderate	51%	12%	21%	17%	148
Conservative	31%	10%	47%	12%	222
Voted in 2008,2012 NH Primaries	38%	10%	41%	12%	297
Voted in 2008 or 2012 NH Primary	32%	16%	33%	20%	60
Did Not Vote in Either NH Primary	40%	7%	23%	29%	56
Union household	42%	6%	36%	16%	40
Non-union	37%	11%	38%	15%	368
Read Union Leader	43%	11%	39%	8%	92
Read Boston Globe	64%	6%	29%	0%	30
Read Local Newspapers	45%	7%	33%	14%	120
Watch WMUR	44%	10%	35%	11%	248
Listen to NHPR	46%	12%	29%	13%	90
Listen to Conserv. Talk Radio	25%	11%	56%	8%	83
18 to 34	31%	14%	25%	31%	85
35 to 49	28%	11%	39%	22%	106
50 to 64	42%	7%	44%	7%	141
65 and over	53%	12%	30%	4%	69
Male	38%	10%	39%	14%	219
Female	37%	11%	35%	17%	194
High school or less	27%	5%	40%	29%	77
Some college	40%	9%	37%	14%	113
College graduate	35%	13%	39%	13%	144
Post-graduate	50%	12%	30%	8%	77
Attend services 1 or more/week	39%	9%	39%	13%	107
1-2 times a month	40%	18%	29%	13%	51
Less often	42%	7%	40%	11%	112
Never	33%	10%	35%	22%	137
North Country	29%	14%	29%	28%	31
Central / Lakes	39%	9%	34%	18%	75
Connecticut Valley	30%	7%	51%	12%	51
Mass Border	40%	7%	36%	17%	119
Seacoast	46%	12%	32%	10%	66
Manchester Area	34%	15%	39%	12%	71
First Cong. Dist	36%	12%	37%	15%	219
Second Cong. Dist	39%	8%	37%	16%	194

**Favorability Rating – Rand Paul  
(Likely 2016 GOP Primary Voters)**

<b>LIKELY NH GOP PRIMARY VOTERS</b>	<b><u>Favorable</u></b> <b>34%</b>	<b><u>Neutral</u></b> <b>11%</b>	<b><u>Unfavorable</u></b> <b>49%</b>	<b><u>Don't Know</u></b> <b>7%</b>	<b><u>(N)</u></b> <b>413</b>
Registered Undeclared	35%	12%	47%	6%	183
Registered Republican	33%	9%	51%	8%	226
Democrat	42%	5%	46%	6%	20
Independent	45%	13%	37%	5%	54
Republican	32%	10%	51%	7%	331
Liberal	20%	5%	66%	9%	17
Moderate	33%	10%	50%	6%	148
Conservative	36%	9%	47%	7%	222
Voted in 2008,2012 NH Primaries	33%	10%	51%	6%	297
Voted in 2008 or 2012 NH Primary	43%	7%	45%	5%	60
Did Not Vote in Either NH Primary	25%	17%	44%	14%	56
Union household	36%	9%	53%	2%	40
Non-union	33%	11%	49%	7%	368
Read Union Leader	35%	12%	51%	1%	92
Read Boston Globe	28%	14%	56%	2%	30
Read Local Newspapers	28%	9%	58%	6%	120
Watch WMUR	31%	9%	55%	6%	248
Listen to NHPR	35%	5%	49%	12%	90
Listen to Conserv. Talk Radio	41%	8%	50%	1%	83
18 to 34	46%	13%	32%	10%	85
35 to 49	33%	13%	43%	11%	106
50 to 64	31%	9%	57%	4%	141
65 and over	25%	9%	62%	4%	69
Male	37%	8%	50%	6%	219
Female	30%	14%	48%	8%	194
High school or less	35%	8%	48%	9%	77
Some college	39%	8%	45%	8%	113
College graduate	27%	14%	55%	4%	144
Post-graduate	36%	12%	44%	8%	77
Attend services 1 or more/week	32%	9%	50%	9%	107
1-2 times a month	29%	9%	50%	13%	51
Less often	36%	6%	52%	6%	112
Never	36%	17%	43%	3%	137
North Country	32%	12%	55%	0%	31
Central / Lakes	34%	13%	44%	9%	75
Connecticut Valley	27%	15%	56%	2%	51
Mass Border	38%	5%	49%	9%	119
Seacoast	32%	14%	49%	5%	66
Manchester Area	33%	12%	47%	8%	71
First Cong. Dist	35%	11%	48%	6%	219
Second Cong. Dist	32%	10%	50%	8%	194

**Favorability Rating – Marco Rubio  
(Likely 2016 GOP Primary Voters)**

<b>LIKELY NH GOP PRIMARY VOTERS</b>	<b><u>Favorable</u></b> <b>58%</b>	<b><u>Neutral</u></b> <b>7%</b>	<b><u>Unfavorable</u></b> <b>32%</b>	<b><u>Don't Know</u></b> <b>4%</b>	<b><u>(N)</u></b> <b>413</b>
Registered Undeclared	53%	5%	38%	5%	183
Registered Republican	63%	9%	26%	3%	226
Democrat	36%	10%	44%	10%	20
Independent	47%	7%	43%	3%	54
Republican	62%	6%	28%	3%	331
Liberal	48%	5%	30%	17%	17
Moderate	57%	5%	37%	1%	148
Conservative	62%	8%	26%	4%	222
Voted in 2008,2012 NH Primaries	60%	8%	29%	3%	297
Voted in 2008 or 2012 NH Primary	48%	5%	40%	7%	60
Did Not Vote in Either NH Primary	59%	2%	35%	4%	56
Union household	58%	1%	32%	9%	40
Non-union	58%	8%	32%	2%	368
Read Union Leader	66%	7%	25%	1%	92
Read Boston Globe	55%	11%	30%	4%	30
Read Local Newspapers	59%	4%	32%	4%	120
Watch WMUR	61%	7%	29%	3%	248
Listen to NHPR	59%	6%	32%	3%	90
Listen to Conserv. Talk Radio	63%	7%	29%	1%	83
18 to 34	49%	6%	37%	8%	85
35 to 49	60%	7%	31%	2%	106
50 to 64	60%	6%	31%	3%	141
65 and over	63%	9%	27%	1%	69
Male	49%	8%	38%	4%	219
Female	68%	5%	24%	3%	194
High school or less	52%	6%	36%	6%	77
Some college	62%	6%	27%	5%	113
College graduate	57%	8%	33%	3%	144
Post-graduate	60%	8%	32%	0%	77
Attend services 1 or more/week	62%	7%	30%	1%	107
1-2 times a month	72%	9%	12%	7%	51
Less often	55%	7%	34%	4%	112
Never	54%	4%	38%	4%	137
North Country	55%	8%	32%	5%	31
Central / Lakes	55%	8%	31%	6%	75
Connecticut Valley	45%	4%	48%	3%	51
Mass Border	56%	7%	34%	3%	119
Seacoast	66%	5%	27%	2%	66
Manchester Area	68%	7%	20%	4%	71
First Cong. Dist	64%	7%	26%	3%	219
Second Cong. Dist	52%	6%	38%	4%	194



**Favorability Rating – Rick Santorum  
(Likely 2016 GOP Primary Voters)**

<b>LIKELY NH GOP PRIMARY VOTERS</b>	<b><u>Favorable</u></b> <b>21%</b>	<b><u>Neutral</u></b> <b>13%</b>	<b><u>Unfavorable</u></b> <b>50%</b>	<b><u>Don't Know</u></b> <b>17%</b>	<b><u>(N)</u></b> <b>412</b>
Registered Undeclared	15%	14%	52%	19%	183
Registered Republican	25%	12%	47%	15%	225
Democrat	22%	7%	45%	25%	20
Independent	14%	23%	48%	15%	54
Republican	21%	12%	50%	17%	330
Liberal	9%	11%	47%	33%	17
Moderate	13%	13%	56%	19%	147
Conservative	27%	13%	47%	12%	222
Voted in 2008,2012 NH Primaries	25%	13%	51%	11%	297
Voted in 2008 or 2012 NH Primary	11%	18%	43%	29%	59
Did Not Vote in Either NH Primary	10%	7%	51%	32%	56
Union household	24%	15%	38%	23%	40
Non-union	20%	13%	51%	16%	367
Read Union Leader	26%	11%	55%	8%	92
Read Boston Globe	18%	6%	65%	11%	30
Read Local Newspapers	18%	17%	47%	18%	120
Watch WMUR	21%	14%	49%	16%	248
Listen to NHPR	21%	9%	52%	18%	90
Listen to Conserv. Talk Radio	33%	11%	50%	6%	83
18 to 34	12%	15%	45%	27%	85
35 to 49	17%	10%	51%	23%	106
50 to 64	26%	13%	51%	11%	140
65 and over	20%	17%	54%	8%	69
Male	22%	12%	50%	16%	219
Female	19%	15%	49%	17%	193
High school or less	17%	2%	58%	23%	77
Some college	21%	18%	44%	17%	113
College graduate	22%	14%	49%	14%	143
Post-graduate	20%	15%	50%	15%	77
Attend services 1 or more/week	31%	15%	41%	13%	107
1-2 times a month	24%	17%	37%	21%	51
Less often	15%	11%	56%	18%	112
Never	14%	12%	56%	17%	136
North Country	17%	5%	58%	19%	31
Central / Lakes	25%	10%	45%	20%	75
Connecticut Valley	23%	13%	49%	15%	50
Mass Border	16%	13%	52%	19%	119
Seacoast	21%	17%	49%	13%	66
Manchester Area	23%	17%	47%	14%	71
First Cong. Dist	21%	13%	49%	17%	219
Second Cong. Dist	20%	13%	51%	17%	193

**Favorability Rating – Donald Trump  
(Likely 2016 GOP Primary Voters)**

<b>LIKELY NH GOP PRIMARY VOTERS</b>	<b><u>Favorable</u></b>	<b><u>Neutral</u></b>	<b><u>Unfavorable</u></b>	<b><u>Don't Know</u></b>	<b><u>(N)</u></b>
	<b>54%</b>	<b>5%</b>	<b>40%</b>	<b>1%</b>	<b>411</b>
Registered Undeclared	56%	4%	40%	1%	183
Registered Republican	52%	7%	41%	1%	225
Democrat	19%	0%	81%	0%	20
Independent	53%	0%	47%	0%	54
Republican	57%	6%	36%	1%	329
Liberal	74%	0%	26%	0%	17
Moderate	44%	8%	47%	1%	146
Conservative	58%	4%	38%	1%	222
Voted in 2008,2012 NH Primaries	55%	5%	40%	1%	295
Voted in 2008 or 2012 NH Primary	54%	7%	39%	1%	60
Did Not Vote in Either NH Primary	49%	7%	45%	0%	56
Union household	48%	0%	50%	2%	40
Non-union	55%	6%	39%	1%	367
Read Union Leader	50%	8%	42%	1%	91
Read Boston Globe	60%	4%	36%	0%	30
Read Local Newspapers	51%	5%	43%	1%	119
Watch WMUR	52%	6%	42%	0%	247
Listen to NHPR	42%	8%	50%	0%	90
Listen to Conserv. Talk Radio	70%	4%	26%	0%	83
18 to 34	40%	11%	49%	0%	85
35 to 49	58%	3%	39%	0%	105
50 to 64	58%	4%	36%	1%	140
65 and over	54%	3%	42%	2%	69
Male	59%	8%	32%	1%	218
Female	47%	2%	49%	1%	194
High school or less	60%	5%	34%	1%	77
Some college	54%	6%	38%	2%	112
College graduate	54%	5%	40%	0%	143
Post-graduate	47%	4%	49%	0%	77
Attend services 1 or more/week	44%	8%	48%	0%	105
1-2 times a month	33%	4%	61%	2%	51
Less often	61%	5%	34%	1%	112
Never	64%	4%	32%	1%	137
North Country	59%	5%	33%	3%	31
Central / Lakes	60%	3%	36%	2%	75
Connecticut Valley	61%	2%	35%	1%	50
Mass Border	51%	7%	42%	0%	119
Seacoast	51%	6%	43%	0%	66
Manchester Area	47%	7%	46%	0%	71
First Cong. Dist	48%	6%	46%	0%	219
Second Cong. Dist	60%	4%	34%	1%	192

**Decided 2016 GOP Primary Vote  
(Likely 2016 GOP Primary Voters)**

	<b>Def. <u>Decided</u></b>	<b>Leaning <u>Towards Someone</u></b>	<b>Still Trying <u>To Decide</u></b>	<b>(N)</b>
<b>LIKELY NH GOP PRIMARY VOTERS</b>	<b>31%</b>	<b>26%</b>	<b>43%</b>	<b>412</b>
Registered Undeclared	29%	24%	47%	183
Registered Republican	32%	28%	40%	226
Democrat	23%	18%	59%	19
Independent	39%	23%	38%	54
Republican	30%	28%	43%	331
Liberal	51%	21%	29%	17
Moderate	29%	21%	51%	147
Conservative	29%	32%	39%	222
Voted in 2008,2012 NH Primaries	30%	26%	44%	296
Voted in 2008 or 2012 NH Primary	34%	28%	39%	60
Did Not Vote in Either NH Primary	30%	27%	43%	56
Union household	32%	26%	42%	40
Non-union	31%	26%	43%	368
Read Union Leader	29%	20%	51%	92
Read Boston Globe	36%	26%	38%	30
Read Local Newspapers	27%	25%	48%	119
Watch WMUR	27%	23%	50%	247
Listen to NHPR	22%	27%	51%	89
Listen to Conserv. Talk Radio	32%	30%	37%	83
18 to 34	35%	28%	37%	85
35 to 49	25%	26%	50%	106
50 to 64	30%	29%	40%	141
65 and over	35%	20%	45%	69
Male	31%	28%	41%	219
Female	30%	25%	45%	193
High school or less	39%	25%	36%	77
Some college	29%	29%	42%	113
College graduate	27%	23%	50%	143
Post-graduate	33%	29%	39%	77
Attend services 1 or more/week	29%	28%	43%	106
1-2 times a month	15%	29%	56%	51
Less often	27%	30%	43%	112
Never	41%	20%	39%	137
North Country	41%	17%	42%	30
Central / Lakes	27%	25%	48%	75
Connecticut Valley	43%	28%	30%	51
Mass Border	26%	34%	40%	119
Seacoast	28%	18%	54%	66
Manchester Area	30%	27%	43%	71
First Cong. Dist	28%	23%	50%	219
Second Cong. Dist	34%	31%	35%	193

**GOP 2016 Primary Support**  
**(Likely 2016 GOP Primary Voters)**

	<b>Donald <u>Trump</u></b>	<b>Ted <u>Cruz</u></b>	<b>Marco <u>Rubio</u></b>	<b>Jeb <u>Bush</u></b>	<b>Rand <u>Paul</u></b>	<b>Chris <u>Christie</u></b>	<b>John <u>Kasich</u></b>	<b>Someone <u>Else</u></b>	<b><u>Undecided</u></b>	<b>(N=)</b>
<b>LIKELY NH GOP PRIMARY VOTERS</b>	<b>34%</b>	<b>14%</b>	<b>10%</b>	<b>10%</b>	<b>6%</b>	<b>6%</b>	<b>6%</b>	<b>8%</b>	<b>6%</b>	<b>408</b>
Registered Undeclared	37%	11%	8%	9%	9%	8%	4%	9%	5%	182
Registered Republican	32%	16%	11%	11%	4%	4%	7%	7%	8%	222
Democrat	20%	7%	0%	22%	0%	12%	25%	4%	10%	19
Independent	39%	8%	5%	2%	18%	10%	7%	4%	6%	52
Republican	34%	15%	11%	10%	5%	5%	5%	8%	6%	329
Liberal	74%	4%	0%	9%	0%	3%	11%	0%	0%	15
Moderate	22%	6%	10%	14%	7%	9%	9%	17%	6%	146
Conservative	37%	22%	11%	6%	6%	4%	4%	3%	7%	221
Voted in 2008,2012 NH Primaries	31%	16%	9%	9%	5%	7%	5%	9%	7%	293
Voted in 2008 or 2012 NH Primary	41%	9%	7%	6%	17%	7%	6%	5%	2%	60
Did Not Vote in Either NH Primary	41%	8%	15%	16%	0%	1%	9%	4%	5%	55
Union household	35%	8%	7%	9%	11%	6%	4%	6%	12%	39
Non-union	34%	15%	10%	10%	6%	6%	6%	8%	6%	365
Read Union Leader	24%	19%	8%	17%	5%	7%	9%	5%	6%	92
Read Boston Globe	46%	7%	7%	14%	0%	8%	10%	4%	2%	30
Read Local Newspapers	32%	10%	10%	12%	4%	6%	10%	11%	7%	119
Watch WMUR	31%	12%	10%	11%	5%	9%	8%	7%	6%	246
Listen to NHPR	25%	5%	13%	11%	9%	10%	6%	11%	10%	89
Listen to Conserv. Talk Radio	41%	34%	6%	1%	5%	3%	1%	2%	8%	82
18 to 34	34%	16%	11%	11%	13%	3%	2%	5%	4%	83
35 to 49	40%	11%	8%	4%	8%	7%	2%	10%	8%	106
50 to 64	36%	15%	10%	12%	3%	6%	7%	9%	4%	140
65 and over	22%	15%	13%	10%	2%	9%	13%	7%	9%	68
Male	38%	14%	8%	11%	7%	4%	4%	8%	7%	216
Female	30%	15%	12%	8%	6%	8%	8%	8%	6%	192
High school or less	43%	20%	10%	12%	6%	2%	2%	1%	4%	77
Some college	39%	14%	10%	10%	5%	5%	6%	8%	4%	113
College graduate	30%	12%	12%	7%	4%	8%	8%	10%	9%	139
Post-graduate	26%	13%	5%	12%	12%	8%	5%	11%	7%	77
Attend services 1 or more/week	27%	23%	12%	11%	0%	1%	6%	12%	9%	106
1-2 times a month	17%	14%	14%	17%	5%	13%	0%	9%	11%	51
Less often	39%	10%	9%	8%	8%	7%	6%	7%	6%	111
Never	43%	11%	8%	5%	10%	7%	8%	6%	3%	135
North Country	49%	12%	11%	14%	4%	3%	5%	0%	4%	30
Central / Lakes	31%	9%	10%	11%	7%	9%	6%	8%	9%	75
Connecticut Valley	43%	7%	16%	10%	4%	1%	4%	14%	1%	51
Mass Border	35%	15%	7%	10%	4%	7%	5%	8%	7%	118
Seacoast	25%	14%	10%	9%	8%	2%	9%	13%	10%	66
Manchester Area	31%	24%	9%	6%	9%	11%	5%	2%	4%	69
First Cong. Dist	27%	18%	8%	10%	8%	8%	6%	8%	7%	215
Second Cong. Dist	42%	10%	12%	9%	4%	4%	6%	7%	6%	193

**GOP 2016 Primary – Second Choice  
(Likely 2016 GOP Primary Voters)**

	<b>Ted <u>Cruz</u></b>	<b>Marco <u>Rubio</u></b>	<b>Chris <u>Christie</u></b>	<b>Jeb <u>Bush</u></b>	<b>Donald <u>Trump</u></b>	<b>Someone <u>Else</u></b>	<b>No Second <u>Choice</u></b>	<b>Don't <u>Know</u></b>	<b>(N=)</b>
<b>LIKELY NH GOP PRIMARY VOTERS</b>	<b>20%</b>	<b>19%</b>	<b>11%</b>	<b>10%</b>	<b>8%</b>	<b>22%</b>	<b>4%</b>	<b>5%</b>	<b>382</b>
Registered Undeclared	20%	20%	10%	12%	7%	22%	3%	6%	174
Registered Republican	19%	19%	12%	9%	9%	22%	5%	5%	205
Democrat	0%	6%	22%	22%	0%	36%	12%	2%	17
Independent	13%	22%	4%	12%	3%	30%	4%	12%	49
Republican	23%	20%	11%	10%	10%	19%	3%	5%	310
Liberal	12%	11%	29%	6%	4%	7%	15%	17%	15
Moderate	11%	19%	12%	18%	7%	23%	3%	6%	137
Conservative	26%	21%	9%	6%	10%	23%	3%	3%	206
Voted in 2008,2012 NH Primaries	22%	21%	10%	10%	10%	20%	3%	4%	271
Voted in 2008 or 2012 NH Primary	13%	12%	7%	12%	3%	35%	8%	11%	59
Did Not Vote in Either NH Primary	19%	17%	17%	13%	5%	21%	2%	6%	52
Union household	30%	16%	2%	17%	8%	19%	2%	6%	34
Non-union	19%	19%	12%	10%	8%	22%	4%	5%	345
Read Union Leader	18%	21%	15%	6%	7%	27%	2%	4%	86
Read Boston Globe	24%	26%	16%	9%	3%	16%	6%	0%	29
Read Local Newspapers	20%	19%	9%	12%	5%	24%	5%	6%	111
Watch WMUR	17%	20%	11%	11%	8%	20%	5%	7%	231
Listen to NHPR	17%	15%	17%	17%	10%	21%	1%	3%	80
Listen to Conserv. Talk Radio	31%	28%	5%	5%	11%	15%	4%	2%	76
18 to 34	20%	12%	6%	10%	6%	35%	2%	8%	80
35 to 49	19%	23%	11%	16%	4%	20%	2%	4%	97
50 to 64	21%	20%	12%	7%	12%	19%	6%	5%	134
65 and over	16%	20%	13%	11%	10%	20%	6%	3%	61
Male	25%	16%	9%	7%	10%	23%	4%	7%	202
Female	14%	23%	13%	14%	6%	21%	4%	4%	180
High school or less	20%	18%	6%	9%	9%	25%	4%	9%	75
Some college	22%	21%	9%	6%	7%	25%	4%	6%	108
College graduate	18%	17%	13%	13%	12%	17%	5%	4%	127
Post-graduate	21%	21%	14%	14%	3%	25%	1%	2%	71
Attend services 1 or more/week	22%	21%	11%	6%	4%	29%	3%	5%	97
1-2 times a month	10%	13%	19%	22%	10%	26%	0%	0%	45
Less often	25%	15%	7%	14%	11%	15%	8%	6%	105
Never	19%	24%	10%	8%	8%	22%	3%	6%	131
North Country	16%	25%	7%	0%	10%	30%	7%	5%	29
Central / Lakes	18%	11%	15%	13%	15%	21%	1%	5%	68
Connecticut Valley	26%	13%	12%	7%	3%	20%	12%	7%	51
Mass Border	23%	20%	9%	13%	6%	21%	2%	5%	109
Seacoast	24%	26%	10%	15%	8%	16%	0%	2%	59
Manchester Area	11%	22%	9%	7%	7%	29%	6%	9%	66
First Cong. Dist	17%	22%	12%	12%	9%	21%	1%	6%	200
Second Cong. Dist	23%	16%	9%	8%	8%	24%	7%	5%	182

**GOP 2016 Primary – Would NOT Support  
(Likely 2016 GOP Primary Voters)**

	<b>Donald <u>Trump</u></b>	<b>Jeb <u>Bush</u></b>	<b>Chris <u>Christie</u></b>	<b>Rand <u>Paul</u></b>	<b>Carly <u>Fiorina</u></b>	<b>Someone <u>Else</u></b>	<b>All <u>Acceptable</u></b>	<b>Don't <u>Know</u></b>	<b>(N=)</b>
<b>LIKELY NH GOP PRIMARY VOTERS</b>	<b>30%</b>	<b>18%</b>	<b>9%</b>	<b>5%</b>	<b>4%</b>	<b>18%</b>	<b>10%</b>	<b>6%</b>	<b>406</b>
Registered Undeclared	28%	20%	11%	6%	4%	18%	5%	9%	182
Registered Republican	32%	17%	8%	5%	4%	17%	14%	4%	220
Democrat	58%	10%	13%	0%	0%	9%	0%	9%	18
Independent	33%	14%	16%	5%	2%	10%	11%	9%	52
Republican	27%	20%	7%	6%	4%	20%	10%	5%	328
Liberal	9%	35%	11%	4%	5%	28%	5%	3%	13
Moderate	39%	10%	7%	3%	4%	26%	7%	5%	146
Conservative	25%	23%	11%	6%	4%	13%	11%	7%	222
Voted in 2008,2012 NH Primaries	29%	19%	8%	7%	5%	19%	9%	4%	292
Voted in 2008 or 2012 NH Primary	26%	20%	11%	0%	3%	17%	14%	9%	59
Did Not Vote in Either NH Primary	38%	10%	11%	3%	0%	12%	12%	14%	55
Union household	28%	20%	8%	7%	9%	22%	3%	2%	38
Non-union	30%	18%	9%	5%	3%	17%	11%	6%	363
Read Union Leader	33%	13%	7%	4%	4%	23%	12%	5%	92
Read Boston Globe	27%	15%	3%	11%	0%	36%	5%	2%	29
Read Local Newspapers	35%	16%	8%	6%	3%	15%	11%	7%	118
Watch WMUR	31%	14%	9%	6%	4%	18%	10%	7%	244
Listen to NHPR	42%	15%	6%	5%	3%	21%	5%	3%	89
Listen to Conserv. Talk Radio	18%	37%	10%	8%	4%	13%	6%	5%	83
18 to 34	36%	13%	10%	4%	3%	16%	9%	7%	81
35 to 49	31%	26%	11%	4%	6%	16%	4%	3%	105
50 to 64	26%	19%	10%	5%	3%	21%	10%	6%	139
65 and over	29%	12%	4%	9%	3%	14%	21%	8%	68
Male	24%	21%	7%	6%	4%	19%	13%	6%	216
Female	36%	15%	11%	4%	4%	17%	6%	6%	190
High school or less	26%	12%	23%	4%	2%	21%	7%	5%	76
Some college	28%	17%	8%	5%	4%	12%	17%	8%	111
College graduate	32%	18%	4%	6%	6%	19%	9%	6%	141
Post-graduate	32%	26%	5%	6%	3%	22%	4%	3%	77
Attend services 1 or more/week	37%	13%	8%	7%	4%	15%	11%	5%	105
1-2 times a month	47%	22%	7%	5%	0%	7%	4%	9%	51
Less often	22%	18%	10%	4%	5%	22%	13%	6%	110
Never	25%	20%	10%	5%	4%	22%	10%	6%	134
North Country	26%	19%	21%	10%	0%	13%	6%	4%	30
Central / Lakes	29%	17%	7%	4%	5%	14%	15%	10%	74
Connecticut Valley	33%	23%	1%	6%	1%	14%	16%	6%	49
Mass Border	28%	21%	11%	7%	5%	22%	3%	4%	119
Seacoast	26%	15%	11%	7%	3%	18%	16%	4%	66
Manchester Area	39%	13%	6%	1%	5%	19%	7%	9%	67
First Cong. Dist	32%	17%	9%	6%	6%	16%	10%	5%	217
Second Cong. Dist	28%	20%	9%	5%	2%	19%	10%	8%	188

**Who has the Personal Characteristics and Qualities a President Should Have?  
(Likely 2016 GOP Primary Voters)**

	<b>Donald <u>Trump</u></b>	<b>Ted <u>Cruz</u></b>	<b>Marco <u>Rubio</u></b>	<b>Jeb <u>Bush</u></b>	<b>John <u>Kasich</u></b>	<b>Chris <u>Christie</u></b>	<b>Someone <u>Else</u></b>	<b>Don't <u>Know</u></b>	<b>(N=)</b>
<b>LIKELY NH GOP PRIMARY VOTERS</b>	<b>16%</b>	<b>16%</b>	<b>14%</b>	<b>13%</b>	<b>7%</b>	<b>6%</b>	<b>18%</b>	<b>9%</b>	<b>409</b>
Registered Undeclared	18%	13%	12%	13%	9%	6%	19%	10%	183
Registered Republican	16%	19%	15%	13%	6%	6%	17%	8%	222
Democrat	7%	5%	13%	31%	19%	0%	6%	18%	18
Independent	17%	8%	9%	4%	12%	5%	26%	18%	54
Republican	17%	18%	15%	14%	6%	7%	17%	7%	329
Liberal	34%	4%	6%	13%	9%	10%	11%	14%	16
Moderate	13%	7%	9%	19%	13%	10%	19%	11%	145
Conservative	15%	25%	18%	8%	4%	4%	18%	6%	221
Voted in 2008,2012 NH Primaries	13%	20%	14%	12%	7%	7%	18%	8%	293
Voted in 2008 or 2012 NH Primary	23%	6%	10%	5%	7%	5%	26%	18%	60
Did Not Vote in Either NH Primary	25%	8%	15%	28%	11%	1%	6%	7%	56
Union household	13%	6%	8%	21%	4%	9%	23%	15%	40
Non-union	17%	17%	14%	12%	8%	6%	17%	8%	365
Read Union Leader	13%	19%	10%	14%	13%	9%	12%	10%	91
Read Boston Globe	24%	7%	16%	22%	11%	1%	15%	3%	28
Read Local Newspapers	14%	11%	14%	16%	11%	6%	20%	8%	117
Watch WMUR	16%	15%	14%	14%	10%	7%	14%	10%	245
Listen to NHPR	13%	9%	15%	20%	8%	9%	17%	10%	89
Listen to Conserv. Talk Radio	17%	43%	15%	2%	3%	2%	11%	8%	82
18 to 34	19%	14%	11%	16%	3%	2%	26%	10%	85
35 to 49	17%	14%	14%	11%	2%	10%	19%	11%	106
50 to 64	15%	22%	15%	12%	9%	5%	16%	5%	138
65 and over	15%	11%	15%	13%	17%	9%	10%	10%	68
Male	19%	17%	11%	15%	5%	3%	19%	10%	216
Female	14%	16%	16%	10%	10%	10%	16%	8%	192
High school or less	23%	21%	10%	20%	2%	2%	14%	7%	77
Some college	19%	13%	14%	11%	7%	4%	23%	8%	113
College graduate	10%	20%	17%	11%	9%	9%	14%	12%	140
Post-graduate	18%	11%	10%	13%	11%	10%	21%	6%	77
Attend services 1 or more/week	12%	27%	11%	13%	9%	4%	16%	8%	106
1-2 times a month	6%	17%	21%	18%	4%	10%	16%	7%	51
Less often	18%	12%	13%	14%	7%	7%	22%	6%	112
Never	23%	12%	14%	8%	8%	6%	16%	13%	135
North Country	43%	12%	17%	14%	2%	3%	6%	4%	30
Central / Lakes	12%	16%	10%	14%	5%	14%	20%	9%	72
Connecticut Valley	23%	8%	22%	6%	6%	1%	23%	11%	51
Mass Border	13%	16%	14%	16%	9%	4%	20%	8%	118
Seacoast	16%	17%	9%	16%	11%	5%	14%	12%	65
Manchester Area	12%	25%	12%	9%	8%	10%	16%	9%	71
First Cong. Dist	13%	20%	10%	15%	7%	9%	18%	8%	217
Second Cong. Dist	21%	13%	17%	11%	8%	3%	17%	10%	191

**Who Can Best Handle Economy?  
(Likely 2016 GOP Primary Voters)**

	<b>Donald <u>Trump</u></b>	<b>Ted <u>Cruz</u></b>	<b>Jeb <u>Bush</u></b>	<b>John <u>Kasich</u></b>	<b>Carly <u>Fiorina</u></b>	<b>Chris <u>Christie</u></b>	<b>Someone <u>Else</u></b>	<b>Don't <u>Know</u></b>	<b>(N=)</b>
<b>LIKELY NH GOP PRIMARY VOTERS</b>	<b>48%</b>	<b>7%</b>	<b>7%</b>	<b>7%</b>	<b>6%</b>	<b>6%</b>	<b>11%</b>	<b>9%</b>	<b>412</b>
Registered Undeclared	51%	5%	7%	5%	4%	7%	15%	7%	183
Registered Republican	44%	9%	7%	8%	7%	5%	9%	10%	225
Democrat	15%	5%	12%	25%	14%	7%	0%	22%	19
Independent	40%	7%	2%	7%	5%	12%	16%	11%	54
Republican	51%	7%	7%	5%	6%	5%	11%	7%	331
Liberal	71%	0%	4%	10%	0%	0%	0%	16%	17
Moderate	36%	4%	7%	12%	10%	9%	10%	11%	147
Conservative	53%	10%	6%	3%	4%	4%	14%	7%	222
Voted in 2008,2012 NH Primaries	47%	8%	6%	6%	7%	6%	11%	9%	296
Voted in 2008 or 2012 NH Primary	49%	8%	6%	7%	6%	7%	11%	6%	60
Did Not Vote in Either NH Primary	50%	0%	15%	11%	2%	1%	12%	9%	56
Union household	44%	3%	3%	11%	7%	6%	15%	11%	40
Non-union	49%	8%	7%	6%	6%	6%	10%	8%	367
Read Union Leader	39%	12%	10%	8%	3%	8%	10%	11%	92
Read Boston Globe	42%	7%	18%	11%	4%	7%	7%	3%	30
Read Local Newspapers	44%	5%	8%	10%	7%	5%	13%	7%	119
Watch WMUR	45%	7%	8%	8%	6%	8%	10%	8%	247
Listen to NHPR	39%	1%	11%	9%	11%	7%	12%	10%	89
Listen to Conserv. Talk Radio	59%	16%	2%	1%	2%	2%	12%	6%	82
18 to 34	44%	8%	9%	3%	5%	3%	21%	7%	85
35 to 49	49%	7%	4%	5%	9%	8%	11%	8%	106
50 to 64	53%	6%	8%	7%	5%	4%	8%	8%	141
65 and over	40%	5%	5%	13%	6%	9%	9%	13%	68
Male	55%	6%	7%	6%	5%	3%	11%	7%	219
Female	40%	8%	7%	7%	7%	9%	12%	10%	193
High school or less	59%	6%	7%	2%	3%	2%	13%	7%	77
Some college	48%	8%	9%	4%	3%	5%	12%	11%	113
College graduate	47%	7%	5%	10%	7%	8%	8%	9%	143
Post-graduate	39%	6%	7%	10%	11%	6%	14%	6%	77
Attend services 1 or more/week	39%	14%	7%	9%	7%	1%	8%	15%	106
1-2 times a month	35%	2%	15%	0%	10%	15%	16%	8%	51
Less often	52%	8%	5%	6%	7%	5%	13%	5%	112
Never	55%	3%	5%	8%	3%	7%	11%	8%	137
North Country	55%	8%	11%	7%	0%	1%	11%	8%	30
Central / Lakes	46%	5%	9%	8%	7%	10%	9%	7%	75
Connecticut Valley	54%	6%	11%	1%	5%	2%	13%	7%	51
Mass Border	50%	7%	5%	8%	4%	6%	11%	8%	119
Seacoast	48%	9%	7%	10%	9%	1%	9%	7%	66
Manchester Area	38%	7%	4%	4%	7%	9%	15%	15%	71
First Cong. Dist	43%	8%	9%	7%	5%	7%	12%	8%	219
Second Cong. Dist	53%	5%	5%	6%	6%	4%	10%	9%	193



**Who Can Best Handle ISIS?  
(Likely 2016 GOP Primary Voters)**

	<b>Donald <u>Trump</u></b>	<b>Ted <u>Cruz</u></b>	<b>Jeb <u>Bush</u></b>	<b>Marco <u>Rubio</u></b>	<b>Chris <u>Christie</u></b>	<b>John <u>Kasich</u></b>	<b>Someone <u>Else</u></b>	<b>Don't <u>Know</u></b>	<b>(N=)</b>
<b>LIKELY NH GOP PRIMARY VOTERS</b>	<b>32%</b>	<b>14%</b>	<b>12%</b>	<b>10%</b>	<b>7%</b>	<b>4%</b>	<b>8%</b>	<b>13%</b>	<b>409</b>
Registered Undeclared	37%	13%	11%	8%	8%	4%	8%	13%	181
Registered Republican	28%	15%	13%	12%	7%	4%	8%	13%	224
Democrat	15%	15%	37%	0%	3%	11%	6%	15%	19
Independent	34%	13%	12%	7%	7%	5%	13%	10%	54
Republican	33%	14%	11%	12%	8%	3%	7%	13%	328
Liberal	59%	4%	0%	0%	8%	6%	18%	5%	15
Moderate	24%	7%	21%	7%	11%	4%	9%	17%	146
Conservative	33%	21%	7%	14%	5%	3%	7%	10%	222
Voted in 2008,2012 NH Primaries	31%	16%	11%	11%	8%	3%	8%	12%	295
Voted in 2008 or 2012 NH Primary	36%	12%	11%	5%	7%	6%	14%	10%	59
Did Not Vote in Either NH Primary	33%	7%	17%	12%	4%	5%	2%	19%	56
Union household	34%	13%	11%	6%	5%	2%	17%	12%	40
Non-union	32%	14%	12%	11%	7%	4%	7%	12%	365
Read Union Leader	21%	21%	19%	7%	11%	5%	6%	11%	92
Read Boston Globe	39%	8%	22%	1%	11%	8%	7%	5%	30
Read Local Newspapers	29%	11%	16%	8%	9%	5%	9%	14%	118
Watch WMUR	28%	14%	13%	13%	8%	5%	5%	13%	247
Listen to NHPR	25%	6%	13%	12%	8%	5%	12%	19%	89
Listen to Conserv. Talk Radio	35%	26%	3%	13%	6%	1%	7%	9%	82
18 to 34	30%	11%	18%	9%	6%	0%	13%	12%	85
35 to 49	37%	13%	9%	10%	7%	4%	10%	10%	104
50 to 64	31%	18%	12%	11%	8%	4%	5%	10%	140
65 and over	27%	13%	10%	12%	9%	8%	4%	17%	68
Male	37%	13%	13%	8%	7%	4%	9%	10%	218
Female	27%	15%	10%	13%	8%	4%	7%	16%	192
High school or less	41%	16%	14%	9%	5%	2%	4%	8%	77
Some college	35%	11%	10%	15%	4%	5%	8%	13%	113
College graduate	29%	13%	11%	11%	9%	5%	6%	16%	141
Post-graduate	25%	19%	15%	4%	11%	2%	15%	8%	77
Attend services 1 or more/week	26%	20%	12%	15%	7%	2%	5%	14%	106
1-2 times a month	21%	14%	33%	14%	8%	0%	2%	7%	51
Less often	34%	15%	8%	8%	7%	4%	10%	13%	112
Never	40%	9%	7%	7%	7%	7%	11%	12%	135
North Country	45%	13%	9%	20%	0%	4%	3%	6%	30
Central / Lakes	34%	12%	14%	6%	12%	3%	9%	10%	73
Connecticut Valley	42%	9%	14%	12%	2%	2%	9%	12%	51
Mass Border	30%	15%	12%	6%	8%	5%	10%	13%	118
Seacoast	25%	18%	9%	10%	4%	7%	10%	17%	66
Manchester Area	27%	14%	12%	17%	11%	1%	4%	14%	71
First Cong. Dist	24%	19%	14%	12%	9%	4%	8%	11%	216
Second Cong. Dist	42%	9%	10%	9%	5%	3%	8%	14%	193

**Most Important To Your Vote In Presidential Primary?  
(Likely 2016 GOP Primary Voters)**

	<u>Jobs/ Economy</u>	<u>Health Care</u>	<u>Foreign Policy</u>	<u>Immi- gration</u>	<u>Taxes</u>	<u>Budget/ Debt</u>	<u>Gun Rights</u>	<u>Social Issues</u>	<u>Educ- ation</u>	<u>Other/ DK</u>	<u>(N=)</u>
<b>LIKELY NH GOP PRIMARY VOTERS</b>	<b>26%</b>	<b>4%</b>	<b>34%</b>	<b>11%</b>	<b>1%</b>	<b>3%</b>	<b>2%</b>	<b>1%</b>	<b>1%</b>	<b>16%</b>	<b>405</b>
Registered Undeclared	25%	6%	33%	15%	0%	4%	1%	1%	1%	15%	180
Registered Republican	28%	3%	35%	9%	2%	3%	2%	1%	1%	17%	221
Democrat	47%	5%	18%	0%	0%	0%	0%	2%	6%	22%	19
Independent	23%	3%	30%	14%	0%	6%	2%	0%	2%	20%	54
Republican	26%	4%	36%	11%	1%	3%	2%	1%	0%	14%	325
Liberal	20%	11%	47%	9%	0%	0%	0%	3%	0%	10%	15
Moderate	31%	4%	30%	5%	1%	3%	0%	1%	1%	24%	143
Conservative	26%	4%	37%	14%	1%	4%	3%	1%	0%	9%	220
Voted in 2008,2012 NH Primaries	25%	3%	38%	12%	1%	4%	1%	1%	0%	14%	293
Voted in 2008 or 2012 NH Primary	28%	9%	24%	15%	0%	5%	2%	0%	2%	15%	60
Did Not Vote in Either NH Primary	29%	5%	23%	4%	0%	0%	8%	0%	4%	27%	53
Union household	19%	0%	31%	24%	0%	5%	7%	1%	0%	12%	40
Non-union	27%	5%	35%	10%	1%	3%	1%	1%	1%	16%	361
Read Union Leader	25%	3%	43%	8%	0%	2%	3%	0%	0%	16%	91
Read Boston Globe	34%	0%	42%	2%	0%	0%	0%	0%	0%	21%	29
Read Local Newspapers	25%	5%	35%	10%	0%	2%	5%	0%	0%	18%	118
Watch WMUR	27%	5%	35%	11%	1%	4%	2%	1%	1%	15%	242
Listen to NHPR	29%	3%	34%	9%	2%	1%	1%	0%	0%	20%	85
Listen to Conserv. Talk Radio	22%	2%	36%	24%	3%	2%	3%	0%	0%	8%	83
18 to 34	23%	6%	26%	9%	5%	5%	5%	2%	3%	17%	85
35 to 49	23%	3%	32%	17%	0%	4%	1%	0%	1%	19%	102
50 to 64	32%	5%	35%	10%	0%	4%	1%	1%	0%	12%	139
65 and over	26%	3%	43%	6%	0%	2%	1%	0%	0%	19%	66
Male	30%	4%	33%	11%	1%	4%	1%	1%	1%	14%	216
Female	22%	5%	35%	12%	1%	3%	2%	1%	1%	18%	189
High school or less	25%	2%	36%	11%	2%	2%	4%	0%	0%	19%	77
Some college	21%	9%	29%	12%	0%	5%	3%	1%	2%	17%	112
College graduate	27%	3%	39%	12%	1%	1%	1%	1%	0%	14%	140
Post-graduate	35%	0%	30%	10%	2%	7%	0%	1%	2%	13%	74
Attend services 1 or more/week	29%	3%	32%	9%	0%	5%	3%	2%	0%	18%	103
1-2 times a month	34%	3%	40%	7%	3%	4%	5%	0%	0%	5%	49
Less often	18%	6%	40%	10%	1%	5%	1%	1%	2%	16%	112
Never	28%	4%	29%	17%	1%	1%	1%	0%	1%	18%	135
North Country	17%	1%	20%	15%	0%	10%	0%	6%	0%	31%	29
Central / Lakes	25%	9%	33%	7%	2%	3%	6%	1%	3%	11%	75
Connecticut Valley	17%	5%	40%	20%	0%	0%	3%	0%	0%	16%	49
Mass Border	31%	3%	38%	13%	1%	5%	1%	0%	0%	7%	117
Seacoast	28%	4%	36%	6%	0%	3%	0%	0%	0%	23%	66
Manchester Area	28%	1%	30%	12%	2%	1%	0%	2%	1%	22%	70
First Cong. Dist	28%	4%	35%	8%	1%	4%	1%	2%	1%	16%	217
Second Cong. Dist	24%	5%	33%	15%	1%	3%	2%	0%	1%	16%	188