



January 31, 2016

TRUMP MAINTAINS NH LEAD, CLOSE RACE FOR SECOND, MOST VOTERS STILL UNDECIDED

By: Andrew E. Smith, Ph.D.
Zachary S. Azem, M.A.
UNH Survey Center

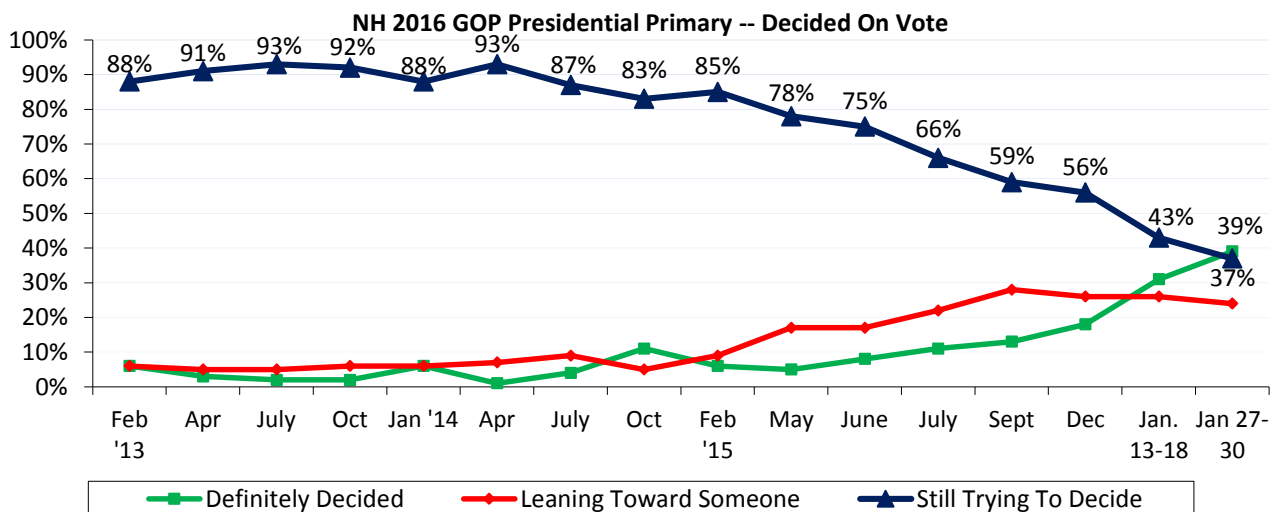
andrew.smith@unh.edu
603-862-2226
www.unh.edu/survey-center

DURHAM, NH – Donald Trump has maintained his double digit lead in the New Hampshire Primary race while the rest of the field remains tightly packed. However, Trump also continues to be the candidate that New Hampshire Republicans say they are least likely to vote for. Only thirty-nine percent of New Hampshire Republican Primary voters say they have firmly decided who they will vote for in the Primary.

These findings are based on the latest **CNN/WMUR New Hampshire Primary Poll**,* conducted by the University of New Hampshire Survey Center. Nine hundred and fourteen (914) randomly selected New Hampshire adults were interviewed by landline and cellular telephone between January 27 and January 30, 2016. The margin of sampling error is +/- 3.2 percent. Included were four hundred and nine (409) likely 2016 Republican Primary voters (MSE = +/-4.8) and three hundred and forty-seven (347) likely 2016 Democratic Primary voters (MSE = +/-5.3).

NH Republicans Still Undecided

New Hampshire primary voters usually decide who they will vote for in the last weeks, or days of the campaign and given the number of candidates in the 2016 field, it is no surprise that a majority of likely Republican primary voters have made up their minds about who they will vote for. Currently, only 39% of likely Republican Primary voters say they have definitely decided who they will support, 24% are leaning toward a candidate, and 37% are still trying to decide.



* We ask that this copyrighted information be referred to as *the CNN/WMUR New Hampshire Primary Poll*, sponsored by WMUR-TV and CNN, and conducted by the University of New Hampshire Survey Center.

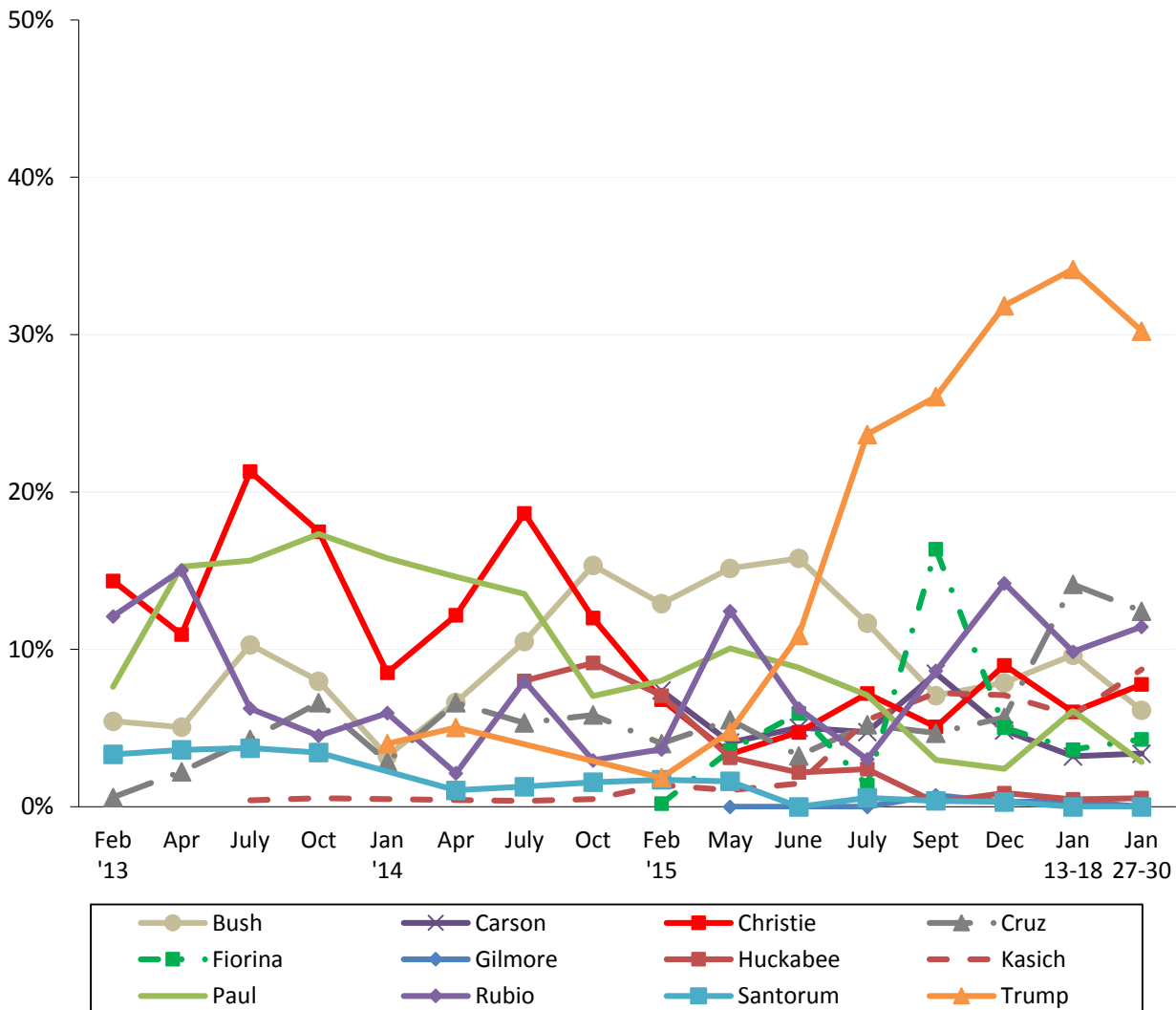
The Republican electorate is much more interested in the 2016 primary than it was at a similar point in the 2008 cycle, the last time both parties had contested primaries. Currently, 57% of likely Republican primary voters say they are extremely interested in the election, 32% are very interested, and 12% are only somewhat interested or not very interested. By comparison, in December 2007, only 40% of likely Republican primary voters said they were extremely interested in the 2008 primary, 46% were very interested, and 14% were only somewhat interested or not very interested. Currently, 47% of undeclared voters who can vote in either primary, say they will vote in the Republican primary while 42% say they will vote in the Democratic primary.

2016 NH Republican Primary

Donald Trump continues to top the field in New Hampshire with 30% of likely Republican primary voters supporting him. Trump is followed by Ted Cruz (12%), Marco Rubio (11%), John Kasich (9%), Chris Christie (8%), Jeb Bush (6%), Carly Fiorina (4%), Ben Carson (3%), Rand Paul (3%) and Mike Huckabee (1%). All other potential candidates receive less than 1% support, and 10% say they are undecided.

Trump (44%) and Cruz (22%) are the leading candidates among primary voters who regularly listen to conservative talk radio. Trump (24%), Rubio (13%) and Kasich (13%) are the top choices among primary voters who regularly read the Union Leader. Trump also has the support of 52% of likely primary voters who say they have “definitely decided” who they are voting for on primary day.

NH 2016 GOP Presidential Primary -- Who Support If Vote Held Today?

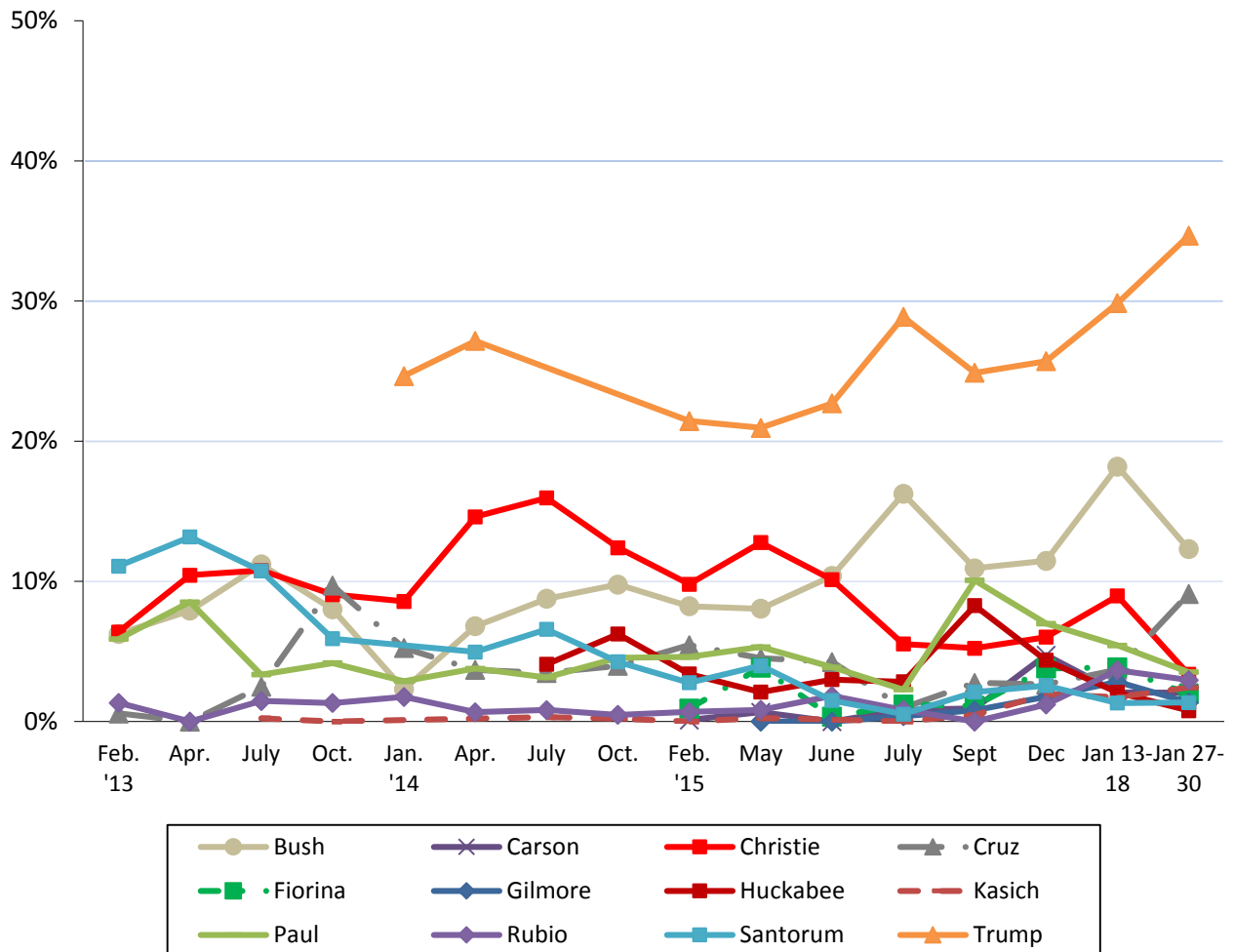


Most Unpopular Republican Candidate

Despite leading the New Hampshire field, Trump is also the candidate New Hampshire Republicans are least likely to vote for. When asked which candidate they would NOT vote for under any circumstance, 35% of likely Republican Primary voters say they would not vote for Trump, 12% would not vote for Bush, 9% would not vote for Cruz, 4% would not vote for Paul, 3% would not vote for Christie, 3% would not vote for Rubio, 2% would not vote for Kasich, 2% would not vote for Carson, 2% would not vote for Fiorina, 1% would not vote for Santorum, 1% would not vote for Gilmore, 1% would not vote for Huckabee, 14% think all the prospective candidates are acceptable, and 9% are unsure.

NHPR listeners (45%) are most likely to say they wouldn't vote for Trump under any circumstances and conservative talk radio listeners (32%) are most likely to say they wouldn't vote for Bush under any circumstances.

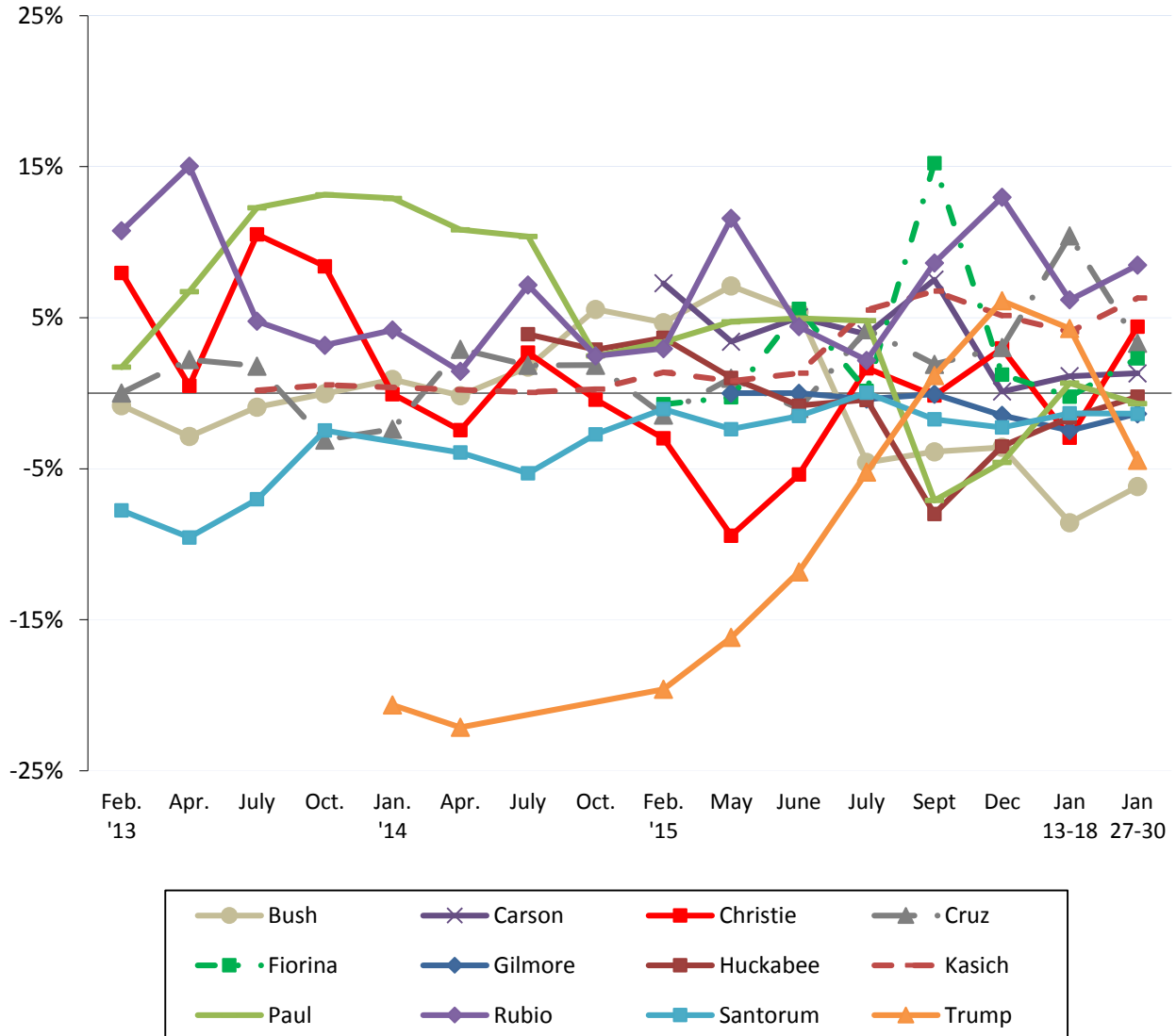
NH 2016 GOP Presidential Primary -- Would Not Vote For



Republican Net Electability

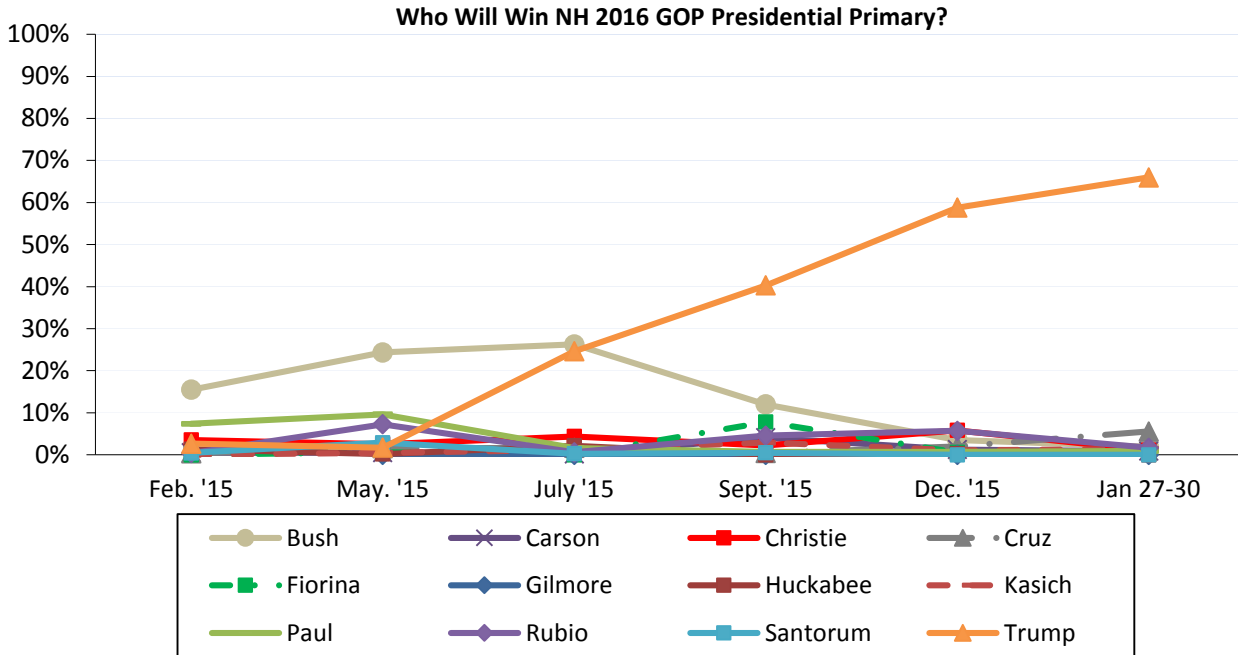
Rubio tops the field in net electability (the percentage who support a candidate minus the percent who would not vote for that candidate), with +8%. Kasich (+6%), Christie (+4%), Cruz (+3%), Fiorina (+2%) and Carson (+1%) all have positive net electability scores. Huckabee (+0%), Paul (-1%), Santorum (-1%), Gilmore (-1%), Trump (-5%) and Bush (-6%) have neutral or negative net electability scores.

NH 2016 GOP Presidential Primary -- Net Electability Scores



Who Will Win NH Primary?

Trump remains the candidate New Hampshire Republicans think will win in the Granite State. When asked who they think will win the 2016 New Hampshire Republican Primary, 66% think Trump will win, 6% think Cruz will win, 2% think Bush will win, and 2% think Rubio will win. The percentage believing Trump will win the primary has increased 7 percentage points since December.



CNN/WMUR New Hampshire Primary Poll Methodology

These findings are based on the latest CNN/WMUR New Hampshire Primary Poll, conducted by the University of New Hampshire Survey Center and funded by CNN and WMUR-TV, Manchester, NH. Interviews were conducted by the UNH Survey Center with assistance from the Center for Public Interest Polling in Eagleton Institute at Rutgers University. Nine hundred fourteen (914) randomly selected New Hampshire adults were interviewed by landline and cellular telephone between January 27 and January 30, 2016. If a household included more than one adult, the adult who had the most recent birthday was selected to be interviewed.

The margin of sampling error is +/- 3.2 percent for the entire sample. Included were four hundred nine (409) likely 2016 Republican Primary voters (MSE = +/-4.8 percentage points), and three hundred forty-seven (347) likely 2016 Democratic Primary voters (MSE = +/-4.8 percentage points). These MSE's have not been adjusted for design effect. The design effect for the survey is 1.1%.

The random sample used in the CNN/WMUR New Hampshire Primary Poll was purchased from Marketing Systems Group (MSG), Horsham, PA. MSG screens each selected telephone number to eliminate non-working numbers, disconnected numbers, and business numbers to improve the efficiency of the sample, reducing the amount of time interviewers spend calling non-usable numbers.

The data have been weighted to adjust for numbers of adults and telephone lines within households. Additionally, data were weighted by respondent sex, age, and region of the state to targets from the most recent American Community Survey (ACS) conducted by the U.S. Census Bureau. In addition to potential sampling error, all surveys have other potential sources of non-sampling error including question order effects, question wording effects, and non-response. Due to rounding, percentages may not sum to 100%. The number of respondents in each demographic below may not equal the number reported in cross-tabulation tables as some respondents choose not to answer some questions.

For more information about the methodology used in the CNN/WMUR New Hampshire Primary Poll, contact Dr. Andrew Smith at (603) 862-2226 or by email at andrew.smith@unh.edu.

New Hampshire Primary Poll, January 27-30, 2016 Demographics

Sex	N	%	Region	N	%
Male	447	49%	North Country	86	9%
Female	467	51%	Central/Lakes	155	17%
			Connecticut Valley	124	14%
			Mass Border	217	24%
Age	N	%	Seacoast	163	18%
18 to 34	230	27%	Manchester Area	169	19%
35 to 49	229	26%			
50 to 64	253	29%	Party Registration	N	%
65 and Over	155	18%	Democrat	202	22%
			Undeclared & Not Reg.	463	51%
Highest Level of Education	N	%	Republican	246	27%
High School or Less	143	18%			
Some College	178	23%	Party Identification	N	%
College Graduate	290	37%	Democrat	332	43%
Post-Graduate	173	22%	Independent	109	14%
			Republican	336	43%

New Hampshire Primary Poll, January 27-30, 2016 Likely Republican Primary Voter Demographics

Sex	N	%	Region	N	%
Male	229	56%	North Country	43	11%
Female	179	44%	Central/Lakes	70	17%
			Connecticut Valley	40	10%
Age	N	%	Mass Border	109	27%
18 to 34	74	19%	Seacoast	63	15%
35 to 49	109	28%	Manchester Area	84	21%
50 to 64	124	32%			
65 and Over	78	20%	Party Registration	N	%
			Democrat	0	0%
Highest Level of Education	N	%	Undeclared & Not Reg.	169	41%
High School or Less	87	22%	Republican	239	59%
Some College	93	23%			
College Graduate	148	37%	Party Identification	N	%
Post-Graduate	75	19%	Democrat	31	8%
			Independent	57	14%
			Republican	314	78%

Decided Who to Vote for in 2016 GOP Primary?

(Likely NH GOP Primary Voters)

“Have you definitely decided who you will vote for in the New Hampshire primary ... are you leaning toward someone ... or have you considered some candidates but are still trying to decide?”

	<u>Definitely Decided</u>	<u>Leaning Toward Someone</u>	<u>Still Trying to Decide</u>	<u>(N)</u>
Jan 27-30 '16	39%	24%	37%	(409)
Jan 13-18 '16	31%	26%	43%	(412)
Dec '15	18%	26%	56%	(403)
Sept '15	13%	28%	59%	(343)
July '15	11%	22%	66%	(309)
June '15	8%	17%	75%	(401)
May '15	5%	17%	78%	(291)
Feb. '15	6%	9%	85%	(346)
Oct. '14	11%	5%	83%	(271)
July '14	4%	9%	87%	(247)
Apr. '14	1%	7%	83%	(182)
Jan. '14	6%	6%	88%	(245)
Oct. '13	2%	6%	92%	(220)
July '13	2%	5%	93%	(197)
Apr. '13	3%	5%	91%	(164)
Feb. '13	6%	6%	88%	(205)

Republican Nomination in 2016 NH Primary

(Likely NH GOP Primary Voters)

"I'm going to read you the names of the candidates who are either running or considering running for the Republican nomination. If the Republican primary for president were held today, which of the following would you support for the Republican nomination Jeb Bush ... Ben Carson ... Chris Christie ... Ted Cruz ... Carly Fiorina ... Jim Gilmore ... Mike Huckabee ... John Kasich ... Rand Paul ... Marco Rubio ... Rick Santorum ... Donald Trump ... or someone else?" ROTATE CANDIDATES

	<u>2015</u>						<u>2016</u>	
	<u>Feb</u>	<u>May</u>	<u>June</u>	<u>July</u>	<u>Sept</u>	<u>Dec</u>	<u>Jan 13-18</u>	<u>Jan 27-30</u>
Donald Trump	2%	5%	11%	24%	26%	32%	34%	30%
Ted Cruz	4%	6%	3%	5%	5%	6%	14%	12%
Marco Rubio	5%	12%	6%	3%	9%	14%	10%	11%
John Kasich	1%	1%	1%	6%	7%	7%	6%	9%
Chris Christie	9%	3%	5%	7%	5%	9%	6%	8%
Jeb Bush	17%	15%	16%	12%	7%	8%	10%	6%
Carly Fiorina	*	4%	6%	1%	16%	5%	4%	4%
Ben Carson	8%	4%	5%	5%	8%	5%	3%	3%
Rand Paul	9%	10%	9%	7%	3%	2%	6%	3%
Mike Huckabee	9%	3%	2%	2%	*	1%	1%	1%
Jim Gilmore	---	0%	0%	0%	1%	*	*	0%
Rick Santorum	2%	2%	0%	1%	*	*	0%	0%
Lindsey Graham	---	1%	1%	1%	1%	1%	---	---
George Pataki	1%	2%	1%	*	*	0%	---	---
Scott Walker	12%	11%	8%	11%	*	---	---	---
Mark Everson	---	---	---	---	0%	---	---	---
Bobby Jindal	1%	2%	*	2%	0%	---	---	---
Rick Perry	2%	4%	4%	2%	---	---	---	---
Bob Ehrlich	---	*	*	0%	---	---	---	---
Peter King	*	*	0%	---	---	---	---	---
John Bolton	1%	0%	---	---	---	---	---	---
Paul Ryan	---	---	---	---	---	---	---	---
Kelly Ayotte	---	---	---	---	---	---	---	---
Scott Brown	---	---	---	---	---	---	---	---
Rob Portman	---	---	---	---	---	---	---	---
John Huntsman	---	---	---	---	---	---	---	---
John Thune	---	---	---	---	---	---	---	---
Someone Else	1%	1%	1%	0%	*	0%	*	3%
Don't Know Yet	15%	14%	21%	12%	11%	9%	6%	10%
(N)	(348)	(293)	(400)	(305)	(344)	(399)	(408)	(400)

* = Less than 1% --- = Not Included

	<u>2013</u>				<u>2014</u>			
	<u>Feb</u>	<u>Apr</u>	<u>July</u>	<u>Oct</u>	<u>Jan</u>	<u>Apr</u>	<u>July</u>	<u>Oct</u>
Donald Trump	---	---	---	---	4%	5%	---	---
Ted Cruz	1%	2%	4%	6%	3%	7%	5%	6%
Marco Rubio	12%	15%	6%	4%	6%	2%	8%	3%
John Kasich	---	---	*	*	---	---	*	*
Chris Christie	14%	11%	21%	16%	9%	12%	19%	12%
Jeb Bush	5%	5%	10%	8%	3%	7%	11%	15%
Carly Fiorina	---	---	---	---	---	---	---	---
Ben Carson	---	---	---	---	---	---	---	---
Rand Paul	8%	15%	16%	17%	16%	15%	14%	7%
Mike Huckabee	---	---	---	---	---	---	8%	9%
Jim Gilmore	---	---	---	---	---	---	---	---
Rick Santorum	3%	4%	4%	4%	---	1%	1%	2%
Lindsey Graham	---	---	---	---	---	---	---	---
George Pataki	---	---	---	---	---	---	---	---
Scott Walker	3%	1%	2%	2%	2%	3%	3%	3%
Mark Everson	---	---	---	---	---	---	---	---
Bobby Jindal	2%	2%	*	---	---	3%	5%	3%
Rick Perry	---	---	4%	1%	2%	1%	2%	2%
Bob Ehrlich	---	---	---	---	---	---	---	---
Peter King	---	---	---	*	*	---	---	---
John Bolton	---	---	---	---	---	---	---	---
Paul Ryan	11%	11%	8%	9%	6%	13%	5%	6%
Kelly Ayotte	10%	5%	---	---	13%	13%	---	---
Scott Brown	---	---	---	7%	11%	---	---	---
Rob Portman	0%	1%	*	*	*	*	1%	*
John Huntsman	8%	5%	---	---	---	---	---	---
John Thune	1%	*	---	---	---	---	---	---
Someone Else	2%	0%	3%	3%	6%	3%	3%	3%
Don't Know Yet	20%	23%	20%	21%	18%	15%	15%	28%
(N)	(209)	(167)	(199)	(233)	(244)	(186)	(245)	(274)

Candidate You Wouldn't Vote For In 2016 NH Republican Primary
(Likely NH GOP Primary Voters)

“Which of the candidates who are either running or considering running for the Republican nomination would you NOT vote for under any circumstance?”

	<u>2015</u>						<u>2016</u>	
	<u>Feb</u>	<u>May</u>	<u>June</u>	<u>July</u>	<u>Sept</u>	<u>Dec</u>	<u>Jan 13-18</u>	<u>Jan 27-30</u>
Donald Trump	21%	21%	23%	29%	25%	26%	30%	35%
Jeb Bush	8%	8%	10%	16%	11%	11%	18%	12%
Ted Cruz	5%	5%	4%	1%	3%	3%	4%	9%
Rand Paul	5%	5%	4%	2%	10%	7%	5%	4%
Chris Christie	10%	13%	10%	6%	5%	6%	9%	3%
Marco Rubio	1%	1%	2%	1%	0%	1%	4%	3%
John Kasich	0%	*	*	0%	*	2%	2%	2%
Ben Carson	*	1%	0%	1%	1%	5%	2%	2%
Carly Fiorina	1%	4%	*	1%	1%	4%	4%	2%
Rick Santorum	3%	4%	2%	1%	2%	3%	1%	1%
Jim Gilmore	---	0%	0%	*	1%	2%	3%	1%
Mike Huckabee	3%	2%	3%	3%	8%	4%	2%	1%
Lindsey Graham	---	2%	1%	4%	4%	3%	---	---
George Pataki	*	4%	2%	2%	2%	2%	---	---
Mark Everson	---	---	---	---	1%	---	---	---
Bobby Jindal	1%	1%	2%	*	1%	---	---	---
Scott Walker	*	1%	2%	*	*	---	---	---
Rick Perry	2%	1%	1%	2%	---	---	---	---
Bob Ehrlich	---	0%	*	0%	---	---	---	---
Peter King	1%	0%	1%	---	---	---	---	---
John Bolton	0%	1%	---	---	---	---	---	---
Mitt Romney	5%	---	---	---	---	---	---	---
Paul Ryan	---	---	---	---	---	---	---	---
Rob Portman	---	---	---	---	---	---	---	---
Kelly Ayotte	---	---	---	---	---	---	---	---
Scott Brown	---	---	---	---	---	---	---	---
John Huntsman	---	---	---	---	---	---	---	---
John Thune	---	---	---	---	---	---	---	---
Someone Else	1%	*	1%	1%	0%	1%	*	1%
All OK	11%	10%	13%	12%	10%	12%	10%	14%
Don't Know	22%	18%	19%	17%	15%	9%	6%	9%
(N)	(347)	(285)	(397)	(307)	(343)	(399)	(406)	(400)

	<u>2013</u>				<u>2014</u>			
	<u>Feb</u>	<u>Apr</u>	<u>July</u>	<u>Oct</u>	<u>Jan</u>	<u>Apr</u>	<u>July</u>	<u>Oct</u>
Donald Trump	---	---	---	---	25%	27%	---	---
Jeb Bush	6%	8%	11%	8%	2%	7%	9%	10%
Ted Cruz	1%	*	3%	8%	5%	4%	3%	4%
Rand Paul	6%	9%	3%	5%	3%	4%	3%	5%
Chris Christie	6%	11%	11%	7%	9%	15%	16%	12%
Marco Rubio	1%	*	2%	2%	2%	1%	1%	*
John Kasich	---	---	*	0%	---	---	*	*
Ben Carson	---	---	---	---	---	---	---	---
Carly Fiorina	---	---	---	---	---	---	---	---
Rick Santorum	11%	13%	11%	6%	---	5%	7%	4%
Jim Gilmore	---	---	---	---	---	---	---	---
Mike Huckabee	---	---	---	---	---	---	4%	6%
Lindsey Graham	---	---	---	---	---	---	---	---
George Pataki	---	---	---	---	---	---	---	---
Mark Everson	---	---	---	---	---	---	---	---
Bobby Jindal	2%	*	1%	---	---	*	1%	1%
Scott Walker	2%	*	0%	*	*	0%	3%	*
Rick Perry	---	---	5%	6%	2%	3%	7%	4%
Bob Ehrlich	---	---	---	---	---	---	---	---
Peter King	---	---	---	5%	1%	---	---	---
John Bolton	---	---	---	---	---	---	---	---
Mitt Romney	---	---	---	---	---	---	---	---
Paul Ryan	2%	*	*	1%	*	0%	1%	0%
Rob Portman	3%	1%	1%	*	*	0%	*	1%
Kelly Ayotte	6%	6%	---	---	5%	4%	---	---
Scott Brown	---	---	---	2%	5%	---	---	---
John Huntsman	4%	6%	---	---	---	---	---	---
John Thune	1%	*	---	---	---	---	---	---
Someone Else	2%	*	*	1%	*	2%	*	*
All OK	15%	24%	25%	20%	21%	16%	23%	17%
Don't Know	32%	21%	25%	28%	19%	14%	21%	34%
(N)	(208)	(168)	(197)	(232)	(243)	(185)	(243)	(271)

Who Will Win 2016 NH Republican Primary?
(Likely NH GOP Primary Voters)

“Regardless of who you are voting for, which candidate do you think is most likely to win the New Hampshire Republican primary?”

	<u>Feb. '15</u>	<u>May '15</u>	<u>July '15</u>	<u>Sept '15</u>	<u>Dec '15</u>	<u>Jan 27-30</u>
Donald Trump	3%	2%	25%	40%	59%	66%
Ted Cruz	*	2%	2%	*	2%	6%
Jeb Bush	15%	24%	26%	12%	4%	2%
Marco Rubio	*	7%	1%	5%	6%	2%
John Kasich	0%	1%	1%	3%	1%	1%
Chris Christie	4%	3%	4%	2%	6%	1%
Rand Paul	7%	10%	2%	1%	1%	1%
Ben Carson	1%	1%	*	4%	1%	1%
Carly Fiorina	0%	1%	0%	8%	1%	*
Mike Huckabee	1%	*	2%	0%	*	0%
Rick Santorum	1%	3%	*	1%	0%	0%
Jim Gilmore	---	0%	0%	0%	0%	0%
George Pataki	0%	*	0%	0%	0%	---
Lindsey Graham	---	0%	0%	0%	0%	---
Scott Walker	3%	7%	8%	*	---	---
Bobby Jindal	1%	0%	1%	0%	---	---
Mark Everson	---	---	---	0%	---	---
Rick Perry	2%	2%	*	---	--	---
Bob Ehrlich	---	0%	0%	---	---	---
John Bolton	*	*	---	---	---	---
Peter King	0%	*	---	---	---	---
Mitt Romney	22%	---	---	---	---	---
Someone Else	*	0%	0%	0%	0%	1%
Don't Know	40%	38%	28%	24%	20%	19%
(N)	(347)	(289)	(309)	(344)	(403)	(405)

**Decided 2016 GOP Primary Vote
(Likely 2016 GOP Primary Voters)**

	Def. <u>Decided</u>	Leaning <u>Towards Someone</u>	Still Trying <u>To Decide</u>	(N)
LIKELY NH GOP PRIMARY VOTERS	39%	24%	37%	409
Registered Undeclared	38%	21%	41%	154
Registered Republican	39%	27%	34%	239
Democrat/Independent	47%	17%	36%	88
Republican	35%	26%	38%	314
Liberal/Moderate	35%	22%	43%	174
Conservative	42%	27%	31%	210
Extremely Interested	43%	25%	33%	232
Very Interested	37%	27%	35%	129
Somewhat/Not Very Interested	26%	12%	63%	48
Voted in 2008,2012 NH Primaries	38%	26%	35%	273
Voted in 2008 or 2012 NH Primary	47%	14%	39%	58
Did Not Vote in Either NH Primary	34%	23%	43%	79
Will Definitely Vote	42%	24%	34%	335
Will Vote Unless Emergency	25%	23%	53%	73
Read Union Leader	43%	26%	31%	115
Read Boston Globe	39%	22%	39%	42
Read Local Newspapers	37%	24%	39%	112
Watch WMUR	40%	26%	34%	258
Listen to NHPR	41%	17%	42%	87
Listen to Conserv. Talk Radio	61%	19%	20%	83
18 to 34	35%	22%	43%	74
35 to 49	42%	17%	41%	109
50 to 64	36%	28%	36%	124
65 and over	40%	28%	32%	78
Male	42%	22%	36%	229
Female	35%	26%	39%	179
High school or less	44%	25%	32%	87
Some college	30%	23%	47%	93
College graduate	37%	29%	34%	148
Post-graduate	49%	17%	34%	75
Attend services 1 or more/week	34%	29%	37%	124
1-2 times a month	41%	19%	40%	61
Less often	37%	27%	36%	107
Never	42%	20%	38%	108
North Country	50%	20%	30%	43
Central / Lakes	36%	27%	38%	70
Connecticut Valley	39%	36%	25%	40
Mass Border	26%	27%	46%	109
Seacoast	46%	22%	32%	63
Manchester Area	47%	15%	38%	84
First Cong. Dist	43%	19%	38%	211
Second Cong. Dist	35%	29%	36%	198

**GOP 2016 Primary Support
(Likely 2016 GOP Primary Voters)**

	<u>Donald Trump</u>	<u>Ted Cruz</u>	<u>Marco Rubio</u>	<u>John Kasich</u>	<u>Chris Christie</u>	<u>Jeb Bush</u>	<u>Carly Fiorina</u>	<u>Someone Else</u>	<u>Undecided</u>	<u>(N=)</u>
LIKELY NH GOP PRIMARY VOTERS	30%	12%	11%	9%	8%	6%	4%	9%	10%	400
Registered Undeclared	27%	13%	9%	11%	10%	7%	4%	10%	8%	151
Registered Republican	31%	11%	14%	8%	7%	6%	5%	9%	10%	234
Democrat/Independent	30%	7%	6%	12%	12%	6%	4%	9%	13%	87
Republican	30%	14%	13%	8%	7%	6%	4%	9%	9%	308
Liberal/Moderate	26%	2%	11%	15%	10%	9%	4%	14%	10%	170
Conservative	34%	21%	13%	4%	6%	4%	5%	6%	7%	207
Extremely Interested	31%	12%	11%	10%	11%	7%	4%	7%	6%	230
Very Interested	28%	14%	13%	8%	3%	7%	6%	10%	10%	126
Somewhat/Not Very Interested	31%	11%	7%	2%	4%	2%	0%	18%	25%	44
Voted in 2008,2012 NH Primaries	29%	13%	13%	10%	8%	6%	4%	8%	9%	268
Voted in 2008 or 2012 NH Primary	32%	5%	8%	8%	4%	7%	4%	24%	7%	54
Did Not Vote in Either NH Primary	33%	17%	9%	5%	9%	6%	4%	3%	14%	78
Definitely Decided	52%	12%	4%	12%	4%	2%	3%	10%	1%	155
Leaning Towards Someone	22%	14%	20%	8%	8%	5%	6%	10%	6%	97
Still Trying to Decide	13%	12%	14%	6%	11%	11%	5%	8%	21%	148
Will Definitely Vote	31%	12%	11%	10%	8%	6%	4%	10%	7%	331
Will Vote Unless Emergency	26%	14%	12%	4%	5%	6%	3%	8%	21%	70
Read Union Leader	24%	9%	13%	13%	11%	5%	5%	10%	9%	113
Read Boston Globe	29%	3%	14%	11%	12%	2%	8%	17%	3%	40
Read Local Newspapers	31%	8%	17%	12%	4%	8%	4%	8%	7%	110
Watch WMUR	34%	10%	13%	9%	7%	7%	5%	7%	9%	254
Listen to NHPR	22%	6%	9%	15%	5%	8%	7%	13%	13%	85
Listen to Conserv. Talk Radio	44%	22%	12%	1%	4%	2%	5%	4%	5%	83
18 to 34	24%	12%	16%	2%	10%	2%	2%	22%	9%	74
35 to 49	31%	17%	7%	12%	2%	9%	4%	6%	12%	104
50 to 64	35%	11%	12%	7%	10%	5%	4%	8%	7%	123
65 and over	24%	11%	14%	13%	11%	7%	6%	5%	9%	76
Male	35%	13%	10%	8%	6%	5%	4%	9%	11%	224
Female	24%	12%	14%	10%	10%	7%	5%	10%	8%	176
High school or less	38%	19%	11%	5%	3%	6%	2%	8%	9%	86
Some college	28%	13%	12%	7%	9%	6%	2%	12%	11%	92
College graduate	30%	8%	11%	8%	9%	7%	6%	11%	10%	147
Post-graduate	24%	13%	11%	16%	10%	4%	8%	5%	9%	72
Attend services 1 or more/week	16%	21%	13%	12%	5%	6%	5%	12%	9%	121
1-2 times a month	42%	9%	8%	6%	16%	6%	1%	7%	4%	59
Less often	33%	11%	13%	7%	7%	4%	6%	6%	14%	105
Never	36%	6%	11%	9%	6%	8%	3%	11%	10%	108
North Country	28%	6%	10%	15%	7%	8%	5%	13%	7%	43
Central / Lakes	23%	11%	13%	12%	3%	7%	8%	9%	14%	67
Connecticut Valley	43%	13%	8%	9%	8%	5%	4%	5%	4%	39
Mass Border	26%	16%	15%	4%	7%	7%	6%	9%	11%	108
Seacoast	39%	11%	12%	10%	11%	6%	0%	7%	3%	62
Manchester Area	30%	13%	7%	8%	11%	3%	3%	12%	13%	82
First Cong. Dist	31%	11%	12%	10%	9%	4%	3%	10%	10%	208
Second Cong. Dist	29%	14%	10%	8%	6%	8%	5%	9%	10%	192

**GOP 2016 Primary – Would NOT Support
(Likely 2016 GOP Primary Voters)**

	Donald <u>Trump</u>	Jeb <u>Bush</u>	Ted <u>Cruz</u>	Rand <u>Paul</u>	Chris <u>Christie</u>	Someone <u>Else</u>	All <u>Acceptable</u>	Don't <u>Know</u>	(N=)
LIKELY NH GOP PRIMARY VOTERS	35%	12%	9%	4%	3%	14%	14%	9%	400
Registered Undeclared	42%	11%	8%	3%	4%	12%	11%	10%	150
Registered Republican	32%	14%	8%	4%	3%	16%	16%	6%	234
Democrat/Independent	45%	14%	8%	1%	3%	8%	15%	7%	85
Republican	32%	12%	10%	4%	3%	16%	14%	9%	310
Liberal/Moderate	47%	6%	13%	3%	3%	14%	7%	7%	172
Conservative	26%	19%	6%	3%	4%	14%	20%	8%	204
Extremely Interested	33%	13%	7%	4%	2%	16%	18%	7%	228
Very Interested	37%	13%	13%	4%	6%	12%	9%	6%	124
Somewhat/Not Very Interested	39%	7%	10%	0%	0%	11%	11%	21%	48
Voted in 2008,2012 NH Primaries	34%	13%	7%	5%	4%	15%	16%	7%	267
Voted in 2008 or 2012 NH Primary	43%	12%	9%	0%	2%	12%	12%	10%	57
Did Not Vote in Either NH Primary	30%	12%	17%	3%	3%	13%	9%	13%	77
Definitely Decided	24%	24%	10%	2%	2%	13%	16%	8%	152
Leaning Towards Someone	39%	8%	7%	5%	5%	13%	18%	5%	97
Still Trying to Decide	43%	3%	9%	4%	4%	16%	10%	11%	151
Will Definitely Vote	34%	14%	9%	4%	4%	14%	14%	8%	330
Will Vote Unless Emergency	39%	6%	9%	1%	0%	17%	15%	12%	70
Read Union Leader	41%	9%	4%	4%	1%	14%	21%	6%	113
Read Boston Globe	53%	10%	8%	0%	0%	8%	18%	3%	40
Read Local Newspapers	36%	10%	12%	4%	4%	14%	12%	8%	110
Watch WMUR	32%	14%	9%	4%	4%	15%	15%	6%	254
Listen to NHPR	45%	12%	5%	5%	0%	12%	7%	13%	86
Listen to Conserv. Talk Radio	10%	32%	4%	5%	1%	16%	23%	9%	81
18 to 34	44%	9%	15%	0%	4%	14%	4%	10%	74
35 to 49	31%	18%	6%	4%	3%	8%	18%	11%	104
50 to 64	31%	13%	10%	3%	5%	20%	14%	6%	123
65 and over	39%	7%	10%	7%	1%	13%	18%	5%	78
Male	29%	17%	7%	3%	3%	16%	17%	8%	225
Female	42%	7%	11%	4%	4%	12%	11%	10%	176
High school or less	28%	14%	9%	5%	4%	12%	18%	11%	86
Some college	33%	8%	11%	2%	4%	18%	10%	13%	93
College graduate	34%	13%	10%	4%	4%	13%	15%	7%	145
Post-graduate	46%	15%	7%	3%	1%	14%	12%	2%	72
Attend services 1 or more/week	41%	10%	5%	5%	4%	9%	17%	8%	122
1-2 times a month	26%	21%	14%	1%	6%	13%	9%	11%	60
Less often	34%	12%	9%	3%	3%	15%	20%	5%	105
Never	35%	11%	12%	3%	2%	19%	9%	8%	105
North Country	41%	6%	18%	4%	3%	5%	17%	7%	42
Central / Lakes	27%	8%	13%	0%	3%	18%	18%	13%	67
Connecticut Valley	34%	20%	12%	2%	1%	9%	10%	12%	40
Mass Border	39%	10%	8%	4%	7%	11%	14%	7%	109
Seacoast	35%	18%	5%	5%	3%	20%	11%	4%	60
Manchester Area	32%	15%	4%	6%	0%	18%	16%	9%	82
First Cong. Dist	35%	14%	7%	5%	1%	16%	13%	8%	205
Second Cong. Dist	34%	10%	11%	2%	6%	12%	16%	9%	195

**Who will win NH Republican Primary?
(Likely 2016 GOP Primary Voters)**

	Donald <u>Trump</u>	Ted <u>Cruz</u>	Marco <u>Rubio</u>	Jeb <u>Bush</u>	John <u>Kasich</u>	Chris <u>Christie</u>	Someone <u>Else</u>	Don't <u>Know</u>	(N=)
LIKELY NH GOP PRIMARY VOTERS	66%	6%	2%	2%	1%	1%	3%	19%	405
Registered Undeclared	65%	5%	1%	1%	1%	1%	4%	21%	150
Registered Republican	68%	6%	2%	2%	2%	1%	3%	16%	239
Democrat/Independent	64%	7%	0%	0%	2%	2%	5%	20%	86
Republican	67%	5%	2%	2%	1%	1%	3%	19%	314
Liberal/Moderate	66%	4%	2%	2%	2%	0%	5%	19%	174
Conservative	66%	7%	2%	1%	1%	2%	2%	19%	207
Extremely Interested	71%	5%	1%	2%	1%	2%	2%	16%	231
Very Interested	65%	8%	5%	2%	1%	0%	4%	15%	127
Somewhat/Not Very Interested	43%	2%	1%	0%	2%	0%	8%	45%	48
Voted in 2008,2012 NH Primaries	70%	6%	2%	2%	2%	1%	1%	15%	270
Voted in 2008 or 2012 NH Primary	55%	3%	1%	2%	0%	2%	11%	27%	58
Did Not Vote in Either NH Primary	59%	5%	2%	0%	0%	0%	5%	28%	78
Definitely Decided	74%	6%	2%	0%	2%	2%	2%	11%	157
Leaning Towards Someone	69%	8%	2%	3%	0%	0%	3%	16%	97
Still Trying to Decide	55%	3%	2%	3%	2%	1%	5%	29%	152
Will Definitely Vote	68%	6%	2%	2%	1%	1%	3%	16%	332
Will Vote Unless Emergency	57%	4%	0%	0%	1%	0%	4%	34%	73
Read Union Leader	64%	7%	1%	3%	2%	4%	3%	17%	113
Read Boston Globe	64%	2%	0%	5%	2%	4%	8%	16%	40
Read Local Newspapers	67%	5%	2%	3%	0%	1%	2%	19%	111
Watch WMUR	71%	6%	3%	2%	1%	1%	3%	14%	257
Listen to NHPR	60%	6%	2%	1%	0%	0%	6%	25%	87
Listen to Conserv. Talk Radio	78%	6%	2%	0%	1%	2%	1%	11%	83
18 to 34	49%	2%	2%	5%	0%	0%	11%	31%	73
35 to 49	66%	6%	4%	1%	3%	0%	3%	18%	109
50 to 64	72%	7%	1%	1%	2%	3%	1%	15%	124
65 and over	70%	6%	2%	2%	1%	1%	1%	17%	78
Male	72%	5%	2%	1%	2%	0%	4%	14%	228
Female	59%	6%	2%	3%	1%	2%	3%	25%	177
High school or less	73%	3%	1%	2%	1%	1%	3%	17%	87
Some college	68%	5%	0%	0%	0%	1%	7%	19%	93
College graduate	65%	7%	3%	2%	1%	1%	3%	18%	148
Post-graduate	58%	7%	4%	1%	4%	1%	0%	24%	72
Attend services 1 or more/week	50%	11%	3%	3%	2%	3%	5%	24%	123
1-2 times a month	66%	2%	0%	0%	1%	2%	2%	27%	61
Less often	78%	3%	2%	1%	1%	0%	0%	14%	105
Never	71%	3%	1%	2%	2%	0%	6%	14%	108
North Country	55%	5%	0%	4%	1%	0%	8%	27%	43
Central / Lakes	64%	7%	2%	1%	2%	2%	5%	18%	70
Connecticut Valley	67%	10%	2%	0%	0%	0%	2%	19%	40
Mass Border	69%	7%	2%	2%	1%	0%	4%	15%	108
Seacoast	69%	5%	0%	3%	3%	0%	0%	20%	62
Manchester Area	67%	1%	4%	0%	1%	3%	2%	21%	82
First Cong. Dist	65%	6%	2%	2%	2%	1%	2%	21%	209
Second Cong. Dist	67%	5%	2%	1%	1%	1%	5%	17%	196