

Bass clef instruments

67.
VAN HUSEN / BURKE

BUT BEAUTIFUL

Handwritten musical score for bass clef instruments (Bass and Baritone) of the song "But Beautiful" by Van Housen/Burke. The score is written on six staves in G major (one sharp) and 4/4 time. The notation includes various chords and melodic lines with slurs and ties.

Chords and notation visible in the score:

- Staff 1: G^b, B^ø7, E7^{b9}, A^{mi}7
- Staff 2: C[#]7, F[#]7^{b9}, G^b, B^ø7, E7, A7
- Staff 3: D7, B^{mi}7, E^{mi}7, A^{mi}7, D7, G^b
- Staff 4: E^{mi} / E^{mi}(A7) E^{mi} A7, A^{mi}7/2, D7
- Staff 5: 2. A7, D7, B^{mi}7, E^{mi}7
- Staff 6: C^{mi}7 / F[#]7, B7, E^{mi}7, F7, B^{mi}7, E7, A^{mi}7, D7
- Staff 7: G^b, (A^{mi}7 D7)

BILLIE HOLIDAY - "LADY IN SATIN"

FREDDIE HUBBARD - "GETTING IT TOGETHER"

Bb instruments

BUT BEAUTIFUL

-VAN HAEVEN / BURKE

67.

Handwritten musical score for Bb instruments. The score is written on ten staves. The key signature is one sharp (F#), and the time signature is 4/4. The melody is written on the top staff, and the accompaniment is written on the bottom staff. The score includes various chords and musical notations. The chords are: A6, C#-7(b5), F#7(b9), B-7, D#-7(b5), G#7(b9), A6, C#-7(b5), F#7, B7, E7, C#-7, F#-7, B-7, E7, A6, F# / F#Δ, F#-7, B7, B-7/E, E7, B7, E7, C#-7, F#-, DΔ, G#7(b5), C#7, F#-7, G7, C#-7, F#7, B-7, E7, A6, {B-7 E7}, and a final double bar line.

Fine

Billie Holiday - "LADY IN SATIN"

FREDDIE HUBBARD - "GETTING IT TOGETHER"

C instruments

BUT BEAUTIFUL

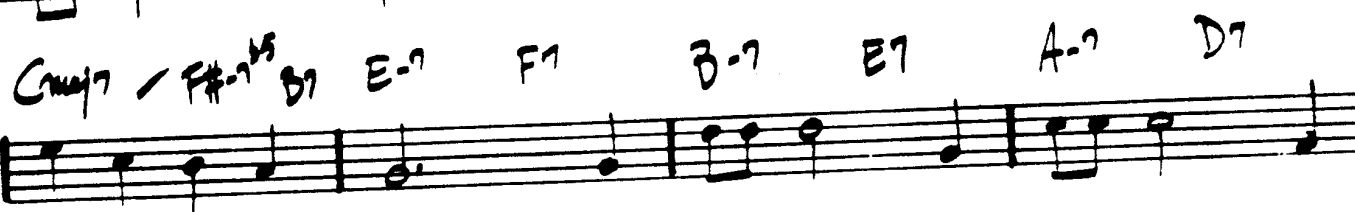
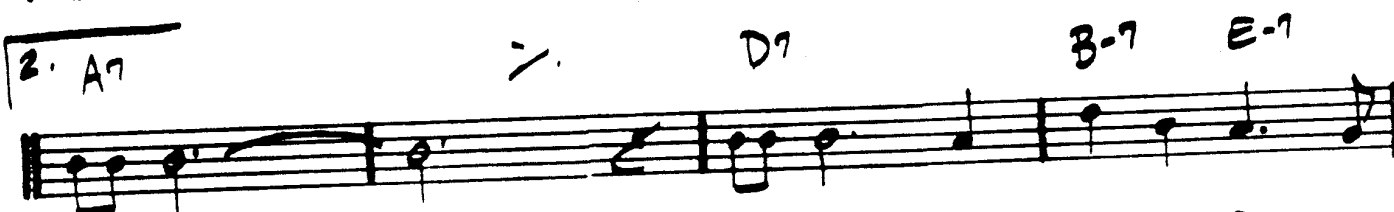
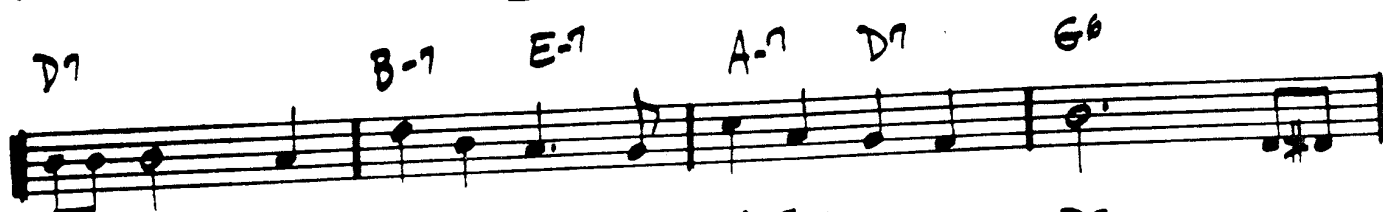
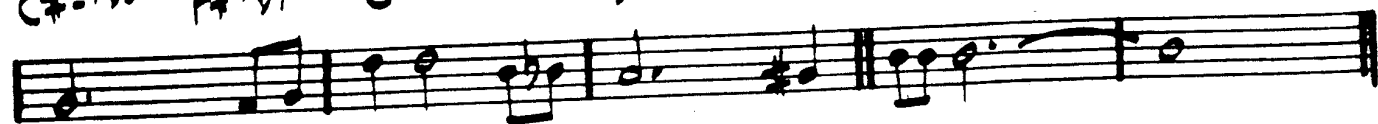
- VAN HEUSEN / BURKE

67.

G6

B-7b5 E7b9

A-7



FINE

BILLIE HOLIDAY - "LADY IN SATIN"

FREDDIE HUBBARD - "GETTING IT TOGETHER"

E♭ instruments

BUT BEAUTIFUL

67.

- VAN HEUSEN / BURKE

Handwritten musical score for E♭ instruments, titled "BUT BEAUTIFUL" by Van Heusen/Burke. The score is in G major (one sharp) and 4/4 time. It consists of seven staves of music with various chord annotations above the notes. The chords include E6, G#-7b5, C#7b9, F#-7, A#-7b5, D#7b9, B7, C#-7, C#(M7), F#7, F#-7/B, B7, 2. F#7, B7, G#-7, C#-7, A#M7, D#-7b5, G#7, C#-7, D7, G#-7, C#7, F#-7, B7, E6, and (F#-7 B7). The score ends with a double bar line and the word "FINE" below it.

GILLIE HOLIDAY - "LADY IN SATIN"

FREDDIE HUBBARD - "GETTING IT TOGETHER"

Bass clef instruments

JOY SPRING ^{247.} CLIFFORD BROWN

(Key signature: 2 flats)

Handwritten musical score for bass clef instruments (Bass and Tuba/Euphonium). The score is titled "JOY SPRING" and is attributed to Clifford Brown. The key signature is 2 flats (B-flat and E-flat). The time signature is 4/4. The score consists of eight staves of music, with various chords and triplets indicated. The notation includes eighth and sixteenth notes, rests, and bar lines. The chords are written above the notes, and triplets are indicated by a "3" in a circle. The score ends with a double bar line and a repeat sign.

Chords and triplets indicated in the score:

- Staff 1: F#m7, Gm7, C7, F#m7, Bbm7, Eb7
- Staff 2: Am7, Ab7, Gm7, C7, F, Abm7, Db7
- Staff 3: Gbmaj7, Abm7, Db7, Gbmaj7, Bbm7, E7
- Staff 4: Bbm7, A7, Abm7, Db7, Gb, Am7, D7
- Staff 5: Gbmaj7, Gm7, C7, F#m7, Fm7, Bb7
- Staff 6: Ebmaj7, Abm7, Db7, Gbmaj7, Gm7, C7
- Staff 7: F#m7, Gm7, C7, F#m7, Bbm7, Eb7
- Staff 8: Am7, Ab7, Gm7, C7, F, (Gm7 C7)

Bb instruments

247.

JOY SPRING

- CHORUS BY

Handwritten musical score for Bb instruments, titled "JOY SPRING". The score consists of ten staves of music in 4/4 time, featuring various chords and melodic lines. The key signature is one flat (Bb). The chords and notes are as follows:

- Staff 1: GΔ7, A-7, D7, GΔ7, C-7, F7
- Staff 2: B-7, Bb7, A-7, D7, G, Bb-7, Eb7
- Staff 3: AbΔ7, Bb-7, Eb7, AbΔ7, C#-7, F#7
- Staff 4: C#-7, B7, Bb-7, Eb7, Ab, B-7, E7
- Staff 5: AΔ7, A-7, D7, G7, G-7, C7
- Staff 6: FΔ7, Bb-7, Eb7, AbΔ7, A-7, D7
- Staff 7: GΔ7, A-7, D7, GΔ7, C-7, F7
- Staff 8: B-7, Bb7, A-7, D7, G, (A-7 D7)

C instruments

247.

(J=160)

JOY SPRING

— CLIFFORD BROWN

Handwritten musical score for C instruments, featuring a key signature of one flat (Bb) and a tempo marking of J=160. The score is written on a grand staff (treble and bass clefs) and includes a series of chords and melodic lines. The chords are written above the staff, and the melodic lines are written below the staff. The score is divided into measures by vertical bar lines. The key signature is indicated by two flats (Bb and Eb) in the key signature line.

Chords and melodic lines are written across the staff. The chords are: Fmaj7, G-7, C7, Fmaj7, Bb-7, Eb7, A-7, Ab7, G-7, C7, F, Ab-7, Db7, Gbmaj7, Ab-7, Db7, Gbmaj7, B-7, E7, B-7, A7, Ab-7, Db7, Gb, A-7, D7, Gbmaj7, G-7, C7, Fmaj7, F-7, Bb7, Ebmaj7, Ab-7, Db7, Gbmaj7, G-7, C7, Fmaj7, G-7, C7, Fmaj7, Bb-7, Eb7, A-7, Ab7, G-7, C7, F, (G-7 C7).

The melodic lines are written in a 4/4 time signature. The score ends with the word "FINE".

E♭ instruments

JOY SPRING

247.

(♩ = 166)

-CLIFFORD BROWN

Handwritten musical score for Eb instruments of the song "Joy Spring" by Clifford Brown. The score consists of eight staves of music in treble clef with a key signature of one sharp (F#). The tempo is marked as quarter note = 166. The music features complex rhythmic patterns, including triplets and sixteenth notes, and is heavily annotated with handwritten chord symbols and fingerings. The chords include D major 7, E minor 7, A7, D major 9, G minor 7, C7, F# minor 7, F7, E minor 7, A7, D, F minor 7, Bb7, Eb major 7, F minor 7, Bb7, Eb major 7, G# minor 7, C#7, G# minor 7, F#7, F minor 7, Bb7, Eb, F# minor 7, B7, E minor 7, A7, D major 9, D minor 7, G7, C major 7, F minor 7, Bb7, Eb major 7, E minor 7, A7, D major 9, E minor 7, A7, D major 9, G minor 7, C7, F# minor 7, F7, E minor 7, A7, D, and (E minor 7, A7). The score ends with the word "FINE".